



## New ConTex Container Ship Time Charter Assessment Index

New ConTex*		305	
16.02.17		12 mos	24 mos
Geared	1100 TEU	\$6.197	n.a.
	1700 TEU	\$6.628	
	2500 TEU	\$6.137	
Gearless	2700 TEU	\$6.304	\$7.210
	3500 TEU	\$5.599	\$6.750
	4250 TEU	\$4.352	\$6.493

Legend		
↑	up	+ 2% or more
↗	steady up	from +1% to +1,9%
→	steady	+/- 1 %
↘	steady down	from -1% to -1,9%
↓	down	- 2% or less

\*New ConTex evaluation is EXCLUDING  
2500/2700/3500/4250 TEU groups for  
12 months period

### New ConTex-Commentary - issued:

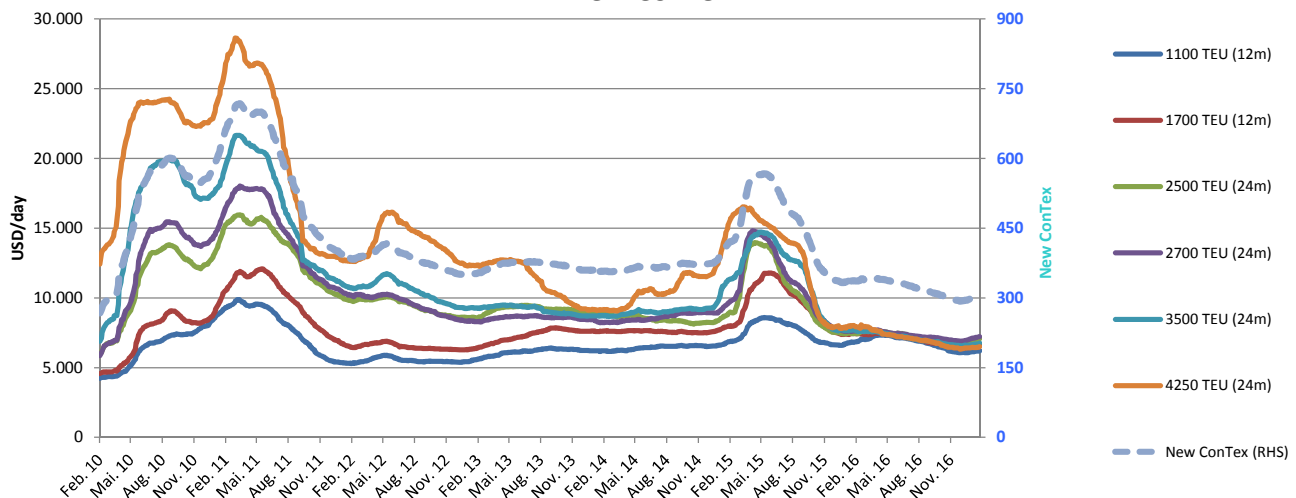
16.02.17

The New ConTex Index increased again this week – this time by two points bringing it to 305. This week the largest gain was made by the 3500 sector (12 months) which increased 1.8% week-on-week, reflecting the tightening availability of this size in the market. This increase was closely followed by the 2500 sector (12 months) which increased by USD 100, a 1.7% increase week-on-week. There was also further improvement in the 4250 sector on both the 12 and 24 month periods, highlighting Owners resistance to continue fixing at historically low rates. Bar the 1700 (12 months) which dropped 0.1%, all sectors increased by between 0.3 – 1.8%, giving some indication that the market might improve post-Chinese New Year. With the restructuring of the alliances also happening, one expects activity to increase in the coming weeks and months.

### New ConTex Development

Vessel type		Evaluated Period	Today	Week-on-Week			Month-on-Month			Year-on-Year		
			16.02.17	09.02.17	Change	Change	17.01.17	Change	Change	16.02.16	Change	Change
New ConTex*			305	303	2	↗ 0,7%	297	8	2,7%	337	-32	-9,5%
New ConTex	1100 TEU	12 mos	\$6.197	\$6.178	\$19	↗ 0,3%	\$6.089	\$108	1,8%	\$6.822	-625	-9,2%
	1700 TEU		\$6.628	\$6.637	-\$9	↘ -0,1%	\$6.467	\$161	2,5%	\$7.480	-852	-11,4%
	2500 TEU	24 mos	\$7.070	\$6.944	\$126	↗ 1,8%	\$6.745	\$325	4,8%	\$7.432	-362	-4,9%
	2700 TEU		\$7.210	\$7.166	\$44	↗ 0,6%	\$7.034	\$176	2,5%	\$7.622	-412	-5,4%
	3500 TEU		\$6.750	\$6.679	\$71	↗ 1,1%	\$6.596	\$154	2,3%	\$7.690	-940	-12,2%
	4250 TEU		\$6.493	\$6.453	\$40	↗ 0,6%	\$6.415	\$78	1,2%	\$8.013	-1.520	-19,0%
	2500 TEU	12 mos	\$6.137	\$6.037	\$100	↗ 1,7%	\$5.786	\$351	6,1%	\$6.057	80	1,3%
	2700 TEU		\$6.304	\$6.286	\$18	↗ 0,3%	\$6.123	\$181	3,0%	\$6.286	18	0,3%
	3500 TEU		\$5.599	\$5.501	\$98	↗ 1,8%	\$5.325	\$274	5,1%	\$5.955	-356	-6,0%
	4250 TEU		\$4.352	\$4.285	\$67	↗ 1,6%	\$4.198	\$154	3,7%	\$5.946	-1.594	-26,8%

### New ConTex



#### Disclaimer

The brand NewConTex is copyrighted by Vereinigung Hamburger Schiffsmakler und Schiffsagenten e.V. ("VHSS e.V.") and is protected by law. The NewConTex may be published only with the source reference © VHSS e.V. It is distributed to the general public for information purposes only and cannot be relied upon as a trading recommendation and does not constitute a solicitation to trade. The reported information is obtained from market sources. While every effort has been made to ensure the accuracy and the completeness of the NewConTex, VHSS e.V. makes no representations, conditions or warranties of any kind, express or implied, about the completeness, accuracy, reliability, or suitability of the NewConTex. Any reliance you place on the NewConTex is therefore strictly at your own risk. Neither VHSS e.V. nor any of its subsidiaries or affiliates nor any employee of the foregoing shall be liable or have any responsibility for any loss, liability or damage, cost or expense including without limitation, indirect or consequential loss or damage, or any loss or damage whatsoever arising from loss of data or profits arising out of, or in connection with, the use of and the reliance on the NewConTex, save for death or personal injury arising from VHSS e.V. negligence and fraudulent misrepresentation that cannot, under German law, be excluded.