



## New ConTex Container Ship Time Charter Assessment Index

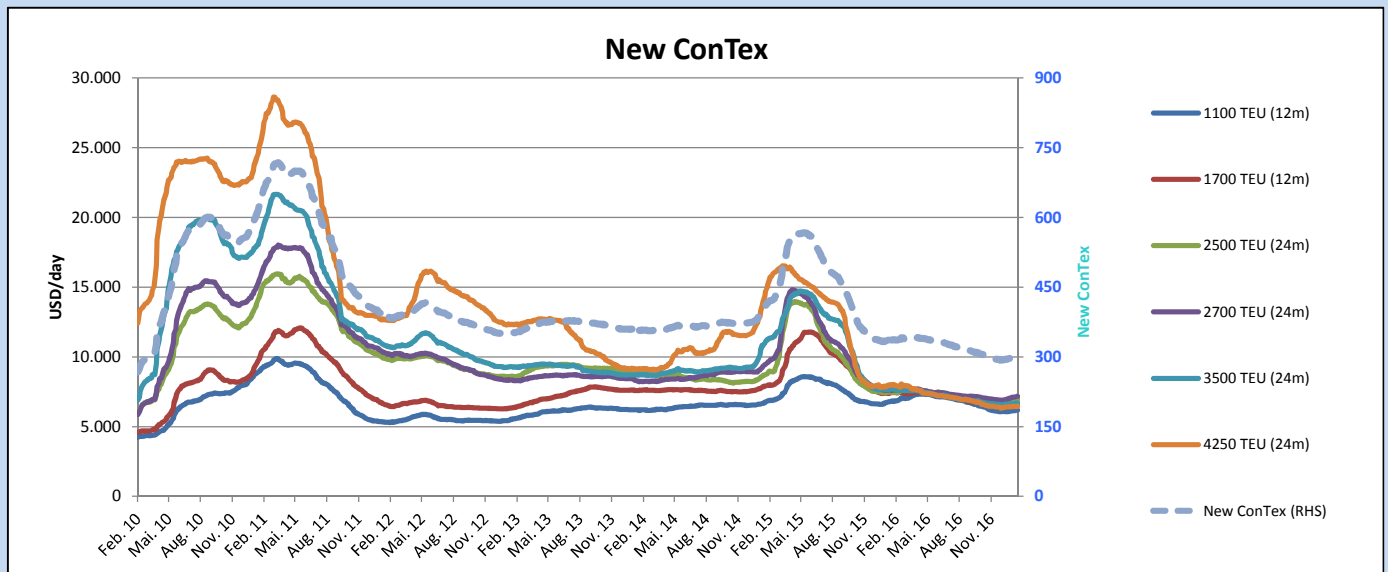
New ConTex*		303	
09.02.17		12 mos	24 mos
Gearless	1100 TEU	\$6.178	n.a.
	1700 TEU	\$6.637	
	2500 TEU	\$6.037	
Gearless	2700 TEU	\$6.286	\$7.166
	3500 TEU	\$5.501	\$6.679
	4250 TEU	\$4.285	\$6.453

Legend		
↑	up	+ 2% or more
↗	steady up	from +1% to +1,9%
→	steady	+/- 1%
↘	steady down	from -1% to -1,9%
↓	down	- 2% or less

\*New ConTex evaluation is EXCLUDING 2500/2700/3500/4250 TEU groups for 12 months period

New ConTex-Commentary - issued:	09.02.17
<p>The New ConTex Index managed to gain a further point this week and presently stands at 303. All the component rates were marked higher except for a very slight drop being recorded for the 3500 TEUs (24 months). The largest gain was made by the 2500 TEUs (12 months) being a full one percent higher week-on-week. Otherwise most of the rates were marked higher in the range of 0.1 - 0.7 percent over the previous week.</p> <p>Given the current fragility and the generally lethargic feel of the market just at the moment, this is not a mean feat. What we are seeing now are the very early stages of a modest market recovery. It may be nothing to get too excited about as there are still too many ships out there (and we should all be mindful of the number of idle ships which can potentially be re-activated); nevertheless it is a recovery and after so many months of unfavourable developments, it is pleasing to note.</p> <p>The projected growth in cargo for 2017 is currently being estimated at about 3.5% above 2016 compared with the container fleet's capacity being expected to grow by about 3% above the 2016 figure.</p>	

		New ConTex Development										
Vessel type	Evaluated Period	Today	Week-on-Week		Month-on-Month			Year-on-Year				
		09.02.17	02.02.17	Change	Change	10.01.17	Change	Change	09.02.16	Change	Change	
<b>New ConTex*</b>		<b>303</b>	302	1	→	0,3%	295	8	2,7%	337	-34	-10,1%
New ConTex	1100 TEU	\$6.178	\$6.169	\$9	→	0,1%	\$6.064	\$114	1,9%	\$6.810	-632	-9,3%
	1700 TEU	\$6.637	\$6.600	\$37	→	0,6%	\$6.426	\$211	3,3%	\$7.435	-798	-10,7%
	2500 TEU	\$6.944	\$6.907	\$37	→	0,5%	\$6.686	\$258	3,9%	\$7.473	-529	-7,1%
	2700 TEU	\$7.166	\$7.132	\$34	→	0,5%	\$6.959	\$207	3,0%	\$7.619	-453	-5,9%
	3500 TEU	\$6.679	\$6.681	-\$2	→	0,0%	\$6.592	\$87	1,3%	\$7.698	-1.019	-13,2%
	4250 TEU	\$6.453	\$6.445	\$8	→	0,1%	\$6.419	\$34	0,5%	\$7.982	-1.529	-19,2%
Gearless	2500 TEU	\$6.037	\$5.979	\$58	→	1,0%	\$5.707	\$330	5,8%	\$6.077	-40	-0,7%
	2700 TEU	\$6.286	\$6.267	\$19	→	0,3%	\$6.063	\$223	3,7%	\$6.269	17	0,3%
	3500 TEU	\$5.501	\$5.465	\$36	→	0,7%	\$5.313	\$188	3,5%	\$5.940	-439	-7,4%
	4250 TEU	\$4.285	\$4.264	\$21	→	0,5%	\$4.201	\$84	2,0%	\$5.929	-1.644	-27,7%



**Disclaimer**

The brand NewConTex is copyrighted by Vereinigung Hamburger Schiffsmakler und Schiffsagenten e.V. ("VHSS e.V.") and is protected by law. The NewConTex may be published only with the source reference © VHSS e.V. It is distributed to the general public for information purposes only and cannot be relied upon as a trading recommendation and does not constitute a solicitation to trade. The reported information is obtained from market sources. While every effort has been made to ensure the accuracy and the completeness of the NewConTex, VHSS e.V. makes no representations, conditions or warranties of any kind, express or implied, about the completeness, accuracy, reliability, or suitability of the NewConTex. Any reliance you place on the NewConTex is therefore strictly at your own risk. Neither VHSS e.V. nor any of its subsidiaries or affiliates nor any employee of the foregoing shall be liable or have any responsibility for any loss, liability or damage, cost or expense including without limitation, indirect or consequential loss or damage, or any loss or damage whatsoever arising from loss of data or profits arising out of, or in connection with, the use of and the reliance on the NewConTex, save for death or personal injury arising from VHSS e.V. negligence and fraudulent misrepresentation that cannot, under German law, be excluded.