



New ConTex Container Ship Time Charter Assessment Index

New ConTex*		302	
02.02.17		12 mos	24 mos
Geared	1100 TEU	\$6.169	n.a.
	1700 TEU	\$6.600	
	2500 TEU	\$5.979	
Gearless	2700 TEU	\$6.267	\$7.132
	3500 TEU	\$5.465	\$6.681
	4250 TEU	\$4.264	\$6.445

Legend		
↑	up	+ 2% or more
↗	steady up	from +1% to +1,9%
→	steady	+/- 1 %
↘	steady down	from -1% to -1,9%
↓	down	- 2% or less

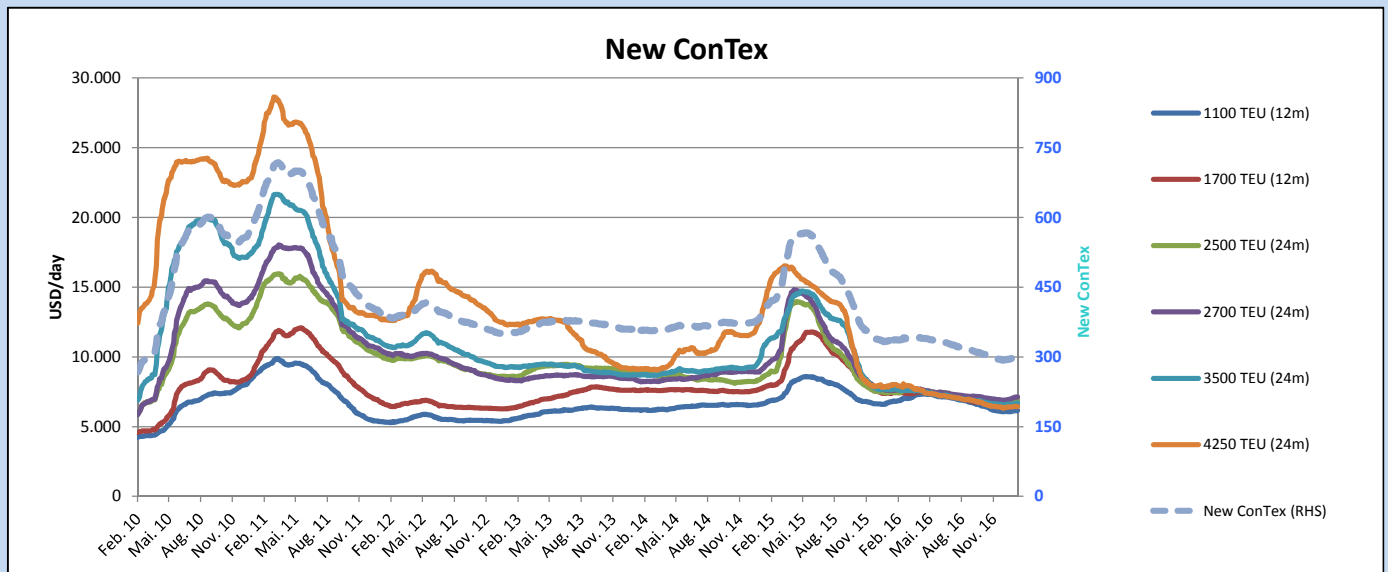
*New ConTex evaluation is EXCLUDING 2500/2700/3500/4250 TEU groups for 12 months period

New ConTex-Commentary - issued: 02.02.17

With the Chinese New Year in full swing, the New ConTex saw another two point increase to 302. As expected activity has slowed but the market level has remained steady, showing minimal gains across the sizes, with a few exceptions. The 2500 TEU types continue to rise, last week increasing by almost 1.4% on a 12 month basis on the back of tightening availability, while the 4,250 TEU types have moved a tick lower on the 24 month assessment, despite a slight gain in the previous week, narrowing the spread between the rate level basis 12 and 24 month.

Although the month on month changes indicate a positive trend, the year on year change put the current market level into perspective. The 4250 types have had the steepest declines year on year and the prospects for this segment are still challenging.

Vessel type		Evaluated Period	New ConTex Development										
			Today 02.02.17	Week-on-Week 26.01.17		Month-on-Month 03.01.17		Year-on-Year 02.02.16					
				Change	Change		Change	Change		Change	Change		
New ConTex*		302	300	2	→	0,7%	294	8	2,7%	336	-34	-10,1%	
New ConTex	1100 TEU	12 mos	\$6.169	\$6.140	\$29	→	0,5%	\$6.092	\$77	1,3%	\$6.773	-604	-8,9%
	1700 TEU		\$6.600	\$6.565	\$35	→	0,5%	\$6.402	\$198	3,1%	\$7.385	-785	-10,6%
	2500 TEU	24 mos	\$6.907	\$6.850	\$57	→	0,8%	\$6.617	\$290	4,4%	\$7.538	-631	-8,4%
	2700 TEU		\$7.132	\$7.103	\$29	→	0,4%	\$6.920	\$212	3,1%	\$7.662	-530	-6,9%
	3500 TEU		\$6.681	\$6.651	\$30	→	0,5%	\$6.583	\$98	1,5%	\$7.663	-982	-12,8%
	4250 TEU		\$6.445	\$6.453	-\$8	→	-0,1%	\$6.399	\$46	0,7%	\$7.941	-1.496	-18,8%
2500 TEU	12 mos	\$5.979	\$5.896	\$83	↗	1,4%	\$5.613	\$366	6,5%	\$6.087	-108	-1,8%	
2700 TEU		\$6.267	\$6.239	\$28	→	0,4%	\$5.993	\$274	4,6%	\$6.303	-36	-0,6%	
3500 TEU		\$5.465	\$5.411	\$54	→	1,0%	\$5.295	\$170	3,2%	\$5.964	-499	-8,4%	
4250 TEU		\$4.264	\$4.246	\$18	→	0,4%	\$4.195	\$69	1,6%	\$5.910	-1.646	-27,9%	



Disclaimer

The brand NewConTex is copyrighted by Vereinigung Hamburger Schiffsmakler und Schiffsagenten e.V. ("VHSS e.V.") and is protected by law. The NewConTex may be published only with the source reference © VHSS e.V. It is distributed to the general public for information purposes only and cannot be relied upon as a trading recommendation and does not constitute a solicitation to trade. The reported information is obtained from market sources. While every effort has been made to ensure the accuracy and the completeness of the NewConTex, VHSS e.V. makes no representations, conditions or warranties of any kind, express or implied, about the completeness, accuracy, reliability, or suitability of the NewConTex. Any reliance you place on the NewConTex is therefore strictly at your own risk. Neither VHSS e.V. nor any of its subsidiaries or affiliates nor any employee of the foregoing shall be liable or have any responsibility for any loss, liability or damage, cost or expense including without limitation, indirect or consequential loss or damage, or any loss or damage whatsoever arising from loss of data or profits arising out of, or in connection with, the use of and the reliance on the NewConTex, save for death or personal injury arising from VHSS e.V. negligence and fraudulent misrepresentation that cannot, under German law, be excluded.