



New ConTex Container Ship Time Charter Assessment Index

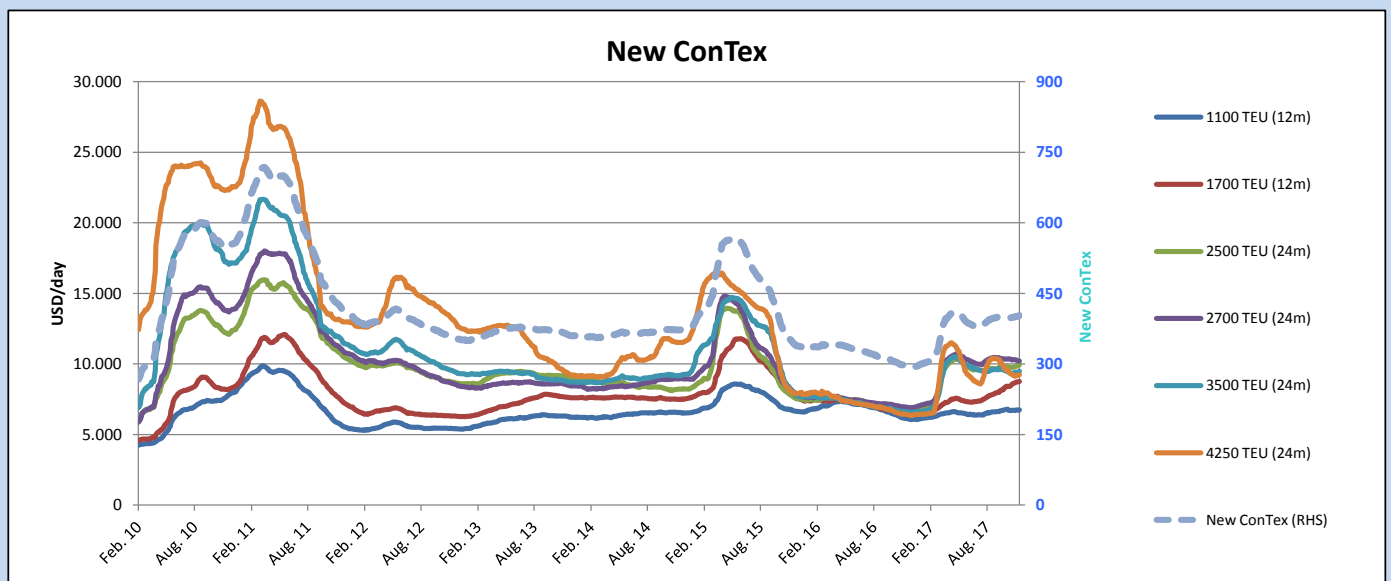
New ConTex*		403	
07.12.17		12 mos	24 mos
Gearless	1100 TEU	\$6.742	n.a.
	1700 TEU	\$8.769	
	2500 TEU	\$8.913	
Gearless	2700 TEU	\$9.202	\$10.200
	3500 TEU	\$8.360	\$9.474
	4250 TEU	\$7.736	\$9.228

Legend		
↑	up	+ 2% or more
↗	steady up	from +1% to +1,9%
→	steady	+/- 1 %
↘	steady down	from -1% to -1,9%
↓	down	- 2% or less

*New ConTex evaluation is EXCLUDING 2500/2700/3500/4250 TEU groups for 12 months period

New ConTex-Commentary - issued:	07.12.17
<p>This week the New ConTex increased by 2 points and is following its stable sideways movement observed during the last two weeks. All evaluated vessel classes, except the 2,700 TEU type, could achieve rate gains between 0.2 and 0.8%. The index rate for 2,700 TEU vessels decreased by \$37 for the 24 months period and \$68 for the 12 months period.</p> <p>In addition, it can be noted that the panamaxs (3,500 TEU and 4,250 TEU) continued to stabilize after they suffered losses during October and the first half of November. The relatively cheap charter rates for this ships have led to growing demand. In line with these developments the idle panamax fleet has fallen to its lowest level since August 2015.</p>	

New ConTex Development													
Vessel type	Evaluated Period	Today	Week-on-Week		Month-on-Month			Year-on-Year					
			07.12.17	30.11.17	Change	Change	07.11.17	Change	Change	06.12.16	Change	Change	
New ConTex*		403	401	2	↗	0,5%	399	4	1,0%	296	107	36,1%	
New ConTex	1100 TEU	12 mos	\$6.742	\$6.730	\$12	↗	0,2%	\$6.703	\$39	0,6%	\$6.145	597	9,7%
	1700 TEU		\$8.769	\$8.729	\$40	↗	0,5%	\$8.428	\$341	4,0%	\$6.464	2.305	35,7%
	2500 TEU	24 mos	\$9.937	\$9.871	\$66	↗	0,7%	\$9.764	\$173	1,8%	\$6.594	3.343	50,7%
	2700 TEU		\$10.200	\$10.237	-\$37	↘	-0,4%	\$10.348	-\$148	-1,4%	\$6.936	3.264	47,1%
	3500 TEU		\$9.474	\$9.398	\$76	↗	0,8%	\$9.365	\$109	1,2%	\$6.611	2.863	43,3%
4250 TEU		\$9.228	\$9.198	\$30	↗	0,3%	\$9.330	-\$102	-1,1%	\$6.414	2.814	43,9%	
New ConTex	2500 TEU	12 mos	\$8.913	\$8.876	\$37	↗	0,4%	\$8.753	\$160	1,8%	\$5.527	3.386	61,3%
	2700 TEU		\$9.202	\$9.270	-\$68	↘	-0,7%	\$9.387	-\$185	-2,0%	\$5.972	3.230	54,1%
	3500 TEU		\$8.360	\$8.335	\$25	↗	0,3%	\$8.233	\$127	1,5%	\$5.344	3.016	56,4%
	4250 TEU		\$7.736	\$7.676	\$60	↗	0,8%	\$7.835	-\$99	-1,3%	\$4.196	3.540	84,4%



Disclaimer

The brand NewConTex is copyrighted by Vereinigung Hamburger Schiffsmakler und Schiffsagenten e.V. ("VHSS e.V.") and is protected by law. The NewConTex may be published only with the source reference © VHSS e.V. It is distributed to the general public for information purposes only and cannot be relied upon as a trading recommendation and does not constitute a solicitation to trade. The reported information is obtained from market sources. While every effort has been made to ensure the accuracy and the completeness of the NewConTex, VHSS e.V. makes no representations, conditions or warranties of any kind, express or implied, about the completeness, accuracy, reliability, or suitability of the NewConTex. Any reliance you place on the NewConTex is therefore strictly at your own risk. Neither VHSS e.V. nor any of its subsidiaries or affiliates nor any employee of the foregoing shall be liable or have any responsibility for any loss, liability or damage, cost or expense including without limitation, indirect or consequential loss or damage, or any loss or damage whatsoever arising from loss of data or profits arising out of, or in connection with, the use of and the reliance on the NewConTex, save for death or personal injury arising from VHSS e.V. negligence and fraudulent misrepresentation that cannot, under German law, be excluded.