



New ConTex Container Ship Time Charter Assessment Index

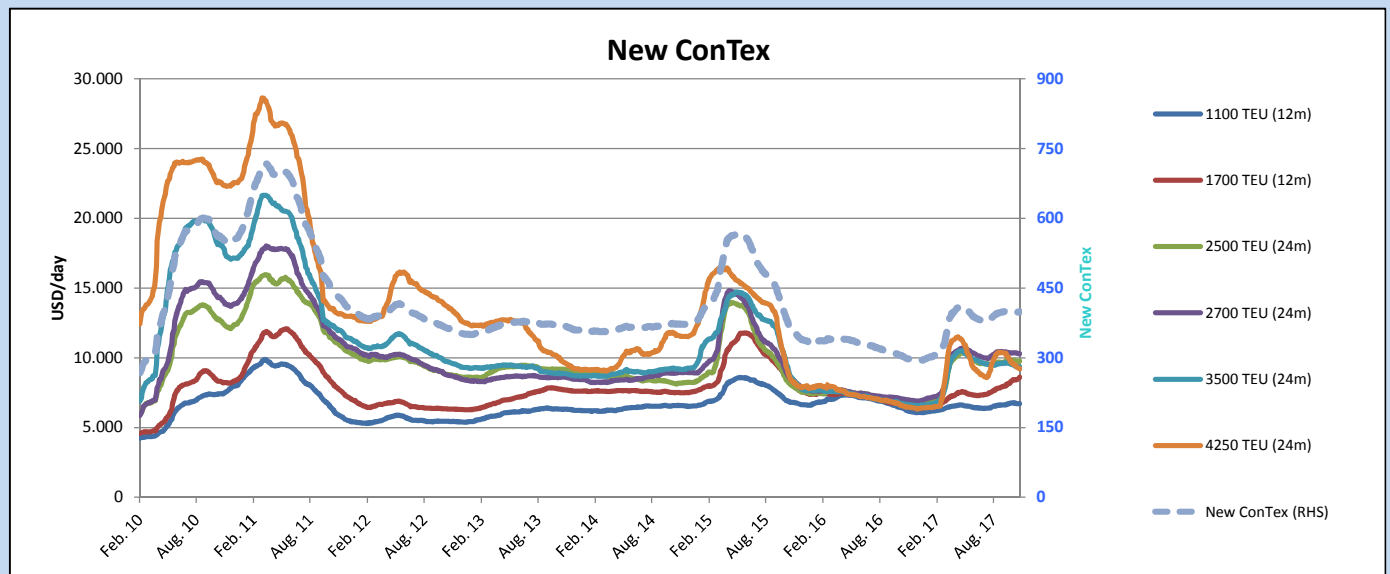
New ConTex*		399	
		12 mos	24 mos
Gearless	1100 TEU	\$6.709	n.a.
	1700 TEU	\$8.610	
	2500 TEU	\$8.754	\$9.758
Gearless	2700 TEU	\$9.331	\$10.297
	3500 TEU	\$8.265	\$9.349
	4250 TEU	\$7.741	\$9.213

Legend		
↑	up	+ 2% or more
↗	steady up	from +1% to +1,9%
↔	steady	+/- 1%
↘	steady down	from -1% to -1,9%
↓	down	- 2% or less

*New ConTex evaluation is EXCLUDING
2500/2700/3500/4250 TEU groups for
12 months period

New ConTex-Commentary - issued:	16.11.17
<p>The New ConTex reached 399 points (+1) after slightly decreasing in the last two weeks. The market activity is on a solid level and in some segments supply is tightening, creating optimism for the coming weeks. Market fundamentals clearly improved and the New ConTex index is one third higher compared to last year. It is worth mentioning that the idle capacities are nearly one million TEU lower than last year's season and on the 30th of October 2017 only 3% of global container fleet was seeking employment (Source Alphaliner).</p> <p>Even though the classic panamax segment decreased by 0,8% w-o-w (12 mos evaluation), the number of vessels available for charter is shrinking and charter rates are stabilized for now. Attention remains focused on the 1,700 TEU class among the feeder segments. Backed by healthy demand and a solid number of fixtures, the index further increased by 1,7% w-o-w (12 mos evaluation). The situation in other segments is well balanced and only marginal changes can be reported.</p>	

		New ConTex Development											
Vessel type	Evaluated Period	Today	Week-on-Week		Month-on-Month			Year-on-Year					
			16.11.17	09.11.17	Change	Change	17.10.17	Change	Change	15.11.16	Change	Change	
New ConTex*		399	398	1	→	0,3%	401	-2	-0,5%	300	99	33,0%	
New ConTex	1100 TEU	12 mos	\$6.709	\$6.703	\$6	→	0,1%	\$6.723	-\$14	-0,2%	\$6.278	431	6,9%
	1700 TEU	24 mos	\$8.610	\$8.466	\$144	↗	1,7%	\$8.174	\$436	5,3%	\$6.617	1.993	30,1%
	2500 TEU		\$9.758	\$9.751	\$7	→	0,1%	\$9.863	-\$105	-1,1%	\$6.669	3.089	46,3%
	2700 TEU		\$10.297	\$10.317	-\$20	→	-0,2%	\$10.368	-\$71	-0,7%	\$7.003	3.294	47,0%
	3500 TEU		\$9.349	\$9.331	\$18	→	0,2%	\$9.645	-\$296	-3,1%	\$6.665	2.684	40,3%
4250 TEU	\$9.213		\$9.307	-\$94	↘	-1,0%	\$9.837	-\$624	-6,3%	\$6.497	2.716	41,8%	
2500 TEU	12 mos	\$8.754	\$8.750	\$4	→	0,0%	\$8.857	-\$103	-1,2%	\$5.505	3.249	59,0%	
2700 TEU		\$9.331	\$9.366	-\$35	→	-0,4%	\$9.334	-\$3	0,0%	\$6.002	3.329	55,5%	
3500 TEU		\$8.265	\$8.222	\$43	→	0,5%	\$8.314	-\$49	-0,6%	\$5.330	2.935	55,1%	
4250 TEU		\$7.741	\$7.801	-\$60	→	-0,8%	\$8.501	-\$760	-8,9%	\$4.291	3.450	80,4%	



Disclaimer

The brand NewConTex is copyrighted by Vereinigung Hamburger Schiffsmakler und Schiffsagenten e.V. ("VHSS e.V.") and is protected by law. The NewConTex may be published only with the source reference © VHSS e.V. It is distributed to the general public for information purposes only and cannot be relied upon as a trading recommendation and does not constitute a solicitation to trade. The reported information is obtained from market sources. While every effort has been made to ensure the accuracy and the completeness of the NewConTex, VHSS e.V. makes no representations, conditions or warranties of any kind, express or implied, about the completeness, accuracy, reliability, or suitability of the NewConTex. Any reliance you place on the NewConTex is therefore strictly at your own risk. Neither VHSS e.V. nor any of its subsidiaries or affiliates nor any employee of the foregoing shall be liable or have any responsibility for any loss, liability or damage, cost or expense including without limitation, indirect or consequential loss or damage, or any loss or damage whatsoever arising from loss of data or profits arising out of, or in connection with, the use of and the reliance on the NewConTex, save for death or personal injury arising from VHSS e.V. negligence and fraudulent misrepresentation that cannot, under German law, be excluded.