



New ConTex Container Ship Time Charter Assessment Index

New ConTex*		398	
09.11.17		12 mos	24 mos
Gearless	1100 TEU	\$6.703	n.a.
	1700 TEU	\$8.466	
	2500 TEU	\$8.750	
Gearless	2700 TEU	\$9.366	\$10.317
	3500 TEU	\$8.222	\$9.331
	4250 TEU	\$7.801	\$9.307

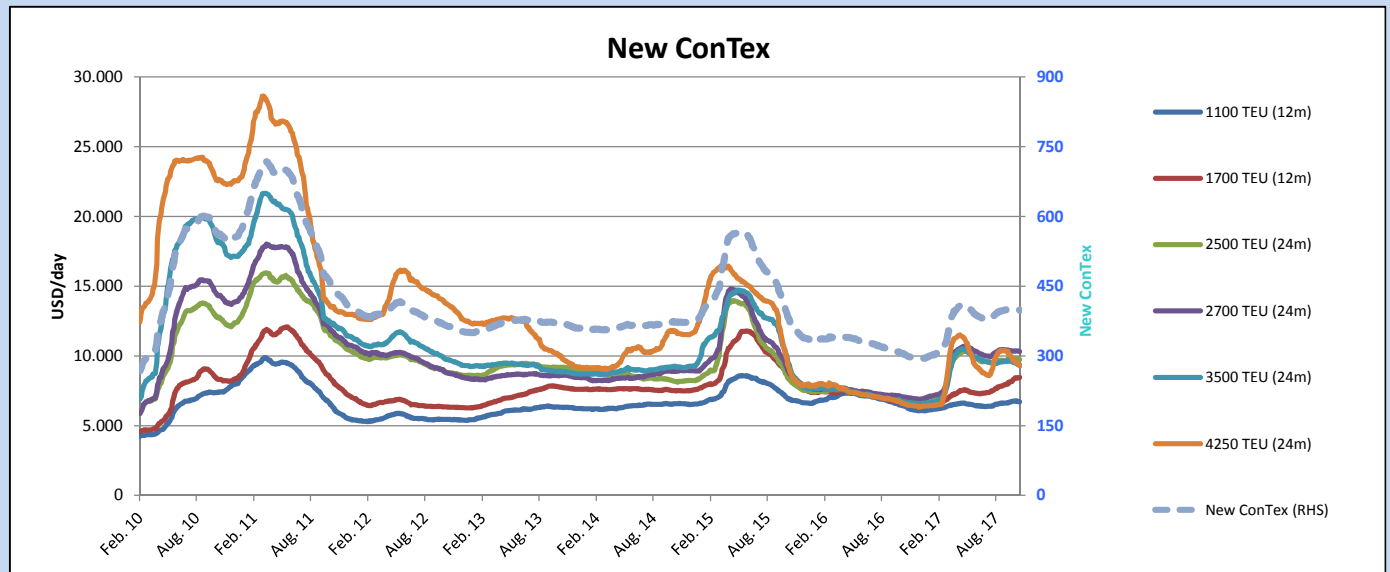
Legend		
↑	up	+ 2% or more
↗	steady up	from +1% to +1,9%
→	steady	+/- 1 %
↘	steady down	from -1% to -1,9%
↓	down	- 2% or less

*New ConTex evaluation is EXCLUDING
2500/2700/3500/4250 TEU groups for
12 months period

New ConTex-Commentary - issued:	09.11.17
<p>The "69. Eisbeissen" event has been successfully passed and we are entering now the dark season of the year.</p> <p>In the first week of November, the New ConTex had to accept crossing the level of 400 points again and is now evaluated at 398. This momentum is strongly supported by the negative trend of the Panamax rates, which are now 7,8% lower (m-o-m basis) for the 24 mos evaluation, resp. even 11,2% lower (m-o-m basis) for the 12 mos evaluation.</p> <p>One exemption in the rate development is represented by the 12 mos evaluation of the 1700 TEU class. Contrary to all other evaluations these ships are earning on a w-o-w basis even 0,7% (USD 61,-) compared to what has been evaluated during the Eisbein week. For this particular segment, quite some demand has been seen recently, which is in particular trading areas also reflected in the rates achieved whilst fixing. A good part of the tonnage still becoming available during the balance of 2017 will likely be extended, i.e. it might be the case that we see further recovery at least in this class.</p>	

New ConTex Development

Vessel type	Evaluated Period	Today 09.11.17	Week-on-Week		Month-on-Month			Year-on-Year			
			02.11.17	Change	Change	10.10.17	Change	Change	08.11.16	Change	Change
New ConTex*		398	400	-2	↘ -0,5%	401	-3	-0,7%	303	95	31,4%
New ConTex	1100 TEU	\$6.703	\$6.723	-\$20	↘ -0,3%	\$6.691	\$12	0,2%	\$6.393	310	4,8%
	1700 TEU	\$8.466	\$8.405	\$61	↗ 0,7%	\$8.143	\$323	4,0%	\$6.671	1.795	26,9%
	2500 TEU	\$9.751	\$9.807	-\$56	↘ -0,6%	\$9.864	-\$113	-1,1%	\$6.726	3.025	45,0%
	2700 TEU	\$10.317	\$10.359	-\$42	↘ -0,4%	\$10.378	-\$61	-0,6%	\$7.036	3.281	46,6%
	3500 TEU	\$9.331	\$9.405	-\$74	↘ -0,8%	\$9.672	-\$341	-3,5%	\$6.721	2.610	38,8%
	4250 TEU	\$9.307	\$9.462	-\$155	↘ -1,6%	\$10.092	-\$785	-7,8%	\$6.537	2.770	42,4%
	2500 TEU	\$8.750	\$8.753	-\$3	↘ 0,0%	\$8.822	-\$72	-0,8%	\$5.547	3.203	57,7%
	2700 TEU	\$9.366	\$9.403	-\$37	↘ -0,4%	\$9.344	\$22	0,2%	\$6.018	3.348	55,6%
	3500 TEU	\$8.222	\$8.248	-\$26	↘ -0,3%	\$8.365	-\$143	-1,7%	\$5.356	2.866	53,5%
	4250 TEU	\$7.801	\$8.007	-\$206	↓ -2,6%	\$8.780	-\$979	-11,2%	\$4.332	3.469	80,1%



Disclaimer

The brand NewConTex is copyrighted by Vereinigung Hamburger Schiffsmakler und Schiffsagenten e.V. ("VHSS e.V.") and is protected by law. The NewConTex may be published only with the source reference © VHSS e.V. It is distributed to the general public for information purposes only and cannot be relied upon as a trading recommendation and does not constitute a solicitation to trade. The reported information is obtained from market sources. While every effort has been made to ensure the accuracy and the completeness of the NewConTex, VHSS e.V. makes no representations, conditions or warranties of any kind, express or implied, about the completeness, accuracy, reliability, or suitability of the NewConTex. Any reliance you place on the NewConTex is therefore strictly at your own risk. Neither VHSS e.V. nor any of its subsidiaries or affiliates nor any employee of the foregoing shall be liable or have any responsibility for any loss, liability or damage, cost or expense including without limitation, indirect or consequential loss or damage, or any loss or damage whatsoever arising from loss of data or profits arising out of, or in connection with, the use of and the reliance on the NewConTex, save for death or personal injury arising from VHSS e.V. negligence and fraudulent misrepresentation that cannot, under German law, be excluded.