



## New ConTex Container Ship Time Charter Assessment Index

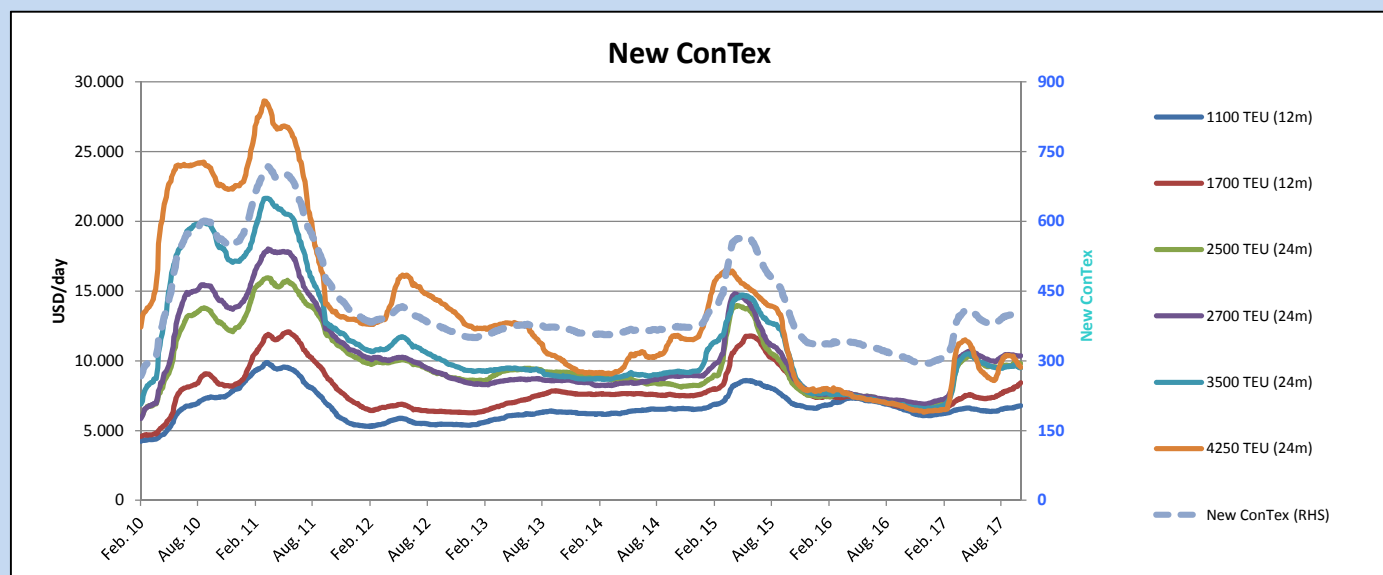
New ConTex*		401	
26.10.17		12 mos	24 mos
Geared	1100 TEU	\$6.778	n.a.
	1700 TEU	\$8.423	
	2500 TEU	\$8.823	
Gearless	2700 TEU	\$9.357	\$10.354
	3500 TEU	\$8.300	\$9.485
	4250 TEU	\$8.157	\$9.543

Legend		
↑	up	+ 2% or more
↗	steady up	from +1% to +1,9%
→	steady	+/- 1 %
↘	steady down	from -1% to -1,9%
↓	down	- 2% or less

\*New ConTex evaluation is EXCLUDING  
2500/2700/3500/4250 TEU groups for  
12 months period

New ConTex-Commentary - issued:		26.10.17
<p>The New ConTex overall did not move compared to past 4 weeks but this is mainly due to adjustments of different segments and does not mean that there were no variations in the individual segments.</p> <p>As seen recently the segments of 3,500 TEU and above are facing a downturn especially the 4,250 TEU due to insufficient demand and spot positions that are piling up mainly in Asia where majority of the ships are concentrated, now the index is at USD 8,157 for 12 months down by USD 839 a month ago.</p> <p>In the feeder segments the healthiest one seems to be the 1,700 TEU which was pushed up by geared ships (although historically gls vsls had always achieved better rates in Asia) whom demand has increased amongst other factors due to the situation in Chittagong. For this size however also the Atlantic is well balanced and the index is showing a general positive trend that pushed rates up to USD 8,423 which is an increase of nearly USD 465 compared to few weeks ago.</p> <p>2,700 TEU seems amongst the more stable segments at the moment with rates achievable in the region of USD 9,357 for a period of 12 months and, although in Asia lately number of fresh orders have slowed down a bit, the situation is well balanced and these ships are still in good demand.</p>		

			New ConTex Development								
Vessel type	Evaluated Period	Today	Week-on-Week			Month-on-Month			Year-on-Year		
		26.10.17	19.10.17	Change	Change	26.09.17	Change	Change	25.10.16	Change	Change
New ConTex*		401	401	0	➡ 0,0%	399	2	0,5%	306	95	31,0%
New ConTex	1100 TEU	12 mos	\$6.778	\$6.746	\$32 ➡ 0,5%	\$6.623	\$155	2,3%	\$6.473	305	4,7%
	1700 TEU		\$8.423	\$8.295	\$128 ➡ 1,5%	\$7.958	\$465	5,8%	\$6.692	1.731	25,9%
	2500 TEU		\$9.813	\$9.857	-\$44 ➡ -0,4%	\$9.671	\$142	1,5%	\$6.796	3.017	44,4%
	2700 TEU	24 mos	\$10.354	\$10.335	\$19 ➡ 0,2%	\$10.438	-\$84 -0,8%	\$7.098	3.256	45,9%	
	3500 TEU		\$9.485	\$9.542	-\$57 ➡ -0,6%	\$9.603	-\$118 -1,2%	\$6.769	2.716	40,1%	
	4250 TEU		\$9.543	\$9.696	-\$153 ➡ -1,6%	\$10.335	-\$792 -7,7%	\$6.678	2.865	42,9%	
	2500 TEU	12 mos	\$8.823	\$8.877	-\$54 ➡ -0,6%	\$8.706	\$117	1,3%	\$5.631	3.192	56,7%
	2700 TEU		\$9.357	\$9.323	\$34 ➡ 0,4%	\$9.405	-\$48 -0,5%	\$6.085	3.272	53,8%	
	3500 TEU		\$8.300	\$8.299	\$1 ➡ 0,0%	\$8.338	-\$38 -0,5%	\$5.429	2.871	52,9%	
	4250 TEU		\$8.157	\$8.375	-\$218 ↓ -2,6%	\$8.996	-\$839 -9,3%	\$4.447	3.710	83,4%	



Disclaimer

The brand NewConTex is copyrighted by Vereinigung Hamburger Schiffsmakler und Schiffsagenten e.V. ("VHSS e.V.") and is protected by law. The NewConTex may be published only with the source reference © VHSS e.V. It is distributed to the general public for information purposes only and cannot be relied upon as a trading recommendation and does not constitute a solicitation to trade. The reported information is obtained from market sources. While every effort has been made to ensure the accuracy and the completeness of the NewConTex, VHSS e.V. makes no representations, conditions or warranties of any kind, express or implied, about the completeness, accuracy, reliability, or suitability of the NewConTex. Any reliance you place on the NewConTex is therefore strictly at your own risk. Neither VHSS e.V. nor any of its subsidiaries or affiliates nor any employee of the foregoing shall be liable or have any responsibility for any loss, liability or damage, cost or expense including without limitation, indirect or consequential loss or damage, or any loss or damage whatsoever arising from loss of data or profits arising out of, or in connection with, the use of and the reliance on the NewConTex, save for death or personal injury arising from VHSS e.V. negligence and fraudulent misrepresentation that cannot, under German law, be excluded.