



## New ConTex Container Ship Time Charter Assessment Index

New ConTex*		401	
19.10.17		12 mos	24 mos
Geared	1100 TEU	\$6.746	n.a.
	1700 TEU	\$8.295	
	2500 TEU	\$8.877	\$9.857
Gearless	2700 TEU	\$9.323	\$10.335
	3500 TEU	\$8.299	\$9.542
	4250 TEU	\$8.375	\$9.696

Legend		
↑	up	+ 2% or more
↗	steady up	from +1% to +1,9%
→	steady	+/- 1 %
↘	steady down	from -1% to -1,9%
↓	down	- 2% or less

\*New ConTex evaluation is EXCLUDING  
2500/2700/3500/4250 TEU groups for  
12 months period

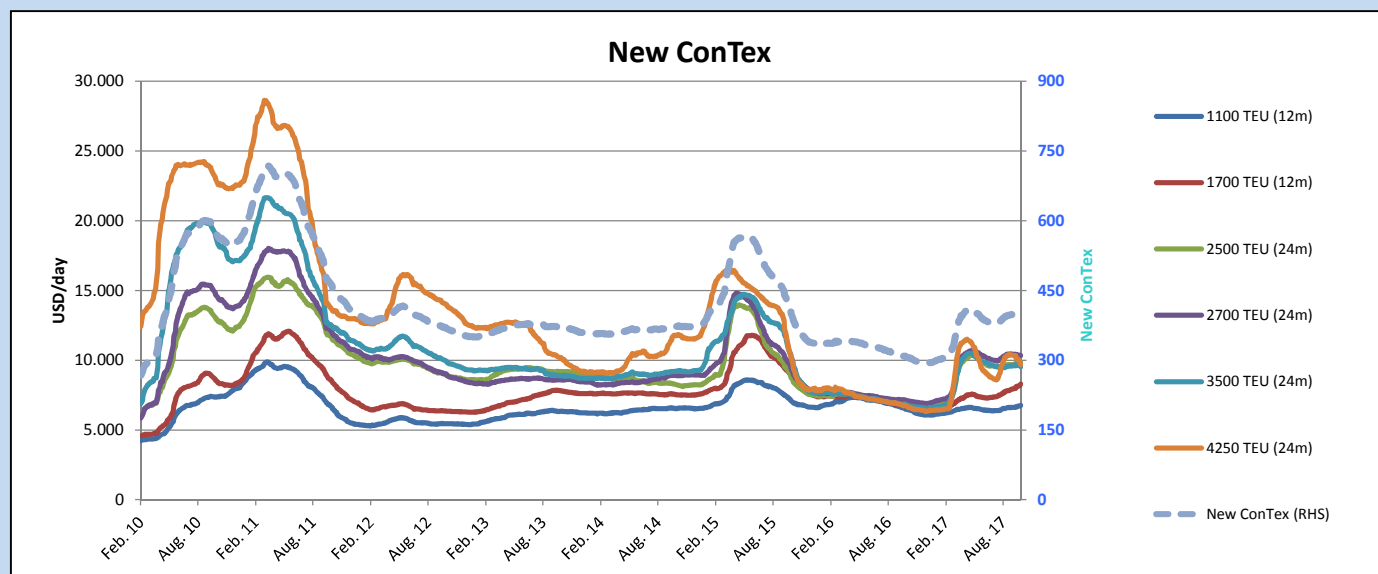
### New ConTex-Commentary - issued:

19.10.17

For the third week in a row the New ConTex was relatively stable, closing at 401 points. Overall the changes are quite marginal, the feeder segment seeing a slight upward trend for the 1,700 TEU with +1.7% as a result of a higher activity level recorded over the past weeks. The downward trend continues for the larger segments, as volumes of fixtures for vessels between 3,500-4,250 TEU has been reduced over the past month. With idle tonnage increasing each week and limited demand, the 4,250 TEU drops another -2.9% to USD 8,375 per day for a period of 12 months. The 3,500 TEU segment remains stable with limited supply giving a minimal loss of -0.2% for 12 months period, although for 24 months period the decrease was -0.8% taking the rate down to USD 9,542 per day. Limited changes for the 2,700 TEU, which sees rates very similar to last week. The smaller 1,100 TEU and 1,700 TEU sizes have increased by +0.7% and +1.7% respectively to USD 6,746 and USD 8,295 for 12 month periods. Especially the 1,700 TEU vessels has seen a positive boost over the past month rising +4.9% up almost USD 400 per day for 12 month period.

### New ConTex Development

Vessel type		Evaluated Period	Today	Week-on-Week				Month-on-Month			Year-on-Year		
			19.10.17	12.10.17	Change		Change	19.09.17	Change	Change	18.10.16	Change	Change
New ConTex*			401	401	0	→	0,0%	398	3	0,8%	309	92	29,8%
New ConTex	1100 TEU	12 mos	\$6.746	\$6.700	\$46	↗	0,7%	\$6.611	\$135	2,0%	\$6.529	217	3,3%
	1700 TEU		\$8.295	\$8.160	\$135	↗	1,7%	\$7.904	\$391	4,9%	\$6.734	1.561	23,2%
	2500 TEU		\$9.857	\$9.842	\$15	→	0,2%	\$9.670	\$187	1,9%	\$6.888	2.969	43,1%
	2700 TEU	24 mos	\$10.335	\$10.371	-\$36	↘	-0,3%	\$10.452	-\$117	-1,1%	\$7.149	3.186	44,6%
	3500 TEU		\$9.542	\$9.616	-\$74	↘	-0,8%	\$9.590	-\$48	-0,5%	\$6.871	2.671	38,9%
	4250 TEU		\$9.696	\$9.991	-\$295	↓	-3,0%	\$10.379	-\$683	-6,6%	\$6.753	2.943	43,6%
	2500 TEU	12 mos	\$8.877	\$8.837	\$40	↗	0,5%	\$8.705	\$172	2,0%	\$5.675	3.202	56,4%
	2700 TEU		\$9.323	\$9.342	-\$19	↘	-0,2%	\$9.451	-\$128	-1,4%	\$6.124	3.199	52,2%
	3500 TEU		\$8.299	\$8.313	-\$14	↘	-0,2%	\$8.318	-\$19	-0,2%	\$5.468	2.831	51,8%
	4250 TEU		\$8.375	\$8.624	-\$249	↓	-2,9%	\$8.980	-\$605	-6,7%	\$4.491	3.884	86,5%



#### Disclaimer

The brand NewConTex is copyrighted by Vereinigung Hamburger Schiffsmakler und Schiffsagenten e.V. ("VHSS e.V.") and is protected by law. The NewConTex may be published only with the source reference © VHSS e.V. It is distributed to the general public for information purposes only and cannot be relied upon as a trading recommendation and does not constitute a solicitation to trade. The reported information is obtained from market sources. While every effort has been made to ensure the accuracy and the completeness of the NewConTex, VHSS e.V. makes no representations, conditions or warranties of any kind, express or implied, about the completeness, accuracy, reliability, or suitability of the NewConTex. Any reliance you place on the NewConTex is therefore strictly at your own risk. Neither VHSS e.V. nor any of its subsidiaries or affiliates nor any employee of the foregoing shall be liable or have any responsibility for any loss, liability or damage, cost or expense including without limitation, indirect or consequential loss or damage, or any loss or damage whatsoever arising from loss of data or profits arising out of, or in connection with, the use of and the reliance on the NewConTex, save for death or personal injury arising from VHSS e.V. negligence and fraudulent misrepresentation that cannot, under German law, be excluded.