



New ConTex Container Ship Time Charter Assessment Index

New ConTex*		401	
12.10.17		12 mos	24 mos
Gearless	1100 TEU	\$6.700	n.a.
	1700 TEU	\$8.160	
	2500 TEU	\$8.837	
Gearless	2700 TEU	\$9.342	\$10.371
	3500 TEU	\$8.313	\$9.616
	4250 TEU	\$8.624	\$9.991

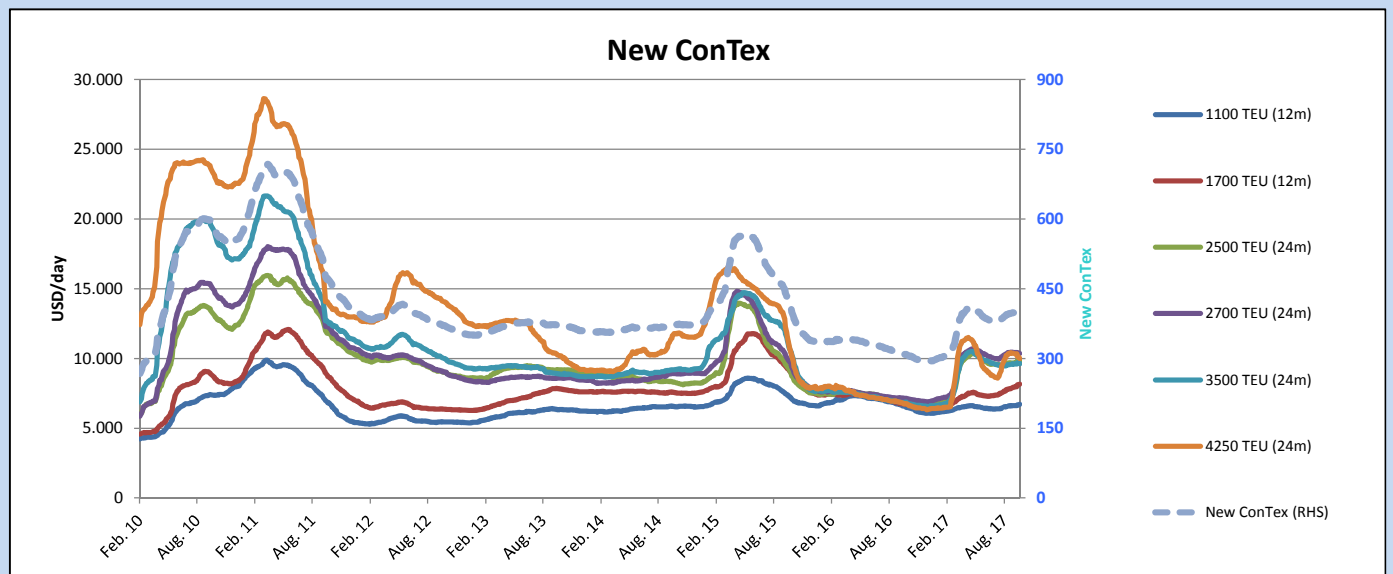
Legend		
↑	up	+ 2% or more
↔	steady up	from +1% to +1,9%
↔	steady	+/- 1 %
↔	steady down	from -1% to -1,9%
↓	down	- 2% or less

*New ConTex evaluation is EXCLUDING
2500/2700/3500/4250 TEU groups for
12 months period

New ConTex-Commentary - issued:	12.10.17
<p>The New ConTex did not show any movement at all since last Friday and closes at 401 points which is in line with last week's level. Overall there are only some marginal changes to report. Whilst we are noticing some improving numbers in the Feeder segment, the larger segments above 2,700 TEU are showing a downward tendency. The 4,250 TEU segment is showing the strongest loss. With very limited demand afloat, the 4,250 TEU segment continues to drop by another -2.5 % to USD 8,624 per day for a period of 12 months. The 3,500 TEU segment is following the downward trend with a loss of -0.7 % to USD 8,313 per day basis 12 months period. Another slight decreasing trend has been reported for the gearless 2,700 TEU segment with a minimal loss of USD 1 basis 24 months and a loss of USD 7 basis 12 months period. The smaller 1,100 TEU and 1,700 TEU sizes have increased by 0.5% and 0.7% respectively to USD 6,700 and USD 8,160 for 12 months periods, showing signs of a slight improvement. Indeed rates in the feeder segments have increased since last month, up from USD 6,611 for 1,100 TEU and USD 7,832 for 1,700 TEU vessels.</p>	

New ConTex Development

Vessel type	Evaluated Period	Today 12.10.17	Week-on-Week		Month-on-Month			Year-on-Year				
			05.10.17	Change	Change	12.09.17	Change	Change	11.10.16	Change	Change	
New ConTex*		401	401	0	↔	0,0%	397	4	1,0%	310	91	29,4%
New ConTex	1100 TEU	\$6.700	\$6.666	\$34	↔	0,5%	\$6.611	\$89	1,3%	\$6.587	113	1,7%
	1700 TEU	\$8.160	\$8.104	\$56	↔	0,7%	\$7.832	\$328	4,2%	\$6.760	1.400	20,7%
	2500 TEU	\$9.842	\$9.858	-\$16	↔	-0,2%	\$9.684	\$158	1,6%	\$6.934	2.908	41,9%
	2700 TEU	\$10.371	\$10.372	-\$1	↔	0,0%	\$10.439	-\$68	-0,7%	\$7.155	3.216	44,9%
	3500 TEU	\$9.616	\$9.691	-\$75	↔	-0,8%	\$9.589	\$27	0,3%	\$6.860	2.756	40,2%
	4250 TEU	\$9.991	\$10.142	-\$151	↔	-1,5%	\$10.410	-\$419	-4,0%	\$6.790	3.201	47,1%
	2500 TEU	\$8.837	\$8.815	\$22	↔	0,2%	\$8.721	\$116	1,3%	\$5.719	3.118	54,5%
	2700 TEU	\$9.342	\$9.349	-\$7	↔	-0,1%	\$9.429	-\$87	-0,9%	\$6.127	3.215	52,5%
	3500 TEU	\$8.313	\$8.371	-\$58	↔	-0,7%	\$8.275	\$38	0,5%	\$5.470	2.843	52,0%
	4250 TEU	\$8.624	\$8.842	-\$218	↓	-2,5%	\$8.926	-\$302	-3,4%	\$4.567	4.057	88,8%



Disclaimer

The brand NewConTex is copyrighted by Vereinigung Hamburger Schiffsmakler und Schiffsagenten e.V. ("VHSS e.V.") and is protected by law. The NewConTex may be published only with the source reference © VHSS e.V. It is distributed to the general public for information purposes only and cannot be relied upon as a trading recommendation and does not constitute a solicitation to trade. The reported information is obtained from market sources. While every effort has been made to ensure the accuracy and the completeness of the NewConTex, VHSS e.V. makes no representations, conditions or warranties of any kind, express or implied, about the completeness, accuracy, reliability, or suitability of the NewConTex. Any reliance you place on the NewConTex is therefore strictly at your own risk. Neither VHSS e.V. nor any of its subsidiaries or affiliates nor any employee of the foregoing shall be liable or have any responsibility for any loss, liability or damage, cost or expense including without limitation, indirect or consequential loss or damage, or any loss or damage whatsoever arising from loss of data or profits arising out of, or in connection with, the use of and the reliance on the NewConTex, save for death or personal injury arising from VHSS e.V. negligence and fraudulent misrepresentation that cannot, under German law, be excluded.