



## New ConTex Container Ship Time Charter Assessment Index

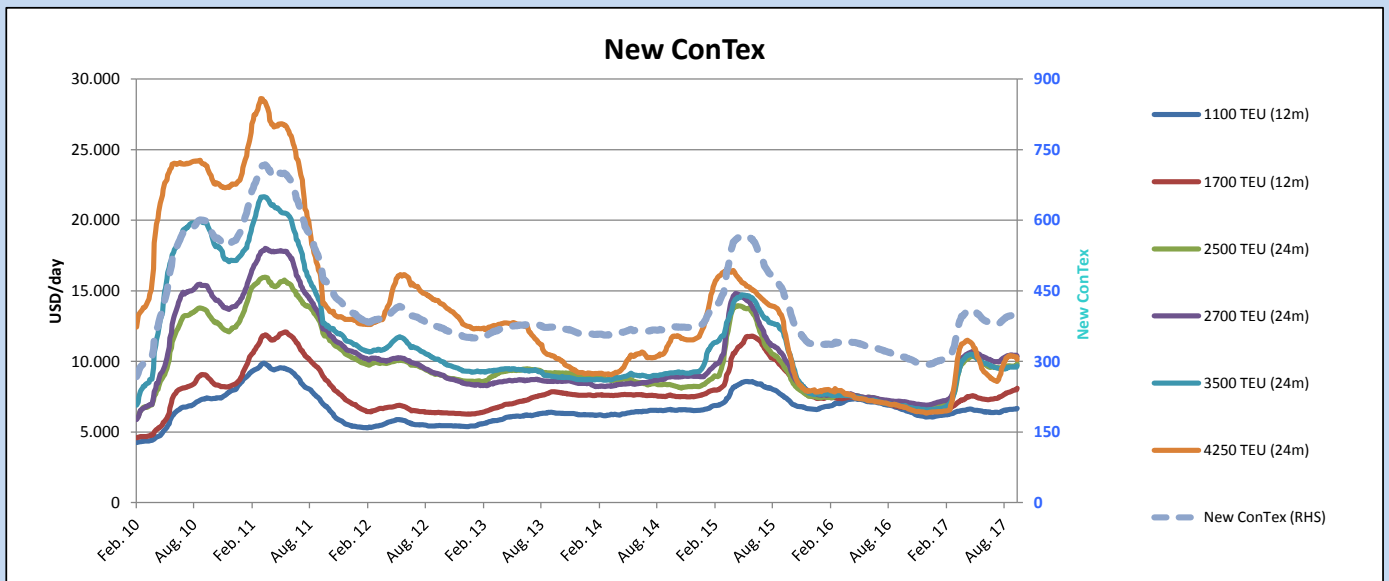
New ConTex*		401	
05.10.17		12 mos	24 mos
Gearless	1100 TEU	\$6.666	n.a.
	1700 TEU	\$8.104	
	2500 TEU	\$8.815	\$9.858
Geared	2700 TEU	\$9.349	\$10.372
	3500 TEU	\$8.371	\$9.691
	4250 TEU	\$8.842	\$10.142

Legend		
↑	up	+ 2% or more
↗	steady up	from +1% to +1,9%
→	steady	+/- 1%
↘	steady down	from -1% to -1,9%
↓	down	- 2% or less

\*New ConTex evaluation is EXCLUDING  
2500/2700/3500/4250 TEU groups for  
12 months period

New ConTex-Commentary - issued:	05.10.17
<p>The New ConTex remains stable and during the last week as the index improved one point now to 401. Almost all segments move sideways as they are just marginally up or down compared to last week. This shows that the supply and demand is basically balanced at the moment. Even on a month on month basis the changes are less than 2% on almost all segments/sizes except the 1700 Teu geared size for the 12 months evaluation which improved 4,1%, i.e. usd 322 during the past month evaluation.</p> <p>Obviously this weeks general activity was a bit slower due to national holidays in China, but as aforesaid there has been no effect visible on the index evaluations during the past week. Now having entered the last quarter of the year it will be very interesting to see what the rest of the year will bring to all of us. A year ago the market during the month just before the Eisbein Dinner on the first Friday in November slightly lost a bit by 7 points (2,3%) on the Index, but at that time the New ConTex was about 90 points less to what we have now.</p>	

		New ConTex Development											
Vessel type	Evaluated Period	Today	Week-on-Week		Month-on-Month			Year-on-Year					
			05.10.17	28.09.17	Change	05.09.17	Change	04.10.16	Change	Change			
<b>New ConTex*</b>		<b>401</b>	400	1	↔	0,3%	395	6	1,5%	311	90	28,9%	
New ConTex	12 mos	1100 TEU	\$6.666	\$6.626	\$40	↗	0,6%	\$6.571	\$95	1,4%	\$6.626	40	0,6%
		1700 TEU	\$8.104	\$7.981	\$123	↗	1,5%	\$7.782	\$322	4,1%	\$6.768	1.336	19,7%
		2500 TEU	\$9.858	\$9.691	\$167	↗	1,7%	\$9.665	\$193	2,0%	\$6.967	2.891	41,5%
	24 mos	2700 TEU	\$10.372	\$10.427	-\$55	↘	-0,5%	\$10.422	-\$50	-0,5%	\$7.171	3.201	44,6%
		3500 TEU	\$9.691	\$9.606	\$85	↗	0,9%	\$9.529	\$162	1,7%	\$6.843	2.848	41,6%
		4250 TEU	\$10.142	\$10.331	-\$189	↘	-1,8%	\$10.277	-\$135	-1,3%	\$6.815	3.327	48,8%
12 mos	2500 TEU	\$8.815	\$8.720	\$95	↗	1,1%	\$8.711	\$104	1,2%	\$5.752	3.063	53,3%	
	2700 TEU	\$9.349	\$9.370	-\$21	↘	-0,2%	\$9.390	-\$41	-0,4%	\$6.091	3.258	53,5%	
	3500 TEU	\$8.371	\$8.378	-\$7	↘	-0,1%	\$8.181	\$190	2,3%	\$5.405	2.966	54,9%	
	4250 TEU	\$8.842	\$8.988	-\$146	↘	-1,6%	\$8.694	\$148	1,7%	\$4.596	4.246	92,4%	



Disclaimer

The brand NewConTex is copyrighted by Vereinigung Hamburger Schiffsmakler und Schiffsagenten e. V. ("VHSS e.V.") and is protected by law. The NewConTex may be published only with the source reference © VHSS e.V. It is distributed to the general public for information purposes only and cannot be relied upon as a trading recommendation and does not constitute a solicitation to trade. The reported information is obtained from market sources. While every effort has been made to ensure the accuracy and the completeness of the NewConTex, VHSS e.V. makes no representations, conditions or warranties of any kind, express or implied, about the completeness, accuracy, reliability, or suitability of the NewConTex. Any reliance you place on the NewConTex is therefore strictly at your own risk. Neither VHSS e.V. nor any of its subsidiaries or affiliates nor any employee of the foregoing shall be liable or have any responsibility for any loss, liability or damage, cost or expense including without limitation, indirect or consequential loss or damage, or any loss or damage whatsoever arising from loss of data or profits arising out of, or in connection with, the use of and the reliance on the NewConTex, save for death or personal injury arising from VHSS e.V. negligence and fraudulent misrepresentation that cannot, under German law, be excluded.