



New ConTex Container Ship Time Charter Assessment Index

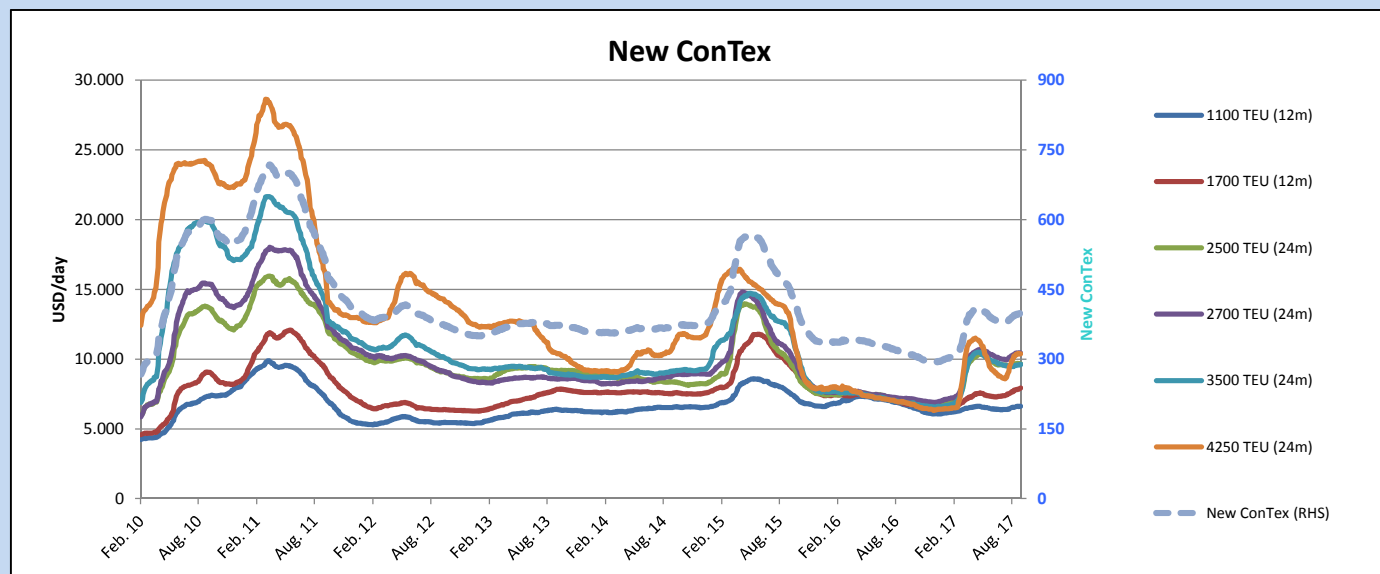
New ConTex*		398	
21.09.17		12 mos	24 mos
Gearless	1100 TEU	\$6.609	n.a.
	1700 TEU	\$7.933	
	2500 TEU	\$8.700	\$9.660
Gearless	2700 TEU	\$9.403	\$10.423
	3500 TEU	\$8.324	\$9.617
	4250 TEU	\$8.997	\$10.384

Legend		
↑	up	+ 2% or more
↗	steady up	from +1% to +1,9%
→	steady	+/- 1%
↘	steady down	from -1% to -1,9%
↓	down	- 2% or less

*New ConTex evaluation is EXCLUDING
2500/2700/3500/4250 TEU groups for
12 months period

New ConTex-Commentary - issued:		21.09.17
Autumn has finally arrived and we have seen that the market was sustainable on most of the sizes. Therefore the New ConTex "only" increased by 1 point compared to last week.		
In the segment of 1100 TEU was some activity and the rates increased a bit, not much, but at least they increased. Especially the economical 1100 TEU vessels managed to get in average USD 200 per day more than last done.		
The 1700 TEU segment is most sustainable and the periods which have been fixed will bring the vessels into 2018 and even over Chinese New Year. The modern and economical 1700 TEU vessels are still getting USD low/mid 9k per day, which needs to be seen as a positive sign.		
In the segment of 2700-2800 TEU there is still appetite from Charterers and the rates in Asia are unchanged. Better and modern designs are still manage to get mid USD 9000 per day and in general there are hardly to find any spot vessels world wide of this size.		
Even in the segment of 4500 TEU the rates and the periods which have been fixed during this week are more or less unchanged and compared to some months ago, there are not many spot vessels in the market.		
All in all it looks like the market is much more sustainable as most of us did expect couple of months ago. It needs to be seen how this will be during October, where we have in Asia the Golden Week, where traditional some vessel are getting redelivered by Charterers.		

			New ConTex Development								
Vessel type	Evaluated Period	Today	Week-on-Week			Month-on-Month			Year-on-Year		
		21.09.17	14.09.17	Change	Change	22.08.17	Change	Change	20.09.16	Change	Change
New ConTex*		398	397	1	➡ 0,3%	388	10	2,6%	314	84	26,8%
New ConTex	1100 TEU	12 mos	\$6.609	\$6.604	\$5 ➡ 0,1%	\$6.501	\$108	1,7%	\$6.737	-128	-1,9%
	1700 TEU		\$7.933	\$7.846	\$87 ➡ 1,1%	\$7.612	\$321	4,2%	\$6.812	1.121	16,5%
	2500 TEU		\$9.660	\$9.663	-\$3 ➡ 0,0%	\$9.576	\$84	0,9%	\$6.992	2.668	38,2%
	2700 TEU	24 mos	\$10.423	\$10.460	-\$37 ➡ -0,4%	\$10.225	\$198	1,9%	\$7.176	3.247	45,2%
	3500 TEU		\$9.617	\$9.588	\$29 ➡ 0,3%	\$9.492	\$125	1,3%	\$6.903	2.714	39,3%
	4250 TEU		\$10.384	\$10.371	\$13 ➡ 0,1%	\$9.710	\$674	6,9%	\$6.915	3.469	50,2%
	2500 TEU	12 mos	\$8.700	\$8.702	-\$2 ➡ 0,0%	\$8.588	\$112	1,3%	\$5.768	2.932	50,8%
	2700 TEU		\$9.403	\$9.444	-\$41 ➡ -0,4%	\$9.217	\$186	2,0%	\$6.052	3.351	55,4%
	3500 TEU		\$8.324	\$8.315	\$9 ➡ 0,1%	\$8.102	\$222	2,7%	\$5.386	2.938	54,5%
	4250 TEU		\$8.997	\$8.959	\$38 ➡ 0,4%	\$8.100	\$897	11,1%	\$4.710	4.287	91,0%



Disclaimer

The brand NewConTex is copyrighted by Vereinigung Hamburger Schiffsmakler und Schiffsagenten e.V. ("VHSS e.V.") and is protected by law. The NewConTex may be published only with the source reference © VHSS e.V. It is distributed to the general public for information purposes only and cannot be relied upon as a trading recommendation and does not constitute a solicitation to trade. The reported information is obtained from market sources. While every effort has been made to ensure the accuracy and the completeness of the NewConTex, VHSS e.V. makes no representations, conditions or warranties of any kind, express or implied, about the completeness, accuracy, reliability, or suitability of the NewConTex. Any reliance you place on the NewConTex is therefore strictly at your own risk. Neither VHSS e.V. nor any of its subsidiaries or affiliates nor any employee of the foregoing shall be liable or have any responsibility for any loss, liability or damage, cost or expense including without limitation, indirect or consequential loss or damage, or any loss or damage whatsoever arising from loss of data or profits arising out of, or in connection with, the use of and the reliance on the NewConTex, save for death or personal injury arising from VHSS e.V. negligence and fraudulent misrepresentation that cannot, under German law, be excluded.