



## New ConTex Container Ship Time Charter Assessment Index

New ConTex*		390	
24.08.17		12 mos	24 mos
Geared	1100 TEU	\$6.526	n.a.
	1700 TEU	\$7.648	
	2500 TEU	\$8.635	\$9.587
Gearless	2700 TEU	\$9.242	\$10.249
	3500 TEU	\$8.097	\$9.471
	4250 TEU	\$8.277	\$9.859

Legend		
↑	up	+ 2% or more
↗	steady up	from +1% to +1,9%
→	steady	+/- 1 %
↘	steady down	from -1% to -1,9%
↓	down	- 2% or less

\*New ConTex evaluation is EXCLUDING  
2500/2700/3500/4250 TEU groups for  
12 months period

### New ConTex-Commentary - issued:

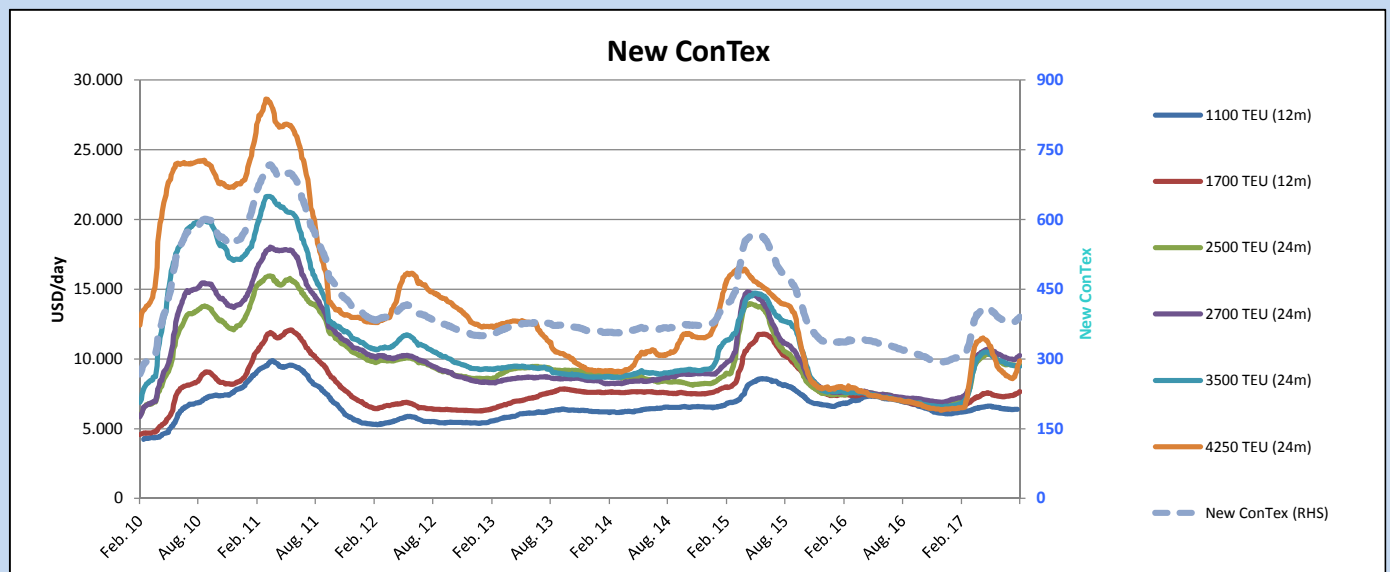
24.08.17

The New ConTex has risen for over two weeks. During this period it has increased by 11 points equaling almost 3%. While the former panamax size with approximately 4,250 teu (type 4,250) has shown the strongest increment, its smaller sister (type 3,500) is the only vessel type displayed in the index which has not followed the positive trend observed in the past two weeks. This evolution is also displayed in the New ConTex development table below, indicating that the type 4,250 increased by 13.7% in a month-on-month comparison, while type 3,500 teu decreased by 1.4%.

Overall the data reveals that the market level of the New ConTex vessel classes has risen by 21.9% in a year-on-year comparison. Thus, it reflects that the supply-demand gap has narrowed significantly in the past twelve months.

### New ConTex Development

Vessel type		Evaluated Period	Today	Week-on-Week				Month-on-Month			Year-on-Year		
			24.08.17	17.08.17	Change	Change	25.07.17	Change	Change	23.08.16	Change	Change	
New ConTex*			390	386	4	↗	1,0%	380	10	2,6%	320	70	21,9%
New ConTex	1100 TEU	12 mos	\$6.526	\$6.457	\$69	↗	1,1%	\$6.371	\$155	2,4%	\$6.897	-371	-5,4%
	1700 TEU		\$7.648	\$7.544	\$104	↗	1,4%	\$7.362	\$286	3,9%	\$7.001	647	9,2%
	2500 TEU		\$9.587	\$9.540	\$47	↗	0,5%	\$9.611	-\$24	-0,2%	\$7.105	2.482	34,9%
	2700 TEU	24 mos	\$10.249	\$10.137	\$112	↗	1,1%	\$9.987	\$262	2,6%	\$7.244	3.005	41,5%
	3500 TEU		\$9.471	\$9.513	-\$42	↘	-0,4%	\$9.606	-\$135	-1,4%	\$7.003	2.468	35,2%
	4250 TEU		\$9.859	\$9.457	\$402	↗	4,3%	\$8.670	\$1.189	13,7%	\$6.986	2.873	41,1%
	2500 TEU	12 mos	\$8.635	\$8.553	\$82	↗	1,0%	\$8.571	\$64	0,7%	\$5.868	2.767	47,2%
	2700 TEU		\$9.242	\$9.179	\$63	↗	0,7%	\$8.978	\$264	2,9%	\$6.072	3.170	52,2%
	3500 TEU		\$8.097	\$8.114	-\$17	↘	-0,2%	\$8.316	-\$219	-2,6%	\$5.424	2.673	49,3%
	4250 TEU		\$8.277	\$7.901	\$376	↗	4,8%	\$7.144	\$1.133	15,9%	\$4.908	3.369	68,6%



#### Disclaimer

The brand NewConTex is copyrighted by Vereinigung Hamburger Schiffsmakler und Schiffsagenten e.V. ("VHSS e.V.") and is protected by law. The NewConTex may be published only with the source reference © VHSS e.V. It is distributed to the general public for information purposes only and cannot be relied upon as a trading recommendation and does not constitute a solicitation to trade. The reported information is obtained from market sources. While every effort has been made to ensure the accuracy and the completeness of the NewConTex, VHSS e.V. makes no representations, conditions or warranties of any kind, express or implied, about the completeness, accuracy, reliability, or suitability of the NewConTex. Any reliance you place on the NewConTex is therefore strictly at your own risk. Neither VHSS e.V. nor any of its subsidiaries or affiliates nor any employee of the foregoing shall be liable or have any responsibility for any loss, liability or damage, cost or expense including without limitation, indirect or consequential loss or damage, or any loss or damage whatsoever arising from loss of data or profits arising out of, or in connection with, the use of and the reliance on the NewConTex, save for death or personal injury arising from VHSS e.V. negligence and fraudulent misrepresentation that cannot, under German law, be excluded.