



New ConTex Container Ship Time Charter Assessment Index

New ConTex*		381	
10.08.17		12 mos	24 mos
Gearless	1100 TEU	\$6.385	n.a.
	1700 TEU	\$7.488	
	2500 TEU	\$8.527	
Gearless	2700 TEU	\$8.993	\$9.533
	3500 TEU	\$8.214	\$9.504
	4250 TEU	\$7.254	\$8.896

Legend		
↑	up	+ 2% or more
↗	steady up	from +1% to +1,9%
→	steady	+/- 1%
↘	steady down	from -1% to -1,9%
↓	down	- 2% or less

*New ConTex evaluation is EXCLUDING 2500/2700/3500/4250 TEU groups for 12 months period

New ConTex-Commentary - issued:	10.08.17
--	-----------------

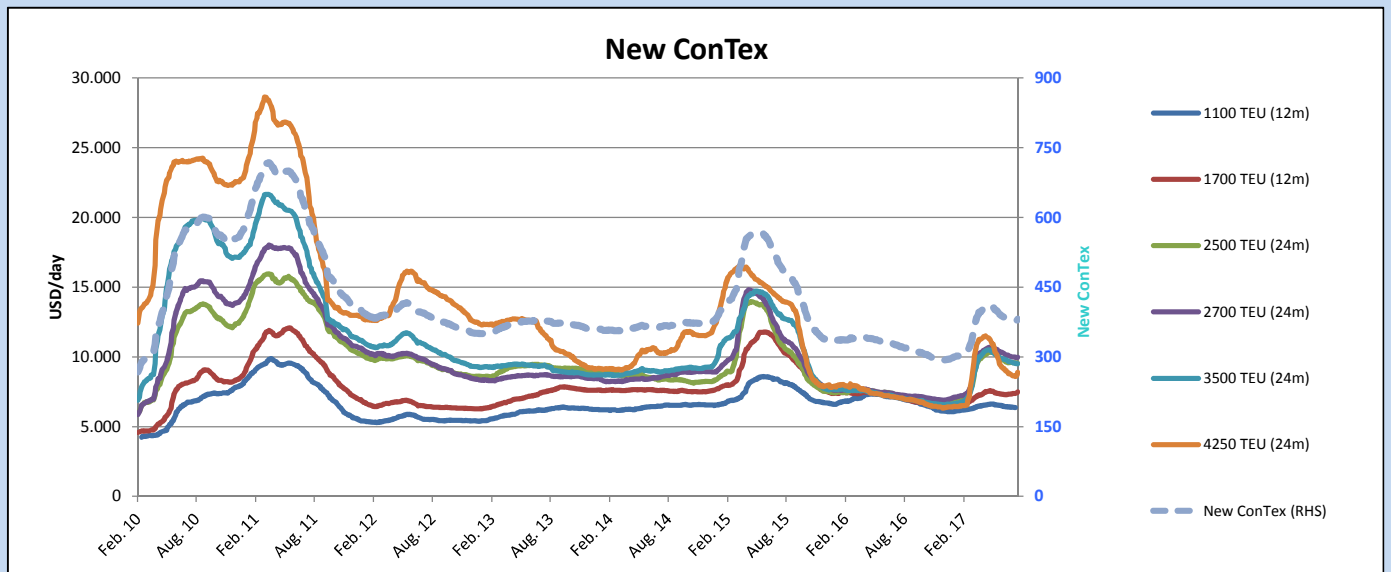
While it is still difficult to find the summer in Germany it is more or less the same in the container segment where the "usual summer break" did not really happened. Various sizes have seen a positive demand and charterers are invited to pay higher t/c rates.

As described last week already in the larger segments charterers appetite remains high and owners can sometimes choose between various opportunities. Also normal period lengths can be discussed which is compared to what we have seen a good signal.

Apart from the 4250 TEU segment (plus 3,6%) also tonnage of around 1700 TEU nominal has seen some positive trend with an increase of 1,4 percent.

New ConTex moved up by 2 points, now at 381.

Vessel type		Evaluated Period	New ConTex Development									
			Today 10.08.17	Week-on-Week		Month-on-Month		Year-on-Year				
			03.08.17	Change	Change	11.07.17	Change	Change	09.08.16	Change	Change	
New ConTex*			381	379	2	↗ 0,5%	382	-1	-0,3%	323	58	18,0%
New ConTex	1100 TEU	12 mos	\$6.385	\$6.393	-\$8	↘ -0,1%	\$6.414	-\$29	-0,5%	\$6.975	-\$590	-8,5%
	1700 TEU		\$7.488	\$7.381	\$107	↗ 1,4%	\$7.297	\$191	2,6%	\$7.097	391	5,5%
	2500 TEU	24 mos	\$9.533	\$9.576	-\$43	↘ -0,4%	\$9.570	-\$37	-0,4%	\$7.232	2.301	31,8%
	2700 TEU		\$9.961	\$9.979	-\$18	↘ -0,2%	\$10.134	-\$173	-1,7%	\$7.284	2.677	36,8%
	3500 TEU		\$9.504	\$9.535	-\$31	↘ -0,3%	\$9.728	-\$224	-2,3%	\$7.065	2.439	34,5%
	4250 TEU		\$8.896	\$8.586	\$310	↗ 3,6%	\$8.887	\$9	0,1%	\$7.063	1.833	26,0%
2500 TEU	12 mos	\$8.527	\$8.541	-\$14	↘ -0,2%	\$8.569	-\$42	-0,5%	\$5.946	2.581	43,4%	
1700 TEU		\$8.993	\$8.951	\$42	↗ 0,5%	\$9.091	-\$98	-1,1%	\$6.105	2.888	47,3%	
3500 TEU		\$8.214	\$8.251	-\$37	↘ -0,4%	\$8.508	-\$294	-3,5%	\$5.488	2.726	49,7%	
4250 TEU		\$7.254	\$7.068	\$186	↗ 2,6%	\$7.392	-\$138	-1,9%	\$4.973	2.281	45,9%	



Disclaimer

The brand NewConTex is copyrighted by Vereinigung Hamburger Schiffsmakler und Schiffsagenten e.V. ("VHSS e.V.") and is protected by law. The NewConTex may be published only with the source reference © VHSS e.V. It is distributed to the general public for information purposes only and cannot be relied upon as a trading recommendation and does not constitute a solicitation to trade. The reported information is obtained from market sources. While every effort has been made to ensure the accuracy and the completeness of the NewConTex, VHSS e.V. makes no representations, conditions or warranties of any kind, express or implied, about the completeness, accuracy, reliability, or suitability of the NewConTex. Any reliance you place on the NewConTex is therefore strictly at your own risk. Neither VHSS e.V. nor any of its subsidiaries or affiliates nor any employee of the foregoing shall be liable or have any responsibility for any loss, liability or damage, cost or expense including without limitation, indirect or consequential loss or damage, or any loss or damage whatsoever arising from loss of data or profits arising out of, or in connection with, the use of and the reliance on the NewConTex, save for death or personal injury arising from VHSS e.V. negligence and fraudulent misrepresentation that cannot, under German law, be excluded.