



New ConTex Container Ship Time Charter Assessment Index

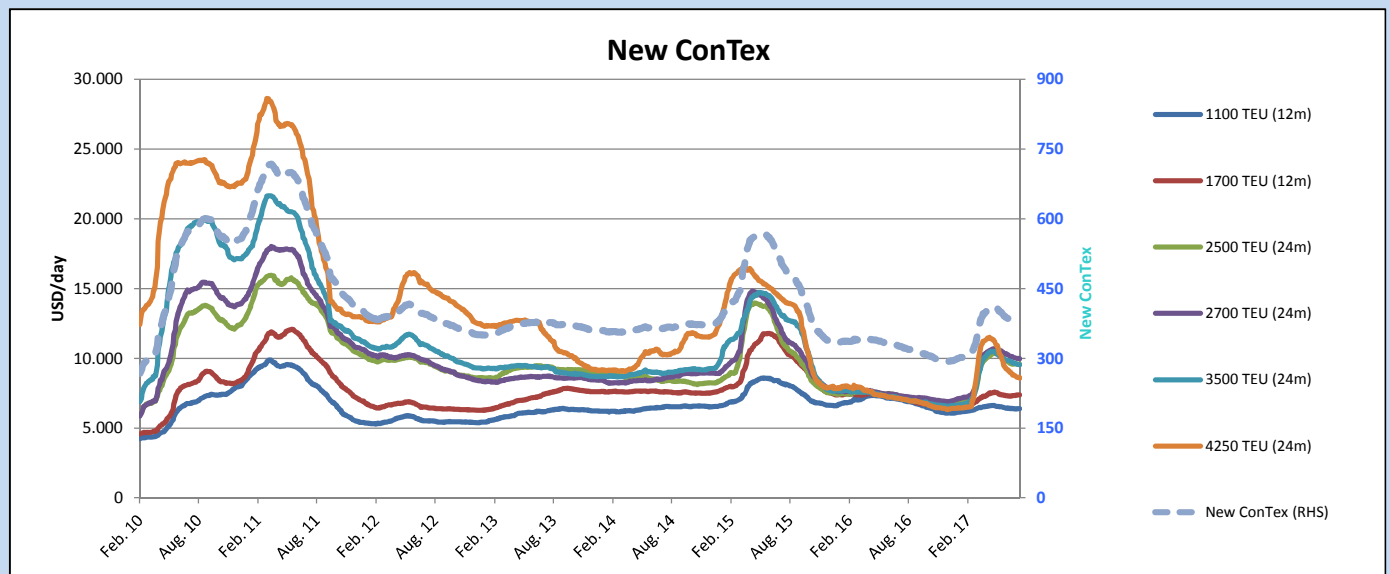
New ConTex*		379	
03.08.17		12 mos	24 mos
Geared	1100 TEU	\$6.393	n.a.
	1700 TEU	\$7.381	
	2500 TEU	\$8.541	\$9.576
Gearless	2700 TEU	\$8.951	\$9.979
	3500 TEU	\$8.251	\$9.535
	4250 TEU	\$7.068	\$8.586

Legend		
↑	up	+ 2% or more
↗	steady up	from +1% to +1,9%
→	steady	+/- 1 %
↘	steady down	from -1% to -1,9%
↓	down	- 2% or less

*New ConTex evaluation is EXCLUDING 2500/2700/3500/4250 TEU groups for 12 months period

New ConTex-Commentary - issued:	03.08.17
<p>Despite some minor drops in all New ConTex groups the Container Charter Market seems to have bottomed out during early August.</p> <p>In the Post-Panamax segment (not listed in the New ConTex) there is no prompt tonnage available and rates are clearly on the rise. The demand for extra loaders trickles down to Wide-Beam Panamax and to conventional Panamax.</p> <p>The sentiment is changing already and next weeks figures are likely to show some upward trend in some segments.</p> <p>The number of ships available for charter in the near future has shrunk significantly over the last weeks and the Alphaliner Idle numbers also show a rapid decrease.</p>	

New ConTex Development													
Vessel type	Evaluated Period	Today 03.08.17	Week-on-Week		Month-on-Month			Year-on-Year					
			27.07.17	Change	Change	04.07.17	Change	Change	02.08.16	Change	Change		
New ConTex*		379	380	-1	↔	-0,3%	384	-5	-1,3%	325	54	16,6%	
New ConTex	1100 TEU	12 mos	\$6.393	\$6.391	\$2	↔	0,0%	\$6.416	-\$23	-0,4%	\$7.030	-637	-9,1%
	1700 TEU		\$7.381	\$7.367	\$14	↗	0,2%	\$7.292	\$89	1,2%	\$7.128	253	3,5%
	2500 TEU	24 mos	\$9.576	\$9.585	-\$9	↔	-0,1%	\$9.654	-\$78	-0,8%	\$7.251	2.325	32,1%
	2700 TEU		\$9.979	\$9.993	-\$14	↔	-0,1%	\$10.155	-\$176	-1,7%	\$7.298	2.681	36,7%
	3500 TEU		\$9.535	\$9.581	-\$46	↔	-0,5%	\$9.808	-\$273	-2,8%	\$7.093	2.442	34,4%
	4250 TEU		\$8.586	\$8.646	-\$60	↔	-0,7%	\$9.021	-\$435	-4,8%	\$7.076	1.510	21,3%
2500 TEU	12 mos	\$8.541	\$8.550	-\$9	↔	-0,1%	\$8.697	-\$156	-1,8%	\$5.979	2.562	42,8%	
2700 TEU		\$8.951	\$8.968	-\$17	↔	-0,2%	\$9.172	-\$221	-2,4%	\$6.118	2.833	46,3%	
3500 TEU		\$8.251	\$8.311	-\$60	↔	-0,7%	\$8.588	-\$337	-3,9%	\$5.543	2.708	48,9%	
4250 TEU		\$7.068	\$7.144	-\$76	↔	-1,1%	\$7.571	-\$503	-6,6%	\$4.975	2.093	42,1%	



Disclaimer

The brand NewConTex is copyrighted by Vereinigung Hamburger Schiffsmakler und Schiffsagenten e.V. ("VHSS e.V.") and is protected by law. The NewConTex may be published only with the source reference © VHSS e.V. It is distributed to the general public for information purposes only and cannot be relied upon as a trading recommendation and does not constitute a solicitation to trade. The reported information is obtained from market sources. While every effort has been made to ensure the accuracy and the completeness of the NewConTex, VHSS e.V. makes no representations, conditions or warranties of any kind, express or implied, about the completeness, accuracy, reliability, or suitability of the NewConTex. Any reliance you place on the NewConTex is therefore strictly at your own risk. Neither VHSS e.V. nor any of its subsidiaries or affiliates nor any employee of the foregoing shall be liable or have any responsibility for any loss, liability or damage, cost or expense including without limitation, indirect or consequential loss or damage, or any loss or damage whatsoever arising from loss of data or profits arising out of, or in connection with, the use of and the reliance on the NewConTex, save for death or personal injury arising from VHSS e.V. negligence and fraudulent misrepresentation that cannot, under German law, be excluded.