



New ConTex Container Ship Time Charter Assessment Index

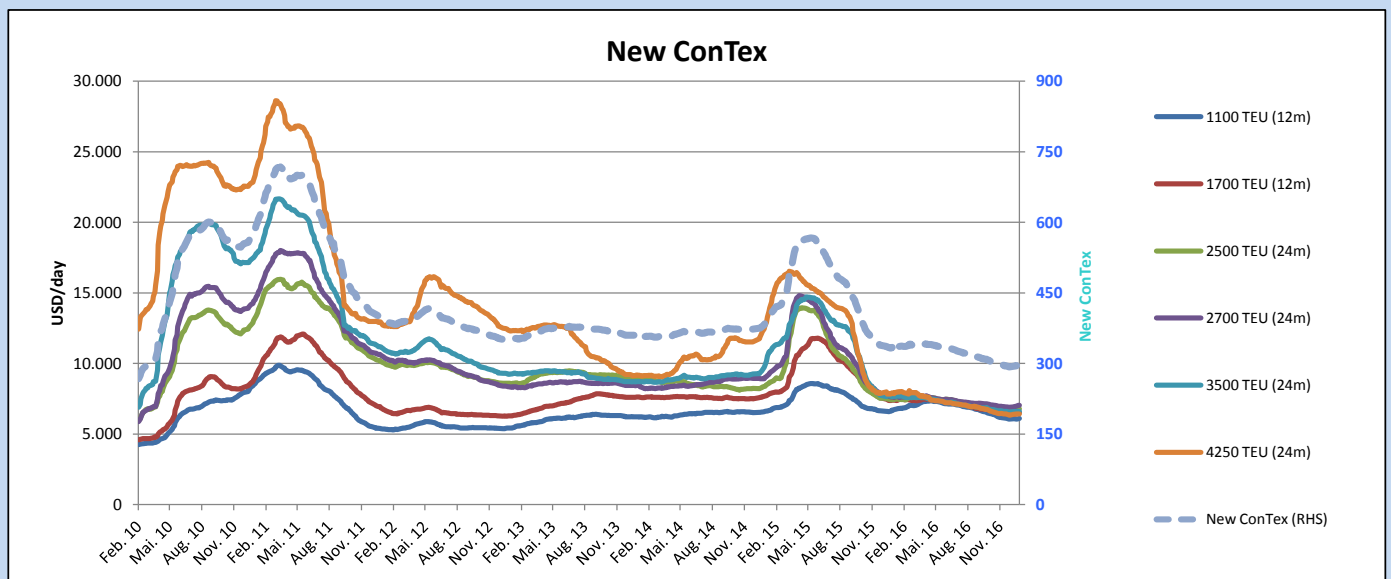
New ConTex*		298
19.01.17		
Geared	1100 TEU	\$6.113
	1700 TEU	\$6.507
	2500 TEU	\$5.823
Gearless	2700 TEU	\$6.153
	3500 TEU	\$5.357
	4250 TEU	\$4.201

Legend		
↑	up	+ 2% or more
↗	steady up	from +1% to +1,9%
→	steady	+/- 1 %
↘	steady down	from -1% to -1,9%
↓	down	- 2% or less

*New ConTex evaluation is EXCLUDING
2500/2700/3500/4250 TEU groups for
12 months period

New ConTex-Commentary - issued:		19.01.17
<p>There are positive signs from most of the New ConTex groups and the Index reflects this by improving by 2 points and ending week 03 with 298.</p> <p>Especially the 1700 and 2500 TEU segments moved upwards by more than 1% fuelled by good demand for this time of the year. The number of fixtures is encouraging in combination with a lot of charter vessels being sold for demolition. The Charterers had less choice for their TC requirements and the agreed TC periods have become less flexible.</p> <p>Surprisingly for some, even the Panamax group has gone above the USD 4,200 mark basis a 12-month employment. Let's remember that in November and December some Panamax Charters were agreed at only USD 3,900.</p> <p>The Lunar New Year holidays will dampen the Chartering activities in Asia for about two weeks, but expectations are that thereafter the container market should improve further.</p> <p>2016 demolition of containership capacity should have reached around 670,000 TEU (nearly 200 vessels), if the demo activity remains on this high level during 2017, the supply/demand ration will be much healthier for most containership segments and charter levels will improve accordingly.</p>		

			New ConTex Development										
Vessel type	Evaluated Period	Today	Week-on-Week				Month-on-Month			Year-on-Year			
		19.01.17	12.01.17	Change	Change	20.12.16	Change	Change	19.01.16	Change	Change		
New ConTex*		298	296	2	➡	0,7%	293	5	1,7%	333	-35	-10,5%	
New ConTex	1100 TEU	12 mos	\$6.113	\$6.064	\$49	➡	0,8%	\$6.071	\$42	0,7%	\$6.620	-507	-7,7%
	1700 TEU		\$6.507	\$6.436	\$71	➡	1,1%	\$6.397	\$110	1,7%	\$7.383	-876	-11,9%
	2500 TEU		\$6.777	\$6.704	\$73	➡	1,1%	\$6.586	\$191	2,9%	\$7.428	-651	-8,8%
	2700 TEU	24 mos	\$7.042	\$6.987	\$55	➡	0,8%	\$6.899	\$143	2,1%	\$7.632	-590	-7,7%
	3500 TEU		\$6.614	\$6.596	\$18	➡	0,3%	\$6.568	\$46	0,7%	\$7.671	-1.057	-13,8%
	4250 TEU		\$6.417	\$6.423	-\$6	➡	-0,1%	\$6.356	\$61	1,0%	\$7.862	-1.445	-18,4%
	2500 TEU	12 mos	\$5.823	\$5.733	\$90	➡	1,6%	\$5.547	\$276	5,0%	\$6.030	-207	-3,4%
2700 TEU	\$6.153		\$6.087	\$66	➡	1,1%	\$5.963	\$190	3,2%	\$6.242	-89	-1,4%	
3500 TEU	\$5.357		\$5.324	\$33	➡	0,6%	\$5.319	\$38	0,7%	\$5.961	-604	-10,1%	
4250 TEU	\$4.201		\$4.209	-\$8	➡	-0,2%	\$4.146	\$55	1,3%	\$5.843	-1.642	-28,1%	



Disclaimer

The brand NewConTex is copyrighted by Vereinigung Hamburger Schiffsmakler und Schiffsagenten e.V. ("VHSS e.V.") and is protected by law. The NewConTex may be published only with the source reference © VHSS e.V. It is distributed to the general public for information purposes only and cannot be relied upon as a trading recommendation and does not constitute a solicitation to trade. The reported information is obtained from market sources. While every effort has been made to ensure the accuracy and the completeness of the NewConTex, VHSS e.V. makes no representations, conditions or warranties of any kind, express or implied, about the completeness, accuracy, reliability, or suitability of the NewConTex. Any reliance you place on the NewConTex is therefore strictly at your own risk. Neither VHSS e.V. nor any of its subsidiaries or affiliates nor any employee of the foregoing shall be liable or have any responsibility for any loss, liability or damage, cost or expense including without limitation, indirect or consequential loss or damage, or any loss or damage whatsoever arising from loss of data or profits arising out of, or in connection with, the use of and the reliance on the NewConTex, save for death or personal injury arising from VHSS e.V. negligence and fraudulent misrepresentation that cannot, under German law, be excluded.