



New ConTex Container Ship Time Charter Assessment Index

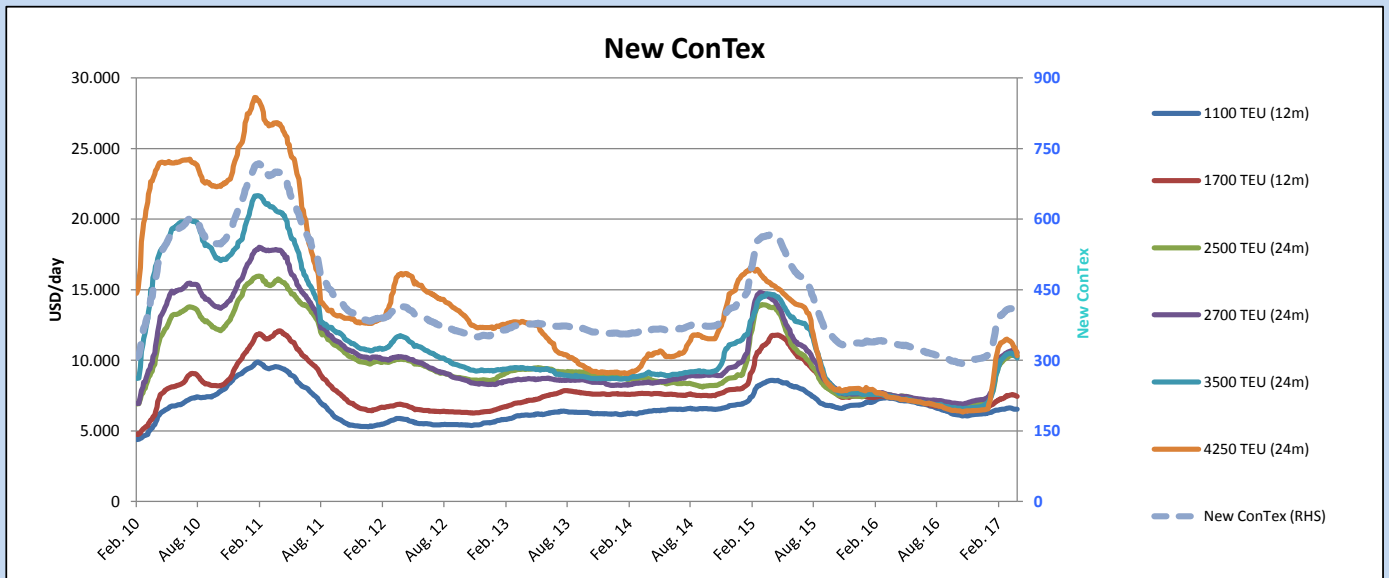
New ConTex*		381	
20.07.17		12 mos	24 mos
Gearless	1100 TEU	\$6.377	n.a.
	1700 TEU	\$7.339	
	2500 TEU	\$8.562	
Gearless	2700 TEU	\$9.011	\$10.030
	3500 TEU	\$8.372	\$9.638
	4250 TEU	\$7.231	\$8.745

Legend		
↑	up	+ 2% or more
↗	steady up	from +1% to +1,9%
→	steady	+/- 1%
↘	steady down	from -1% to -1,9%
↓	down	- 2% or less

*New ConTex evaluation is EXCLUDING 2500/2700/3500/4250 TEU groups for 12 months period

New ConTex-Commentary - issued:	20.07.17
<p>Although the integration of large newbuildings which is indirectly impacting the Charter Market, Owners remain hopeful that the continued tightening of prompt available ships will finally result in more substantial rate increases.</p> <p>For the time being the New ConTex is drifting in all segments sideways on the same ratelevel as last week.</p> <p>On a month on month basis there is a slight downward trend from 388 to 381 points with the biggest jump again reported in the 4250 TEU size of -8,9% for 12 month and -6.4% for 24 month followed by -5.3% for 12 month and -2.5% for 24 month in the 3500 teu segment.</p> <p>The trend in the mid sizes becomes marginal with only -4.2% resp. -3.5% for 12 month and just -2.7% and -2.4% for 24 month for the 2700 and 2500 teu sizes and it has to be seen if this slight weakening is going to continue despite it looks as if only a view vessels in this segment coming available during the forthcoming weeks.</p> <p>In the 1100 and 1700 teu segment there are no real reportable changes.</p>	

		New ConTex Development										
Vessel type	Evaluated Period	Today	Week-on-Week		Month-on-Month			Year-on-Year				
		20.07.17	13.07.17	Change	Change	20.06.17	Change	Change	19.07.16	Change	Change	
New ConTex*		381	381	0	→	0,0%	389	-8	-2,1%	329	52	15,8%
New ConTex	1100 TEU	\$6.377	\$6.385	-\$8	→	-0,1%	\$6.445	-\$68	-1,1%	\$7.105	-728	-10,2%
	1700 TEU	\$7.339	\$7.333	\$6	→	0,1%	\$7.326	\$13	0,2%	\$7.250	89	1,2%
	2500 TEU	\$9.596	\$9.569	\$27	→	0,3%	\$9.833	-\$237	-2,4%	\$7.384	2.212	30,0%
	2700 TEU	\$10.030	\$10.084	-\$54	→	-0,5%	\$10.312	-\$282	-2,7%	\$7.368	2.662	36,1%
	3500 TEU	\$9.638	\$9.671	-\$33	→	-0,3%	\$9.885	-\$247	-2,5%	\$7.227	2.411	33,4%
	4250 TEU	\$8.745	\$8.811	-\$66	→	-0,7%	\$9.342	-\$597	-6,4%	\$7.155	1.590	22,2%
	2500 TEU	\$8.562	\$8.565	-\$3	→	0,0%	\$8.872	-\$310	-3,5%	\$6.045	2.517	41,6%
	2700 TEU	\$9.011	\$9.067	-\$56	→	-0,6%	\$9.409	-\$398	-4,2%	\$6.202	2.809	45,3%
	3500 TEU	\$8.372	\$8.443	-\$71	→	-0,8%	\$8.836	-\$464	-5,3%	\$5.505	2.867	52,1%
	4250 TEU	\$7.231	\$7.323	-\$92	↘	-1,3%	\$7.936	-\$705	-8,9%	\$5.045	2.186	43,3%



Disclaimer

The brand NewConTex is copyrighted by Vereinigung Hamburger Schiffsmakler und Schiffsagenten e. V. ("VHSS e.V.") and is protected by law. The NewConTex may be published only with the source reference © VHSS e.V. It is distributed to the general public for information purposes only and cannot be relied upon as a trading recommendation and does not constitute a solicitation to trade. The reported information is obtained from market sources. While every effort has been made to ensure the accuracy and the completeness of the NewConTex, VHSS e.V. makes no representations, conditions or warranties of any kind, express or implied, about the completeness, accuracy, reliability, or suitability of the NewConTex. Any reliance you place on the NewConTex is therefore strictly at your own risk. Neither VHSS e.V. nor any of its subsidiaries or affiliates nor any employee of the foregoing shall be liable or have any responsibility for any loss, liability or damage, cost or expense including without limitation, indirect or consequential loss or damage, or any loss or damage whatsoever arising from loss of data or profits arising out of, or in connection with, the use of and the reliance on the NewConTex, save for death or personal injury arising from VHSS e.V. negligence and fraudulent misrepresentation that cannot, under German law, be excluded.