



## New ConTex Container Ship Time Charter Assessment Index

New ConTex*		383	
06.07.17		12 mos	24 mos
Geared	1100 TEU	\$6.398	n.a.
	1700 TEU	\$7.292	
	2500 TEU	\$8.629	
Gearless	2700 TEU	\$9.154	\$10.141
	3500 TEU	\$8.540	\$9.789
	4250 TEU	\$7.511	\$8.988

Legend		
↑	up	+ 2% or more
↗	steady up	from +1% to +1,9%
→	steady	+/- 1%
↘	steady down	from -1% to -1,9%
↓	down	- 2% or less

\*New ConTex evaluation is EXCLUDING  
2500/2700/3500/4250 TEU groups for  
12 months period

### New ConTex-Commentary - issued:

06.07.17

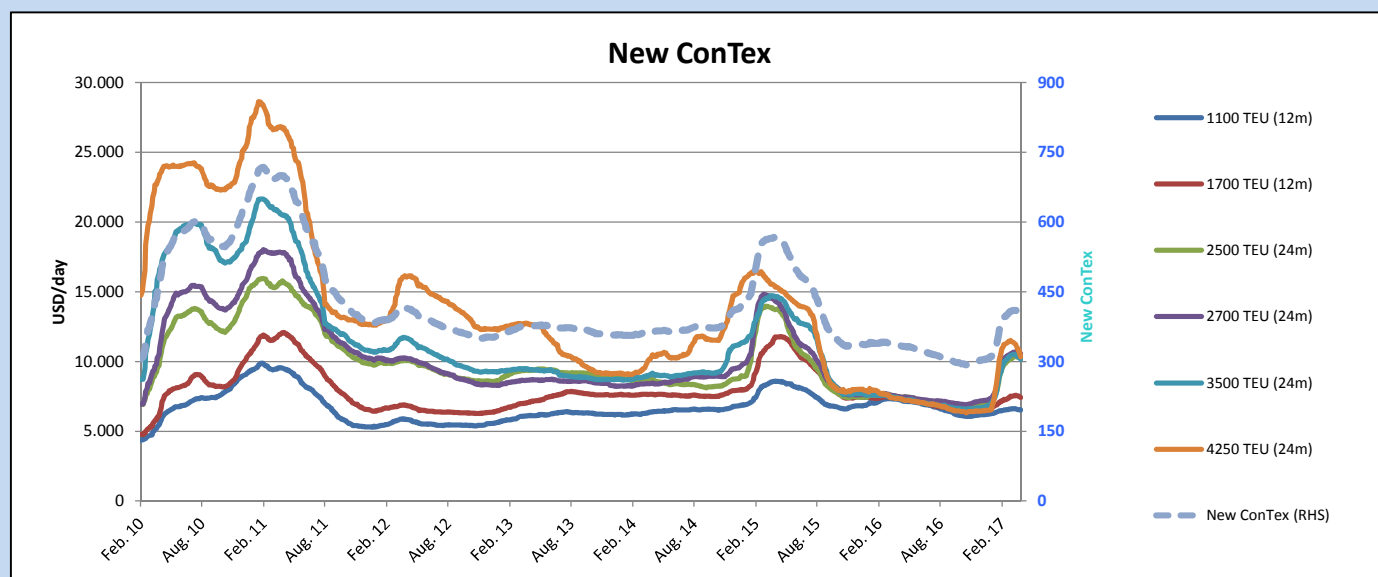
New ConTex dropped further 3 points compared to last week due to the usual low activity of the summer season as well as oversupply in some specific segments.

The bay panamax segment witnessed a further decrease of 2.5 pct on the 12 mos rate compared to last week which was expected as the ships indeed are piling up in Asia, while in Europe the same type achieve about 5-10 pct more but with more sporadic fixing. The 3,500 TEU segment stays fairly stable on limited fixing activity but clearly with charter rates having a downward trend. Gearless 2,700 TEU decreased slightly with 1.1 pct both for 12 mos and 24 mos charter, but we are still seeing ships being fixed with 9 in front. Craned 2,500 TEU vessels appear more or less stable with a drop within 1.5 pct for both 12 mos and 24 mos. Feeders around 1,700 TEU and 1,100 TEU basically managed to maintain the rate levels with only minor shifts.

Activity is in general expected to slow down during the summer and more vessels may run into prompt positions and thus softening charter rates. Still, we are presently at levels which are far better than during the same time last year.

### New ConTex Development

Vessel type		Evaluated Period	Today	Week-on-Week			Month-on-Month			Year-on-Year		
			06.07.17	29.06.17	Change	Change	06.06.17	Change	Change	05.07.16	Change	Change
New ConTex	New ConTex*		383	386	-3	➡ -0,8%	400	-17	-4,3%	332	51	15,4%
	1100 TEU	12 mos	\$6.398	\$6.436	-\$38	➡ -0,6%	\$6.522	-\$124	-1,9%	\$7.136	-738	-10,3%
	1700 TEU		\$7.292	\$7.304	-\$12	➡ -0,2%	\$7.399	-\$107	-1,4%	\$7.329	-37	-0,5%
	2500 TEU	24 mos	\$9.617	\$9.740	-\$123	➡ -1,3%	\$10.242	-\$625	-6,1%	\$7.448	2.169	29,1%
	2700 TEU		\$10.141	\$10.249	-\$108	➡ -1,1%	\$10.537	-\$396	-3,8%	\$7.430	2.711	36,5%
	3500 TEU		\$9.789	\$9.848	-\$59	➡ -0,6%	\$10.143	-\$354	-3,5%	\$7.250	2.539	35,0%
	4250 TEU		\$8.988	\$9.149	-\$161	➡ -1,8%	\$10.189	-\$1.201	-11,8%	\$7.212	1.776	24,6%
	2500 TEU	12 mos	\$8.629	\$8.749	-\$120	➡ -1,4%	\$9.310	-\$681	-7,3%	\$6.101	2.528	41,4%
	2700 TEU		\$9.154	\$9.258	-\$104	➡ -1,1%	\$9.556	-\$402	-4,2%	\$6.215	2.939	47,3%
	3500 TEU		\$8.540	\$8.669	-\$129	➡ -1,5%	\$9.002	-\$462	-5,1%	\$5.587	2.953	52,9%
4250 TEU	\$7.511		\$7.700	-\$189	⬇ -2,5%	\$8.709	-\$1.198	-13,8%	\$5.069	2.442	48,2%	



Disclaimer

The brand NewConTex is copyrighted by Vereinigung Hamburger Schiffsmakler und Schiffsagenten e.V. ("VHSS e.V.") and is protected by law. The NewConTex may be published only with the source reference © VHSS e.V. It is distributed to the general public for information purposes only and cannot be relied upon as a trading recommendation and does not constitute a solicitation to trade. The reported information is obtained from market sources. While every effort has been made to ensure the accuracy and the completeness of the NewConTex, VHSS e.V. makes no representations, conditions or warranties of any kind, express or implied, about the completeness, accuracy, reliability, or suitability of the NewConTex. Any reliance you place on the NewConTex is therefore strictly at your own risk. Neither VHSS e.V. nor any of its subsidiaries or affiliates nor any employee of the foregoing shall be liable or have any responsibility for any loss, liability or damage, cost or expense including without limitation, indirect or consequential loss or damage, or any loss or damage whatsoever arising from loss of data or profits arising out of, or in connection with, the use of and the reliance on the NewConTex, save for death or personal injury arising from VHSS e.V. negligence and fraudulent misrepresentation that cannot, under German law, be excluded.