



## New ConTex Container Ship Time Charter Assessment Index

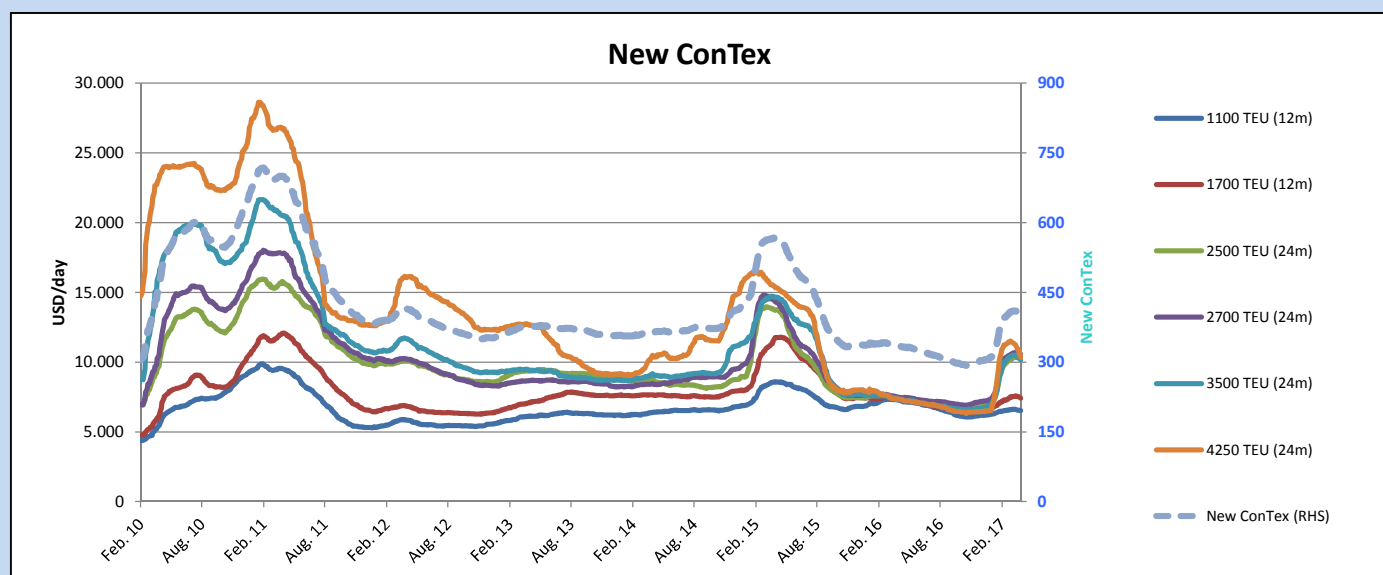
New ConTex*		388	
22.06.17		12 mos	24 mos
Gearless	1100 TEU	\$6.427	n.a.
	1700 TEU	\$7.324	n.a.
	2500 TEU	\$8.837	\$9.813
	2700 TEU	\$9.385	\$10.333
	3500 TEU	\$8.831	\$9.887
4250 TEU		\$7.846	\$9.267

Legend		
↑	up	+ 2% or more
↗	steady up	from +1% to +1,9%
→	steady	+/- 1 %
↘	steady down	from -1% to -1,9%
↓	down	- 2% or less

\*New ConTex evaluation is EXCLUDING  
2500/2700/3500/4250 TEU groups for  
12 months period

22.06.17	
<p>Summer has arrived and after sustained optimism, we are currently seeing that the market is forcing some "corrections". The New ConTex has slipped another 4 points. Slowly the traditionally most quiet period of the year for chartering has arrived and not much activity has been perceived the last week.</p> <p>The most active segment during last week was the size of 4,500 TEU and bigger, where some positive deals went through. In the segment of 2,700-2,800 TEU was not much activity at all and since some months it is the first time that vessels are without any employment for longer. One reason for this might be that the Asian based Charterers are still waiting for the delivery of their new buildings.</p> <p>The 1,700 TEU segment, is the segment where the rates are a bit more sustainable, even though the most fixtures, which took place, were for short periods. The modern and economical 1,700 TEU vessels are still getting high USD 8kdpdr / low 9kdpdr, which is still something positive.</p> <p>In the segment of the 1,100 TEU vessels it still remains unchanged in view of the activity, not much fixtures took place during last week and the rates for the 1,100 TEU vessels dropped again a bit further down.</p> <p>All in all it looks like the market is doing some "corrections" but as long the rates remain better and more healthy compared to 2016 we need to stay positive.</p>	

New ConTex Development											
Vessel type		Evaluated Period	Today	Week-on-Week		Month-on-Month			Year-on-Year		
			22.06.17	15.06.17	Change	23.05.17	Change	Change	21.06.16	Change	Change
New ConTex*			388	392	-4	407	-19	-4,7%	332	56	16,9%
New ConTex	1100 TEU	12 mos	\$6.427	\$6.492	-\$65	\$6.543	-\$116	-1,8%	\$7.149	-722	-10,1%
	1700 TEU		\$7.324	\$7.357	-\$33	\$7.538	-\$214	-2,8%	\$7.352	-28	-0,4%
	2500 TEU	24 mos	\$9.813	\$9.944	-\$131	\$10.317	-\$504	-4,9%	\$7.454	2.359	31,6%
	2700 TEU		\$10.333	\$10.378	-\$45	\$10.647	-\$314	-2,9%	\$7.456	2.877	38,6%
	3500 TEU		\$9.887	\$9.954	-\$67	\$10.336	-\$449	-4,3%	\$7.261	2.626	36,2%
	4250 TEU		\$9.267	\$9.506	-\$239	\$10.920	-\$1.653	-15,1%	\$7.223	2.044	28,3%
	2500 TEU	12 mos	\$8.837	\$8.991	-\$154	\$9.439	-\$602	-6,4%	\$6.088	2.749	45,2%
	2700 TEU		\$9.385	\$9.472	-\$87	\$9.690	-\$305	-3,1%	\$6.198	3.187	51,4%
	3500 TEU		\$8.831	\$8.896	-\$65	\$9.257	-\$426	-4,6%	\$5.635	3.196	56,7%
	4250 TEU		\$7.846	\$8.105	-\$259	\$9.306	-\$1.460	-15,7%	\$5.117	2.729	53,3%



Disclaimer

The brand NewConTex is copyrighted by Vereinigung Hamburger Schiffsmakler und Schiffsagenten e.V. ("VHSS e.V.") and is protected by law. The NewConTex may be published only with the source reference © VHSS e.V. It is distributed to the general public for information purposes only and cannot be relied upon as a trading recommendation and does not constitute a solicitation to trade. The reported information is obtained from market sources. While every effort has been made to ensure the accuracy and the completeness of the NewConTex, VHSS e.V. makes no representations, conditions or warranties of any kind, express or implied, about the completeness, accuracy, reliability, or suitability of the NewConTex. Any reliance you place on the NewConTex is therefore strictly at your own risk. Neither VHSS e.V. nor any of its subsidiaries or affiliates nor any employee of the foregoing shall be liable or have any responsibility for any loss, liability or damage, cost or expense including without limitation, indirect or consequential loss or damage, or any loss or damage whatsoever arising from loss of data or profits arising out of, or in connection with, the use of and the reliance on the NewConTex, save for death or personal injury arising from VHSS e.V. negligence and fraudulent misrepresentation that cannot, under German law, be excluded.