



New ConTex Container Ship Time Charter Assessment Index

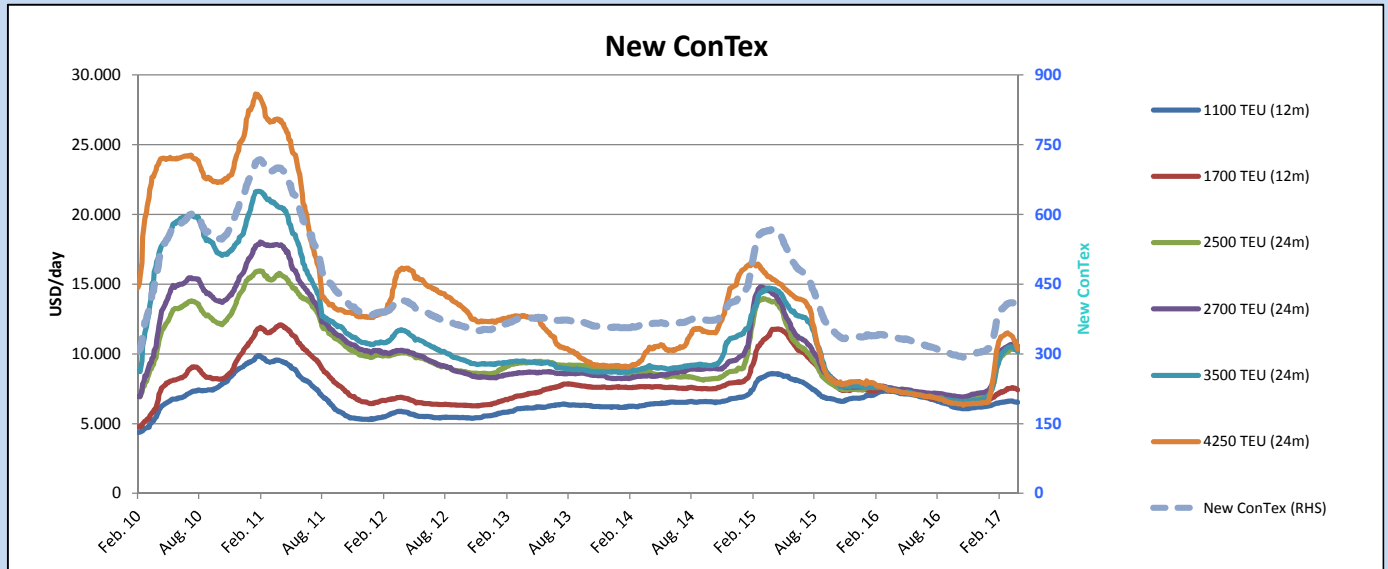
New ConTex*		398	
08.06.17		12 mos	24 mos
Gearless	1100 TEU	\$6.517	n.a.
	1700 TEU	\$7.387	
	2500 TEU	\$9.255	
Gearless	2700 TEU	\$9.521	\$10.212
	3500 TEU	\$8.997	\$10.095
	4250 TEU	\$8.631	\$10.048

Legend		
↑	up	+ 2% or more
↗	steady up	from +1% to +1,9%
→	steady	+/- 1%
↘	steady down	from -1% to -1,9%
↓	down	- 2% or less

*New ConTex evaluation is EXCLUDING 2500/2700/3500/4250 TEU groups for 12 months period

New ConTex-Commentary - issued:	08.06.17
<p>The New ConTex followed its trend of the last 2 weeks and dropped another 3 points during last week. The Index is now back below the 400 mark at 398 points, which we saw last in April this year (week 16).</p> <p>Last week all the Week-on-Week rates were already in red, but at least some (2500 and 2700 TEU) of the Month-on-Months rates still remained in black we saw that last week even these numbers slipped into red basis M-o-M.</p> <p>Mainly all sizes basis W-o-W are just showing small decreases (around/less than 1%) and only the old Panamax size of 4250 TEU is down by more than 2% in both evaluations (12 mos and 24 mos).</p> <p>We do fear that the above mentioned trend may still continue as especially the old Panamax size may likely suffer further.</p>	

		New ConTex Development									
Vessel type	Evaluated Period	Today	Week-on-Week		Month-on-Month			Year-on-Year			
		08.06.17	01.06.17	Change	Change	09.05.17	Change	Change	07.06.16	Change	Change
New ConTex*		398	401	-3	↔ -0,7%	410	-12	-2,9%	335	63	18,8%
New ConTex	1100 TEU	\$6.517	\$6.532	-\$15	↔ -0,2%	\$6.619	-\$102	-1,5%	\$7.271	-754	-10,4%
	1700 TEU	\$7.387	\$7.432	-\$45	↔ -0,6%	\$7.507	-\$120	-1,6%	\$7.424	-37	-0,5%
	2500 TEU	\$10.212	\$10.304	-\$92	↔ -0,9%	\$10.303	-\$91	-0,9%	\$7.447	2.765	37,1%
	2700 TEU	\$10.502	\$10.556	-\$54	↔ -0,5%	\$10.627	-\$125	-1,2%	\$7.467	3.035	40,6%
	3500 TEU	\$10.095	\$10.170	-\$75	↔ -0,7%	\$10.488	-\$393	-3,7%	\$7.333	2.762	37,7%
	4250 TEU	\$10.048	\$10.330	-\$282	↓ -2,7%	\$11.394	-\$1.346	-11,8%	\$7.332	2.716	37,0%
	2500 TEU	\$9.255	\$9.351	-\$96	↔ -1,0%	\$9.426	-\$171	-1,8%	\$6.063	3.192	52,6%
	2700 TEU	\$9.521	\$9.556	-\$35	↔ -0,4%	\$9.623	-\$102	-1,1%	\$6.169	3.352	54,3%
	3500 TEU	\$8.997	\$9.051	-\$54	↔ -0,6%	\$9.480	-\$483	-5,1%	\$5.665	3.332	58,8%
	4250 TEU	\$8.631	\$8.815	-\$184	↓ -2,1%	\$9.903	-\$1.272	-12,8%	\$5.167	3.464	67,0%



Disclaimer

The brand NewConTex is copyrighted by Vereinigung Hamburger Schiffsmakler und Schiffsagenten e.V. ("VHSS e.V.") and is protected by law. The NewConTex may be published only with the source reference © VHSS e.V. It is distributed to the general public for information purposes only and cannot be relied upon as a trading recommendation and does not constitute a solicitation to trade. The reported information is obtained from market sources. While every effort has been made to ensure the accuracy and the completeness of the NewConTex, VHSS e.V. makes no representations, conditions or warranties of any kind, express or implied, about the completeness, accuracy, reliability, or suitability of the NewConTex. Any reliance you place on the NewConTex is therefore strictly at your own risk. Neither VHSS e.V. nor any of its subsidiaries or affiliates nor any employee of the foregoing shall be liable or have any responsibility for any loss, liability or damage, cost or expense including without limitation, indirect or consequential loss or damage, or any loss or damage whatsoever arising from loss of data or profits arising out of, or in connection with, the use of and the reliance on the NewConTex, save for death or personal injury arising from VHSS e.V. negligence and fraudulent misrepresentation that cannot, under German law, be excluded.