



New ConTex Container Ship Time Charter Assessment Index

New ConTex*		407	
26.05.17		12 mos	24 mos
Gearless	1100 TEU	\$6.543	n.a.
	1700 TEU	\$7.538	
	2500 TEU	\$9.439	
Gearless	2700 TEU	\$9.690	\$10.317
	3500 TEU	\$9.257	\$10.336
	4250 TEU	\$9.306	\$10.920

Legend		
↑	up	+ 2% or more
↗	steady up	from +1% to +1,9%
→	steady	+/- 1%
↘	steady down	from -1% to -1,9%
↓	down	- 2% or less

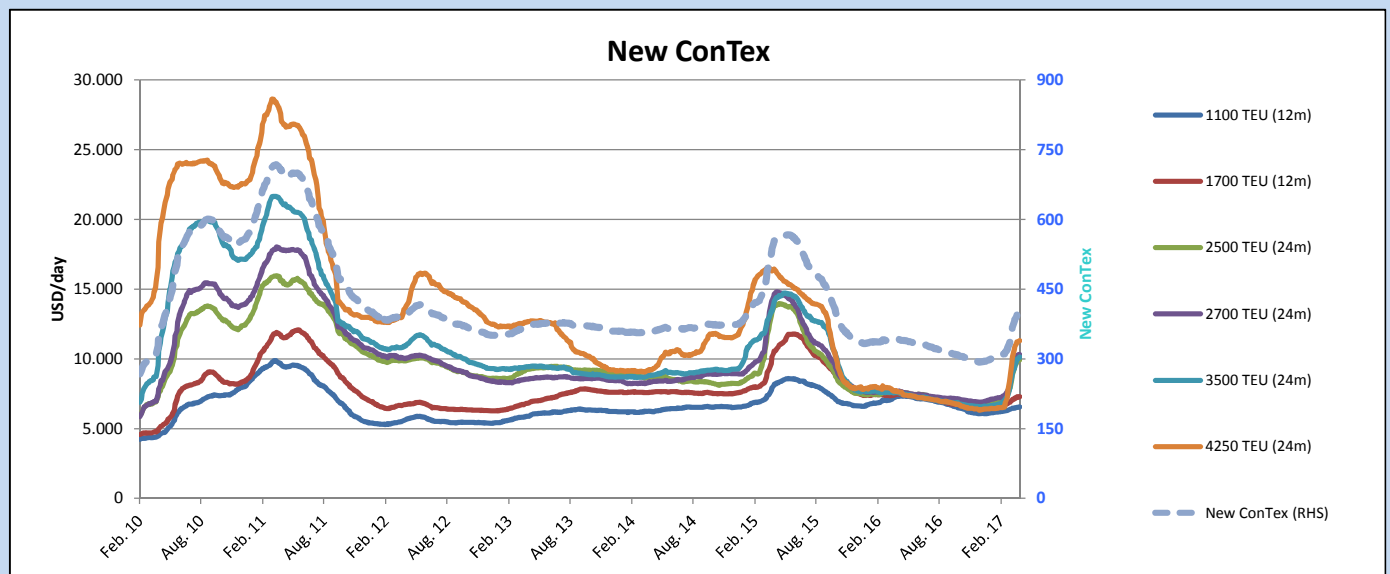
*New ConTex evaluation is EXCLUDING 2500/2700/3500/4250 TEU groups for 12 months period

New ConTex-Commentary - issued:	26.05.17
--	-----------------

The New ConTex Index has lost ground for the first time this year, shedding 3 points to stand at 407. Whilst not unexpected because of the current weakness in the old panamax 4250 TEU class, it nevertheless comes as a small shock to those hoping the market would continue its upward trend even at a much slower pace that witnessed recently.

Although the 4250 TEUs have experienced the largest losses, being marked down 2.4% and 3.0% (24 months and 12 months respectively) since last week, all the sizes tracked by New ConTex have been marked lower. The 3500 TEUs have also begun to lose ground, contrary to the expectation of market watchers who had assumed that the scarcity of such units to the market would have maintained rate levels; unfortunately the demand for 3500 TEUs has fallen away sharply enough to overcome this scarcity. The 3500 TEUs have been marked 1.3% and 1.5% (24 months and 12 months respectively) since last week.

Vessel type		Evaluated Period	New ConTex Development									
			Today 26.05.17	Week-on-Week 18.05.17		Month-on-Month 25.04.17		Year-on-Year 24.05.16				
				Change	Change		Change	Change		Change	Change	
New ConTex*			407	410	-3	↔ -0,7%	403	4	1,0%	338	69	20,4%
New ConTex	1100 TEU	12 mos	\$6.543	\$6.588	-\$45	↔ -0,7%	\$6.545	-\$2	0,0%	\$7.310	-767	-10,5%
	1700 TEU		\$7.538	\$7.572	-\$34	↔ -0,4%	\$7.345	\$193	2,6%	\$7.459	79	1,1%
	2500 TEU	24 mos	\$10.317	\$10.373	-\$56	↔ -0,5%	\$10.066	\$251	2,5%	\$7.526	2.791	37,1%
	2700 TEU		\$10.647	\$10.708	-\$61	↔ -0,6%	\$10.448	\$199	1,9%	\$7.543	3.104	41,2%
	3500 TEU		\$10.336	\$10.473	-\$137	↘ -1,3%	\$10.278	\$58	0,6%	\$7.442	2.894	38,9%
4250 TEU	\$10.920	\$11.187	-\$267	↓ -2,4%	\$11.388	-\$468	-4,1%	\$7.353	3.567	48,5%		
	2500 TEU	12 mos	\$9.439	\$9.468	-\$29	↔ -0,3%	\$9.284	\$155	1,7%	\$6.115	3.324	54,4%
	2700 TEU		\$9.690	\$9.705	-\$15	↔ -0,2%	\$9.493	\$197	2,1%	\$6.153	3.537	57,5%
	3500 TEU		\$9.257	\$9.394	-\$137	↘ -1,5%	\$9.322	-\$65	-0,7%	\$5.734	3.523	61,4%
	4250 TEU		\$9.306	\$9.595	-\$289	↓ -3,0%	\$10.002	-\$696	-7,0%	\$5.239	4.067	77,6%



Disclaimer

The brand NewConTex is copyrighted by Vereinigung Hamburger Schiffsmakler und Schiffsagenten e.V. ("VHSS e.V.") and is protected by law. The NewConTex may be published only with the source reference © VHSS e.V. It is distributed to the general public for information purposes only and cannot be relied upon as a trading recommendation and does not constitute a solicitation to trade. The reported information is obtained from market sources. While every effort has been made to ensure the accuracy and the completeness of the NewConTex, VHSS e.V. makes no representations, conditions or warranties of any kind, express or implied, about the completeness, accuracy, reliability, or suitability of the NewConTex. Any reliance you place on the NewConTex is therefore strictly at your own risk. Neither VHSS e.V. nor any of its subsidiaries or affiliates nor any employee of the foregoing shall be liable or have any responsibility for any loss, liability or damage, cost or expense including without limitation, indirect or consequential loss or damage, or any loss or damage whatsoever arising from loss of data or profits arising out of, or in connection with, the use of and the reliance on the NewConTex, save for death or personal injury arising from VHSS e.V. negligence and fraudulent misrepresentation that cannot, under German law, be excluded.