



New ConTex Container Ship Time Charter Assessment Index

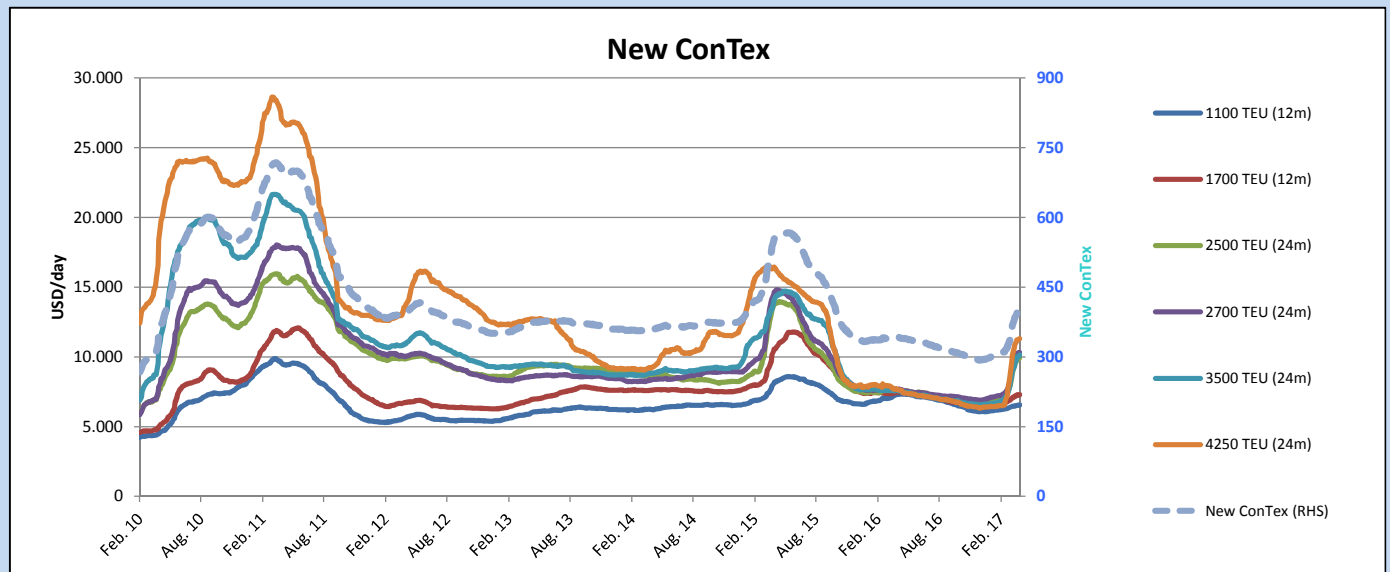
New ConTex*		410	
18.05.17		12 mos	24 mos
Geared	1100 TEU	\$6.588	n.a.
	1700 TEU	\$7.572	
	2500 TEU	\$9.468	
Gearless	2700 TEU	\$9.705	\$10.708
	3500 TEU	\$9.394	\$10.473
	4250 TEU	\$9.595	\$11.187

Legend		
↑	up	+ 2% or more
↗	steady up	from +1% to +1,9%
→	steady	+/- 1%
↘	steady down	from -1% to -1,9%
↓	down	- 2% or less

*New ConTex evaluation is EXCLUDING 2500/2700/3500/4250 TEU groups for 12 months period

New ConTex-Commentary - issued:	18.05.17
<p>The New ConTex Index has remained unchanged at 410 points since last week, with most segments remaining fairly flat week on week. Despite this lackluster performance, the index has not been at this level since October 2015. The 1,100 TEU charter rates were on the decline last week, falling USD 28 to USD 6,616 week on week. Significantly, while there has been a month on month increase for the 1,100 TEU segment, rates remain comparatively low to a year ago. Vessel segments between 1,700 TEU and 2,700 TEU could achieve slight improvements in their individual sub-indices, increasing on average around 0.5% week on week. Again, looking back to last year, from the 2500 TEU and larger, the segments have fared well, increasing between 37-51% year on year. After impressive increases in April, the classical Panamax, 4,250 TEU index was again the largest loser this week, losing 1.6% in the week-on-week, to stand at USD 11,187 today.</p>	

		New ConTex Development										
Vessel type	Evaluated Period	Today	Week-on-Week		Month-on-Month			Year-on-Year				
		18.05.17	11.05.17	Change	Change	18.04.17	Change	Change	17.05.16	Change	Change	
New ConTex*		410	410	0	→	0,0%	397	13	3,3%	339	71	20,9%
New ConTex	1100 TEU	\$6.588	\$6.616	-\$28	↘	-0,4%	\$6.529	\$59	0,9%	\$7.320	-732	-10,0%
	1700 TEU	\$7.572	\$7.531	\$41	↗	0,5%	\$7.254	\$318	4,4%	\$7.487	85	1,1%
	2500 TEU	\$10.373	\$10.327	\$46	↗	0,4%	\$9.879	\$494	5,0%	\$7.569	2.804	37,0%
	2700 TEU	\$10.708	\$10.649	\$59	↗	0,6%	\$10.310	\$398	3,9%	\$7.564	3.144	41,6%
	3500 TEU	\$10.473	\$10.508	-\$35	↘	-0,3%	\$10.064	\$409	4,1%	\$7.474	2.999	40,1%
	4250 TEU	\$11.187	\$11.374	-\$187	↘	-1,6%	\$11.274	-\$87	-0,8%	\$7.403	3.784	51,1%
	2500 TEU	\$9.468	\$9.441	\$27	↗	0,3%	\$9.107	\$361	4,0%	\$6.105	3.363	55,1%
	2700 TEU	\$9.705	\$9.647	\$58	↗	0,6%	\$9.402	\$303	3,2%	\$6.135	3.570	58,2%
	3500 TEU	\$9.394	\$9.486	-\$92	↘	-1,0%	\$9.201	\$193	2,1%	\$5.726	3.668	64,1%
	4250 TEU	\$9.595	\$9.871	-\$276	↘	-2,8%	\$9.959	-\$364	-3,7%	\$5.250	4.345	82,8%



Disclaimer

The brand NewConTex is copyrighted by Vereinigung Hamburger Schiffsmakler und Schiffsagenten e.V. ("VHSS e.V.") and is protected by law. The NewConTex may be published only with the source reference © VHSS e.V. It is distributed to the general public for information purposes only and cannot be relied upon as a trading recommendation and does not constitute a solicitation to trade. The reported information is obtained from market sources. While every effort has been made to ensure the accuracy and the completeness of the NewConTex, VHSS e.V. makes no representations, conditions or warranties of any kind, express or implied, about the completeness, accuracy, reliability, or suitability of the NewConTex. Any reliance you place on the NewConTex is therefore strictly at your own risk. Neither VHSS e.V. nor any of its subsidiaries or affiliates nor any employee of the foregoing shall be liable or have any responsibility for any loss, liability or damage, cost or expense including without limitation, indirect or consequential loss or damage, or any loss or damage whatsoever arising from loss of data or profits arising out of, or in connection with, the use of and the reliance on the NewConTex, save for death or personal injury arising from VHSS e.V. negligence and fraudulent misrepresentation that cannot, under German law, be excluded.