



New ConTex Container Ship Time Charter Assessment Index

New ConTex*		410	
11.05.17		12 mos	24 mos
Geared	1100 TEU	\$6.616	n.a.
	1700 TEU	\$7.531	
	2500 TEU	\$9.441	
Gearless	2700 TEU	\$9.647	\$10.327
	3500 TEU	\$9.486	\$10.508
	4250 TEU	\$9.871	\$11.374

Legend		
↑	up	+ 2% or more
↗	steady up	from +1% to +1,9%
→	steady	+/- 1 %
↘	steady down	from -1% to -1,9%
↓	down	- 2% or less

*New ConTex evaluation is EXCLUDING
2500/2700/3500/4250 TEU groups for
12 months period

New ConTex-Commentary - issued:

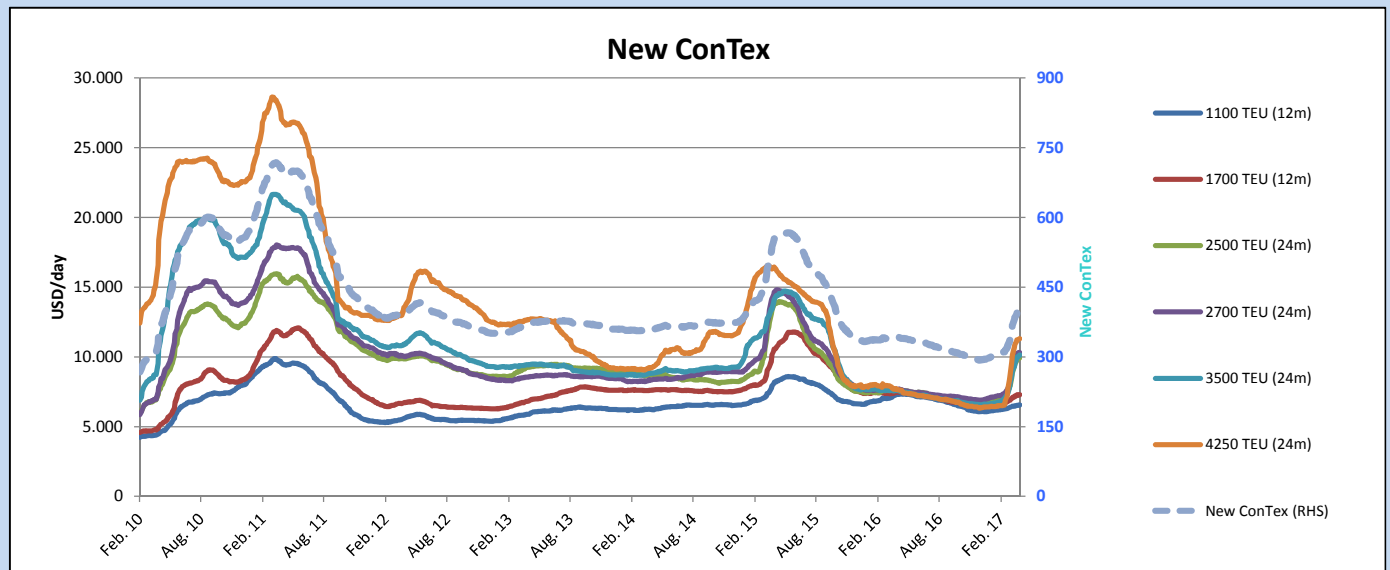
11.05.17

The pace of the New ConTex's upward movement has clearly slowed down. This week the index rose by 2 points only. However, the index is still rising. Since the beginning of the year it increased by astonishing 161 points which equals an increase of approximately 39.5%.

Looking at the sub-indices the main driver of the recent slowdown becomes apparent. While all vessel types could achieve an increase in the week-on-week comparison, the old panamax class of 4,250 TEU slackened. Hence, it can be identified as main cause of the increase's deceleration.

Nevertheless, for certain vessel types as e.g. sub-panamaxes between 2,000 – 3,000 TEU supply is still scarce which could lead to further upward pressure on charter rates for these vessel types.

			New ConTex Development										
Vessel type	Evaluated Period	Today	Week-on-Week				Month-on-Month			Year-on-Year			
		11.05.17	04.05.17	Change	Change	11.04.17	Change	Change	10.05.16	Change	Change		
New ConTex*		410	408	2	➡	0,5%	391	19	4,9%	340	70	20,6%	
New ConTex	1100 TEU	12 mos	\$6.616	\$6.606	\$10	➡	0,2%	\$6.504	\$112	1,7%	\$7.344	-728	-9,9%
	1700 TEU		\$7.531	\$7.474	\$57	➡	0,8%	\$7.218	\$313	4,3%	\$7.488	43	0,6%
	2500 TEU	24 mos	\$10.327	\$10.186	\$141	➡	1,4%	\$9.688	\$639	6,6%	\$7.585	2.742	36,2%
	2700 TEU		\$10.649	\$10.572	\$77	➡	0,7%	\$10.091	\$558	5,5%	\$7.590	3.059	40,3%
	3500 TEU		\$10.508	\$10.446	\$62	➡	0,6%	\$9.802	\$706	7,2%	\$7.481	3.027	40,5%
	4250 TEU		\$11.374	\$11.449	-\$75	➡	-0,7%	\$11.092	\$282	2,5%	\$7.419	3.955	53,3%
	2500 TEU	12 mos	\$9.441	\$9.365	\$76	➡	0,8%	\$8.881	\$560	6,3%	\$6.146	3.295	53,6%
	2700 TEU		\$9.647	\$9.594	\$53	➡	0,6%	\$9.186	\$461	5,0%	\$6.168	3.479	56,4%
	3500 TEU		\$9.486	\$9.449	\$37	➡	0,4%	\$8.843	\$643	7,3%	\$5.770	3.716	64,4%
	4250 TEU		\$9.871	\$9.985	-\$114	➡	-1,1%	\$9.764	\$107	1,1%	\$5.267	4.604	87,4%



Disclaimer

The brand NewConTex is copyrighted by Vereinigung Hamburger Schiffsmakler und Schiffsagenten e.V. ("VHSS e.V.") and is protected by law. The NewConTex may be published only with the source reference © VHSS e.V. It is distributed to the general public for information purposes only and cannot be relied upon as a trading recommendation and does not constitute a solicitation to trade. The reported information is obtained from market sources. While every effort has been made to ensure the accuracy and the completeness of the NewConTex, VHSS e.V. makes no representations, conditions or warranties of any kind, express or implied, about the completeness, accuracy, reliability, or suitability of the NewConTex. Any reliance you place on the NewConTex is therefore strictly at your own risk. Neither VHSS e.V. nor any of its subsidiaries or affiliates nor any employee of the foregoing shall be liable or have any responsibility for any loss, liability or damage, cost or expense including without limitation, indirect or consequential loss or damage, or any loss or damage whatsoever arising from loss of data or profits arising out of, or in connection with, the use of and the reliance on the NewConTex, save for death or personal injury arising from VHSS e.V. negligence and fraudulent misrepresentation that cannot, under German law, be excluded.