



## New ConTex Container Ship Time Charter Assessment Index

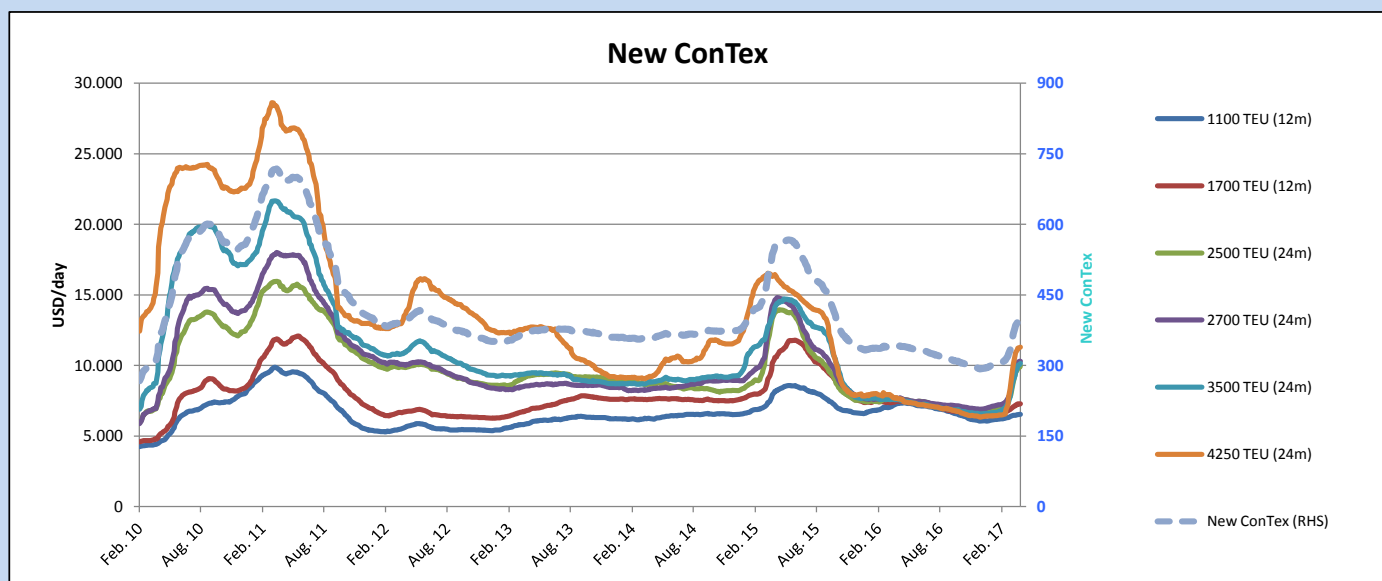
New ConTex*		405	
27.04.17		12 mos	24 mos
Geared	1100 TEU	\$6.563	n.a.
	1700 TEU	\$7.429	
	2500 TEU	\$9.290	
Gearless	2700 TEU	\$9.519	\$10.476
	3500 TEU	\$9.346	\$10.340
	4250 TEU	\$9.986	\$11.465

Legend		
↑	up	+ 2% or more
↗	steady up	from +1% to +1,9%
→	steady	+/- 1 %
↘	steady down	from -1% to -1,9%
↓	down	- 2% or less

\*New ConTex evaluation is EXCLUDING  
2500/2700/3500/4250 TEU groups for  
12 months period

New ConTex-Commentary - issued:		27.04.17
It is 18 months ago, that the New ConTex has been on a level above 400 points. With an increase of 1,5 %, respectively 6 points more than last week, crossed the border again and let the index finish the month of April at 405 points.		
All size and period categories ended the week with moderate improvements with one exception only: the 12 months evaluation for the 4250 TEU Panamax class lost on a w-o-w basis USD 38,- resp. 0,4% and broke the 5-digits area back to USD 9.986,- only. Nevertheless, specially the 12 months evaluation of the Babypanamaxes is still leading the y-o-y change with an outstanding increase of 87 per cent.		
In general, it can be mentioned that the Easter holiday break a fortnight ago did not harm the activity level too much and yet the number of fixtures concluded remains fairly stable. The only "downer" to be mentioned is still the situation that the recent successful improvement of the charter hire rates for the bigger units has not cascaded down so far to the smaller feedership units, which still need to catch up further.		

			New ConTex Development								
Vessel type	Evaluated Period	Today	Week-on-Week			Month-on-Month			Year-on-Year		
		27.04.17	20.04.17	Change	Change	28.03.17	Change	Change	26.04.16	Change	Change
New ConTex*		405	399	6	🡗 1,5%	358	47	13,1%	341	64	18,8%
New ConTex	1100 TEU	12 mos	\$6.563	\$6.539	\$24 🡗 0,4%	\$6.441	\$122	1,9%	\$7.311	-748	-10,2%
	1700 TEU		\$7.429	\$7.292	\$137 🡗 1,9%	\$7.017	\$412	5,9%	\$7.458	-29	-0,4%
	2500 TEU	24 mos	\$10.115	\$9.959	\$156 🡗 1,6%	\$8.511	\$1.604	18,8%	\$7.612	2.503	32,9%
	2700 TEU		\$10.476	\$10.312	\$164 🡗 1,6%	\$8.898	\$1.578	17,7%	\$7.645	2.831	37,0%
	3500 TEU		\$10.340	\$10.142	\$198 🡗 2,0%	\$8.680	\$1.660	19,1%	\$7.578	2.762	36,4%
	4250 TEU		\$11.465	\$11.300	\$165 🡗 1,5%	\$9.610	\$1.855	19,3%	\$7.626	3.839	50,3%
	2500 TEU	12 mos	\$9.290	\$9.223	\$67 🡗 0,7%	\$7.709	\$1.581	20,5%	\$6.103	3.187	52,2%
	2700 TEU		\$9.519	\$9.463	\$56 🡗 0,6%	\$8.059	\$1.460	18,1%	\$6.160	3.359	54,5%
	3500 TEU		\$9.346	\$9.279	\$67 🡗 0,7%	\$7.724	\$1.622	21,0%	\$5.755	3.591	62,4%
	4250 TEU		\$9.986	\$10.024	-\$38 🡗 -0,4%	\$8.414	\$1.572	18,7%	\$5.341	4.645	87,0%



#### Disclaimer

The brand NewConTex is copyrighted by Vereinigung Hamburger Schiffsmakler und Schiffsagenten e.V. ("VHSS e.V.") and is protected by law. The NewConTex may be published only with the source reference © VHSS e.V. It is distributed to the general public for information purposes only and cannot be relied upon as a trading recommendation and does not constitute a solicitation to trade. The reported information is obtained from market sources. While every effort has been made to ensure the accuracy and the completeness of the NewConTex, VHSS e.V. makes no representations, conditions or warranties of any kind, express or implied, about the completeness, accuracy, reliability, or suitability of the NewConTex. Any reliance you place on the NewConTex is therefore strictly at your own risk. Neither VHSS e.V. nor any of its subsidiaries or affiliates nor any employee of the foregoing shall be liable or have any responsibility for any loss, liability or damage, cost or expense including without limitation, indirect or consequential loss or damage, or any loss or damage whatsoever arising from loss of data or profits arising out of, or in connection with, the use of and the reliance on the NewConTex, save for death or personal injury arising from VHSS e.V. negligence and fraudulent misrepresentation that cannot, under German law, be excluded.