



New ConTex Container Ship Time Charter Assessment Index

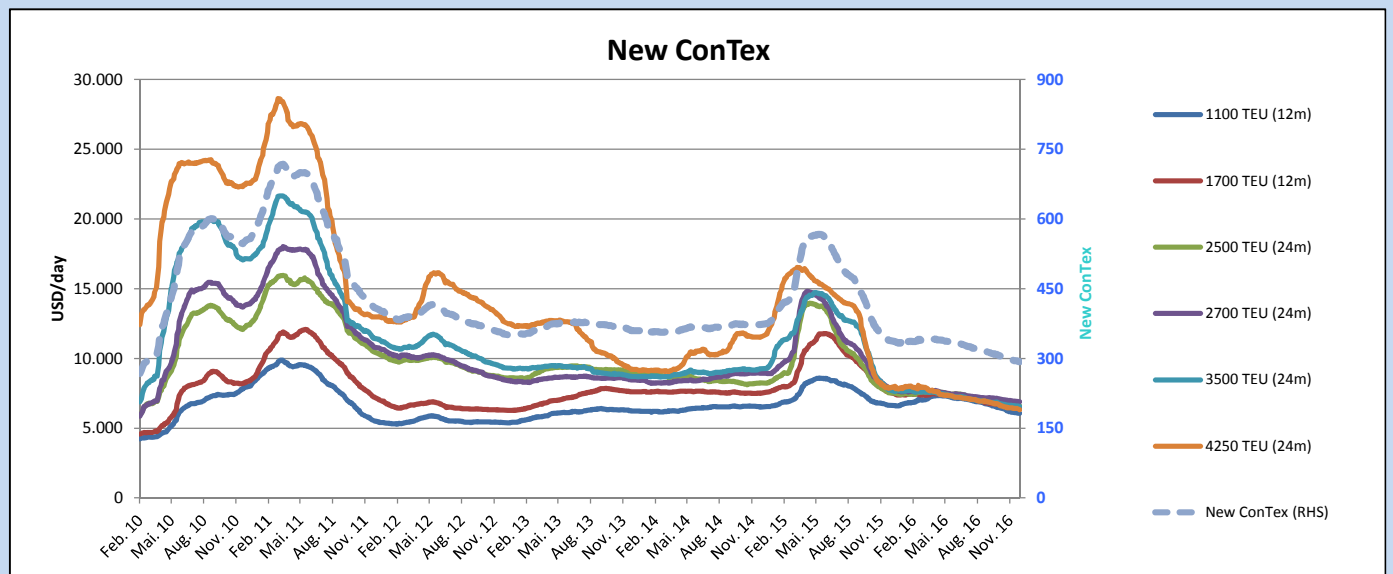
New ConTex*		293	
22.12.16		12 mos	24 mos
Gearless	1100 TEU	\$6.059	n.a.
	1700 TEU	\$6.387	
	2500 TEU	\$5.542	
Gearless	2700 TEU	\$5.952	\$6.893
	3500 TEU	\$5.304	\$6.554
	4250 TEU	\$4.148	\$6.329

Legend		
↑	up	+ 2% or more
↗	steady up	from +1% to +1.9%
→	steady	+/- 1%
↘	steady down	from -1% to -1.9%
↓	down	- 2% or less

*New ConTex evaluation is EXCLUDING 2500/2700/3500/4250 TEU groups for 12 months period

New ConTex-Commentary - issued:	22.12.16
<p>The last week of New ConTex of the year 2016 did not show any (positive) surprises at all. Though it would have been desirable to see at least for some classes some improving rate figures, the parameters are not showing any room these days for a positive rate development. As such the slightly descending trend, which has been lasting now since beginning of the year, also remains intact during the last week.</p> <p>In detail: this week ended 2 points lower than the last week with an index level of 293 points. Levels like this we have seen so far only once – that used to be back in March 2010. It is worthwhile to mention that back then we have seen a charter hire level for the 1100 TEU ships, which is equal to today's 12 months evaluation for the 4250 TEU PanMax-Segment. In order to have a memory of the full picture, back in early 2010, the 24 months evaluation of the 4250 TEU ships read about USD 13,800,-, i.e. more than twice the current amount. Amongst others a lot of things changed within the last six and a half years: one change is the amplitude of all the classes which went down from about USD 9,500,- from the biggest to the smallest class to today's difference of USD 2,745,- only.</p> <p>Stay strong and Merry Christmas.</p>	

Vessel type		Evaluated Period	New ConTex Development									
			Today 22.12.16	15.12.16	Week-on-Week		Month-on-Month		Year-on-Year			
					Change	Change	22.11.16	Change	Change	17.12.15	Change	Change
New ConTex*			293	295	-2	↔ -0,7%	298	-5	-1,7%	339	-46	-13,6%
New ConTex	1100 TEU	12 mos	\$6.059	\$6.095	-\$36	↔ -0,6%	\$6.194	-\$135	-2,2%	\$6.643	-584	-8,8%
	1700 TEU		\$6.387	\$6.440	-\$53	↔ -0,8%	\$6.579	-\$192	-2,9%	\$7.581	-1.194	-15,7%
	2500 TEU		\$6.585	\$6.619	-\$34	↔ -0,5%	\$6.649	-\$64	-1,0%	\$7.545	-960	-12,7%
	2700 TEU	24 mos	\$6.893	\$6.919	-\$26	↔ -0,4%	\$6.978	-\$85	-1,2%	\$7.862	-969	-12,3%
	3500 TEU		\$6.554	\$6.599	-\$45	↔ -0,7%	\$6.618	-\$64	-1,0%	\$7.769	-1.215	-15,6%
	4250 TEU		\$6.329	\$6.409	-\$80	↘ -1,2%	\$6.456	-\$127	-2,0%	\$7.870	-1.541	-19,6%
	2500 TEU	12 mos	\$5.542	\$5.545	-\$3	↔ -0,1%	\$5.485	\$57	1,0%	\$6.215	-673	-10,8%
	2700 TEU		\$5.952	\$5.981	-\$29	↔ -0,5%	\$5.990	-\$38	-0,6%	\$6.573	-621	-9,4%
	3500 TEU		\$5.304	\$5.346	-\$42	↔ -0,8%	\$5.320	-\$16	-0,3%	\$6.135	-831	-13,5%
	4250 TEU		\$4.148	\$4.173	-\$25	↔ -0,6%	\$4.233	-\$85	-2,0%	\$5.895	-1.747	-29,6%



Disclaimer

The brand NewConTex is copyrighted by Vereinigung Hamburger Schiffsmakler und Schiffsagenten e.V. ("VHSS e.V.") and is protected by law. The NewConTex may be published only with the source reference © VHSS e.V. It is distributed to the general public for information purposes only and cannot be relied upon as a trading recommendation and does not constitute a solicitation to trade. The reported information is obtained from market sources. While every effort has been made to ensure the accuracy and the completeness of the NewConTex, VHSS e.V. makes no representations, conditions or warranties of any kind, express or implied, about the completeness, accuracy, reliability, or suitability of the NewConTex. Any reliance you place on the NewConTex is therefore strictly at your own risk. Neither VHSS e.V. nor any of its subsidiaries or affiliates nor any employee of the foregoing shall be liable or have any responsibility for any loss, liability or damage, cost or expense including without limitation, indirect or consequential loss or damage, or any loss or damage whatsoever arising from loss of data or profits arising out of, or in connection with, the use of and the reliance on the NewConTex, save for death or personal injury arising from VHSS e.V. negligence and fraudulent misrepresentation that cannot, under German law, be excluded.