



New ConTex Container Ship Time Charter Assessment Index

New ConTex*		309	
13.10.16		12 mos	24 mos
Gearless	1100 TEU	\$6.574	n.a.
	1700 TEU	\$6.745	
	2500 TEU	\$5.691	
Gearless	2700 TEU	\$6.093	\$7.131
	3500 TEU	\$5.454	\$6.843
	4250 TEU	\$4.553	\$6.744

Legend		
↑	up	+ 2% or more
↗	steady up	from +1% to +1,9%
→	steady	+/- 1%
↘	steady down	from -1% to -1,9%
↓	down	- 2% or less

*New ConTex evaluation is EXCLUDING 2500/2700/3500/4250 TEU groups for 12 months period

New ConTex-Commentary - issued: 13.10.16

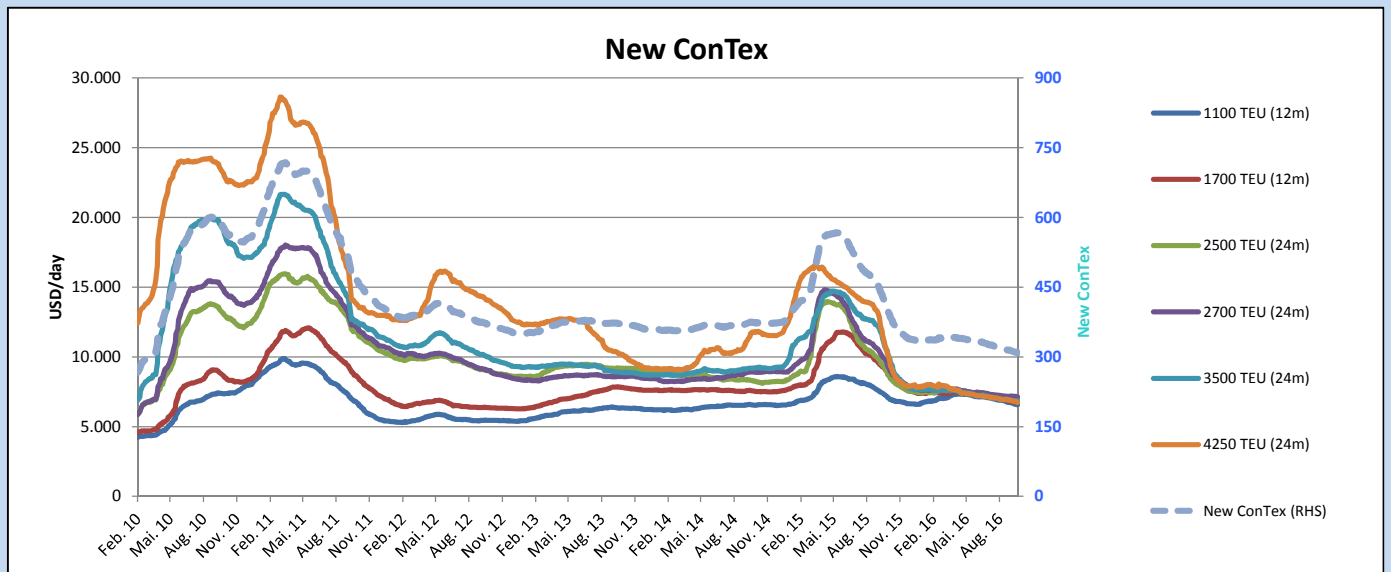
The holiday season in Asia along with consistent poor demand did not help charter rates, as the ConTex keeps slipping. During this week the Index lost another 1 point although at the beginning of the week, rates for the 1,700 type stabilised, but the latest result shows that it has reduced by USD 15.

The biggest decline was observed in the 4,250 TEU segment, falling by USD 58 week on week. This is supported by the recent idle figures, showing 121 spot vessels in the segment, with additional vessels expected to join. Rates in the 12 months 2,700 TEU segment were volatile, rising by USD 31 at the beginning of the week, only to fall by USD 34 according to the latest evaluation. Similar course of movement is observed for the 12 months 3,500 type, rising by USD 46 and then falling by USD 16. The 4,250 type on the other hand has shown no sign of recovery, falling by USD 32 week on week.

Generally, rates are suffering throughout all sizes continuing the downward trend at the end of the week. It's probably only a matter of time the Index to fall below the 300 points mark, the lowest level for the New ConTex since April 2010.

New ConTex Development

Vessel type	Evaluated Period	Today	Week-on-Week		Month-on-Month		Year-on-Year					
		13.10.16	06.10.16	Change	Change	13.09.16	Change	Change	13.10.15	Change	Change	
New ConTex*		309	310	-1	↔ -0,3%	315	-6	-1,9%	420	-111	-26,4%	
New ConTex	12 mos	1100 TEU	\$6.574	\$6.600	-\$26	↔ -0,4%	\$6.783	-\$209	-3,1%	\$7.291	-717	-9,8%
		1700 TEU	\$6.745	\$6.760	-\$15	↔ -0,2%	\$6.870	-\$125	-1,8%	\$9.181	-2.436	-26,5%
		2500 TEU	\$6.909	\$6.941	-\$32	↔ -0,5%	\$7.016	-\$107	-1,5%	\$9.256	-2.347	-25,4%
	24 mos	2700 TEU	\$7.131	\$7.159	-\$28	↔ -0,4%	\$7.179	-\$48	-0,7%	\$9.833	-2.702	-27,5%
		3500 TEU	\$6.843	\$6.846	-\$3	↔ 0,0%	\$6.960	-\$117	-1,7%	\$10.829	-3.986	-36,8%
		4250 TEU	\$6.744	\$6.802	-\$58	↔ -0,9%	\$6.959	-\$215	-3,1%	\$10.988	-4.244	-38,6%
12 mos	2500 TEU	\$5.691	\$5.737	-\$46	↔ -0,8%	\$5.793	-\$102	-1,8%	\$8.125	-2.434	-30,0%	
	2700 TEU	\$6.093	\$6.096	-\$3	↔ 0,0%	\$6.057	\$36	0,6%	\$8.772	-2.679	-30,5%	
	3500 TEU	\$5.454	\$5.424	\$30	↔ 0,6%	\$5.391	\$63	1,2%	\$9.694	-4.240	-43,7%	
	4250 TEU	\$4.553	\$4.585	-\$32	↔ -0,7%	\$4.766	-\$213	-4,5%	\$9.246	-4.693	-50,8%	



Disclaimer

The brand NewConTex is copyrighted by Vereinigung Hamburger Schiffsmakler und Schiffsagenten e.V. ("VHSS e.V.") and is protected by law. The NewConTex may be published only with the source reference © VHSS e.V. It is distributed to the general public for information purposes only and cannot be relied upon as a trading recommendation and does not constitute a solicitation to trade. The reported information is obtained from market sources. While every effort has been made to ensure the accuracy and the completeness of the NewConTex, VHSS e.V. makes no representations, conditions or warranties of any kind, express or implied, about the completeness, accuracy, reliability, or suitability of the NewConTex. Any reliance you place on the NewConTex is therefore strictly at your own risk. Neither VHSS e.V. nor any of its subsidiaries or affiliates nor any employee of the foregoing shall be liable or have any responsibility for any loss, liability or damage, cost or expense including without limitation, indirect or consequential loss or damage, or any loss or damage whatsoever arising from loss of data or profits arising out of, or in connection with, the use of and the reliance on the NewConTex, save for death or personal injury arising from VHSS e.V. negligence and fraudulent misrepresentation that cannot, under German law, be excluded.