



## New ConTex Container Ship Time Charter Assessment Index

New ConTex*		315	
15.09.16		12 mos	24 mos
Gearless Geared	1100 TEU	\$6,766	n.a.
	1700 TEU	\$6,841	
	2500 TEU	\$5,772	
Gearless	2700 TEU	\$6,048	\$7,174
	3500 TEU	\$5,381	\$6,925
	4250 TEU	\$4,747	\$6,925

Legend		
↑	up	+ 2% or more
↔	steady up	from +1% to +1,9%
→	steady	+/- 1 %
↔	steady down	from -1% to -1,9%
↓	down	- 2% or less

\*New ConTex evaluation is EXCLUDING  
2500/2700/3500/4250 TEU groups for  
12 months period

### New ConTex-Commentary - issued:

15.09.16

A sobering summer season for the charter market is coming to an end and the New ConTex finished this week at 315, losing another 2 points. The figure is now slowly drifting into regions last seen in April 2010. With the Golden Week in Asia and the autumn low season ahead the recent trend appears to be hard to change.

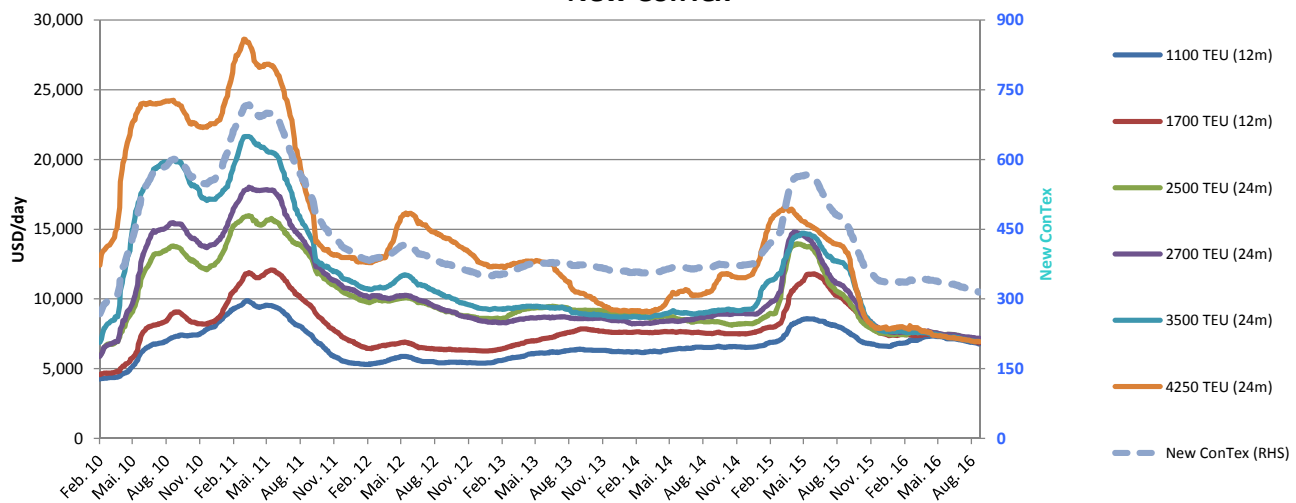
The decreasing demand in the feeder segments continues and the 1100 & 1700 TEU segments have seen the biggest drop this week (-1.2% for 1100 TEU basis 12 months). In contrast, the 2700 TEU group is the only one which is bucking the downward trend (+0.1% for the 12 months evaluation) due to a number of solid fixtures in Asia.

The classic panamax sector decreased only marginal by -0.3% to USD 4,747 for 12 months however the market has seen some vessels obtaining rates starting with a "5". Nevertheless an idle tramp-fleet of nearly 90 classic panamaxes gives charterers plenty of choice and opportunity to cover on a prompt basis extra requirements due to the demise of Hanjin Shipping.

### New ConTex Development

Vessel type		Evaluated Period	Today	Week-on-Week				Month-on-Month			Year-on-Year		
			15.09.16	08.09.16	Change		Change	16.08.16	Change	Change	15.09.15	Change	Change
New ConTex*			315	317	-2	↔	-0.6%	322	-7	-2.2%	464	-149	-32.1%
New ConTex	1100 TEU	12 mos	\$6,766	\$6,846	-\$80	↔	-1.2%	\$6,938	-\$172	-2.5%	\$7,757	-\$991	-12.8%
	1700 TEU		\$6,841	\$6,899	-\$58	↔	-0.8%	\$7,047	-\$206	-2.9%	\$9,834	-\$2,993	-30.4%
	2500 TEU		\$7,004	\$7,031	-\$27	↔	-0.4%	\$7,201	-\$197	-2.7%	\$10,116	-\$3,112	-30.8%
	2700 TEU	24 mos	\$7,174	\$7,187	-\$13	↔	-0.2%	\$7,267	-\$93	-1.3%	\$10,771	-\$3,597	-33.4%
	3500 TEU		\$6,925	\$6,954	-\$29	↔	-0.4%	\$7,029	-\$104	-1.5%	\$12,446	-\$5,521	-44.4%
	4250 TEU		\$6,925	\$6,945	-\$20	↔	-0.3%	\$7,057	-\$132	-1.9%	\$13,535	-\$6,610	-48.8%
	2500 TEU	12 mos	\$5,772	\$5,800	-\$28	↔	-0.5%	\$5,925	-\$153	-2.6%	\$8,884	-\$3,112	-35.0%
	2700 TEU		\$6,048	\$6,041	\$7	↔	0.1%	\$6,087	-\$39	-0.6%	\$9,502	-\$3,454	-36.4%
	3500 TEU		\$5,381	\$5,396	-\$15	↔	-0.3%	\$5,438	-\$57	-1.0%	\$11,361	-\$5,980	-52.6%
	4250 TEU		\$4,747	\$4,759	-\$12	↔	-0.3%	\$4,950	-\$203	-4.1%	\$12,371	-\$7,624	-61.6%

### New ConTex



Disclaimer

The brand NewConTex is copyrighted by Vereinigung Hamburger Schiffsmakler und Schiffsagenten e.V. ("VHSS e.V.") and is protected by law. The NewConTex may be published only with the source reference © VHSS e.V. It is distributed to the general public for information purposes only and cannot be relied upon as a trading recommendation and does not constitute a solicitation to trade. The reported information is obtained from market sources. While every effort has been made to ensure the accuracy and the completeness of the NewConTex, VHSS e.V. makes no representations, conditions or warranties of any kind, express or implied, about the completeness, accuracy, reliability, or suitability of the NewConTex. Any reliance you place on the NewConTex is therefore strictly at your own risk. Neither VHSS e.V. nor any of its subsidiaries or affiliates nor any employee of the foregoing shall be liable or have any responsibility for any loss, liability or damage, cost or expense including without limitation, indirect or consequential loss or damage, or any loss or damage whatsoever arising from loss of data or profits arising out of, or in connection with, the use of and the reliance on the NewConTex, save for death or personal injury arising from VHSS e.V. negligence and fraudulent misrepresentation that cannot, under German law, be excluded.