



## New ConTex Container Ship Time Charter Assessment Index

New ConTex*		322	
11.08.16		12 mos	24 mos
Gearless	1100 TEU	\$6.953	n.a.
	1700 TEU	\$7.066	
Gearless	2500 TEU	\$5.926	\$7.210
	2700 TEU	\$6.087	\$7.269
	3500 TEU	\$5.449	\$7.044
	4250 TEU	\$4.950	\$7.052

Legend		
↑	up	+ 2% or more
↗	steady up	from +1% to +1,9%
→	steady	+/- 1%
↘	steady down	from -1% to -1,9%
↓	down	- 2% or less

\*New ConTex evaluation is EXCLUDING  
2500/2700/3500/4250 TEU groups for  
12 months period

### New ConTex-Commentary - issued:

11.08.16

The New ConTex Index has lost another three points this week to stand at a new 2016 low of 322. Whilst soft market conditions are to be expected at this time of year - even in the good times - there seems no encouraging signs yet that Owners will be able to reverse the trend of continually reducing rates.

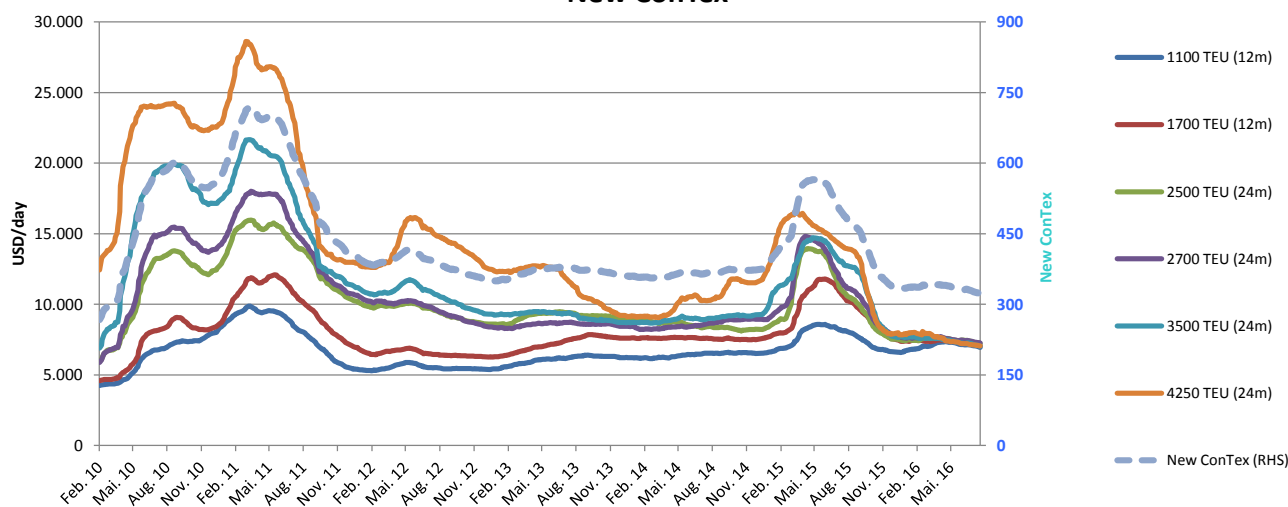
Even though the level of scrapping is holding up and record numbers of panamaxs are heading for demolition, the fact is that the industry remains fundamentally over-invested. Much more capacity will have to be removed from the active fleet before there is any chance of a return to sustained profitability.

A closer examination of the Index shows not one size was marked higher. The heaviest falls this week were the 1100 TEUs (1.1% down) and 3500 TEUs (1.3% lower), both basis 12 months terms. The sector marked down the least was the 2700 TEU class which lost only 0.3% over the week.

### New ConTex Development

Vessel type		Evaluated Period	Today	Week-on-Week				Month-on-Month			Year-on-Year		
			11.08.16	04.08.16	Change	Change	12.07.16	Change	Change	11.08.15	Change	Change	
New ConTex*			322	325	-3	➡	-0.9%	330	-8	-2.4%	491	-169	-34.4%
New ConTex	1100 TEU	12 mos	\$6.953	\$7.029	-\$76	➡	-1.1%	\$7.129	-\$176	-2.5%	\$8.095	-1.142	-14.1%
	1700 TEU		\$7.066	\$7.129	-\$63	➡	-0.9%	\$7.281	-\$215	-3.0%	\$10.577	-3.511	-33.2%
	2500 TEU	24 mos	\$7.210	\$7.257	-\$47	➡	-0.6%	\$7.402	-\$192	-2.6%	\$10.874	-3.664	-33.7%
	2700 TEU		\$7.269	\$7.288	-\$19	➡	-0.3%	\$7.411	-\$142	-1.9%	\$11.415	-4.146	-36.3%
	3500 TEU		\$7.044	\$7.107	-\$63	➡	-0.9%	\$7.253	-\$209	-2.9%	\$12.912	-5.868	-45.4%
	4250 TEU		\$7.052	\$7.098	-\$46	➡	-0.6%	\$7.181	-\$129	-1.8%	\$14.066	-7.014	-49.9%
	2500 TEU	12 mos	\$5.926	\$5.963	-\$37	➡	-0.6%	\$6.082	-\$156	-2.6%	\$9.709	-3.783	-39.0%
	2700 TEU		\$6.087	\$6.115	-\$28	➡	-0.5%	\$6.217	-\$130	-2.1%	\$10.233	-4.146	-40.5%
	3500 TEU		\$5.449	\$5.519	-\$70	➡	-1.3%	\$5.537	-\$88	-1.6%	\$11.895	-6.446	-54.2%
	4250 TEU		\$4.950	\$4.974	-\$24	➡	-0.5%	\$5.058	-\$108	-2.1%	\$12.973	-8.023	-61.8%

### New ConTex



#### Disclaimer

The brand NewConTex is copyrighted by Vereinigung Hamburger Schiffsmakler und Schiffsagenten e.V. ("VHSS e.V.") and is protected by law. The NewConTex may be published only with the source reference © VHSS e.V. It is distributed to the general public for information purposes only and cannot be relied upon as a trading recommendation and does not constitute a solicitation to trade. The reported information is obtained from market sources. While every effort has been made to ensure the accuracy and the completeness of the NewConTex, VHSS e.V. makes no representations, conditions or warranties of any kind, express or implied, about the completeness, accuracy, reliability, or suitability of the NewConTex. Any reliance you place on the NewConTex is therefore strictly at your own risk. Neither VHSS e.V. nor any of its subsidiaries or affiliates nor any employee of the foregoing shall be liable or have any responsibility for any loss, liability or damage, cost or expense including without limitation, indirect or consequential loss or damage, or any loss or damage whatsoever arising from loss of data or profits arising out of, or in connection with, the use of and the reliance on the NewConTex, save for death or personal injury arising from VHSS e.V. negligence and fraudulent misrepresentation that cannot, under German law, be excluded.