



## New ConTex Container Ship Time Charter Assessment Index

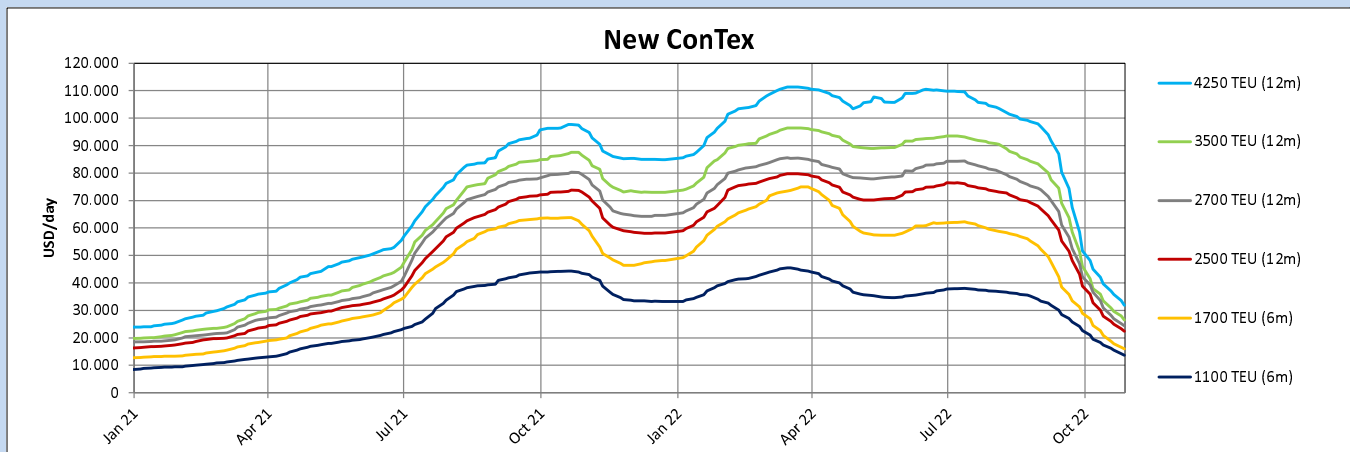
New ConTex*		974	
27.10.22		6 mos	12 mos
Geared	1100 TEU	\$13.636	n.a.
	1700 TEU	\$16.018	
	2500 TEU		\$22.395
Gearless	2700 TEU	n.a.	\$24.323
	3500 TEU		\$26.450
	4250 TEU		\$31.810

Legend		
↑	up	+ 2% or more
↗	steady up	from +1% to +1,9%
→	steady	+/- 1 %
↘	steady down	from -1% to -1,9%
↓	down	- 2% or less

\*New ConTex evaluation is EXCLUDING 1100/1700/5700/6500 TEU groups for 12 months period & 2500/2700/3500/4250 TEU groups for 24 months period

New ConTex-Commentary - issued:		27.10.22
<p>It seems activity is finally picking up after a rather slow period related to Chinese Golden Week. Particularly ships above 2000 TEU are now being absorbed pretty easily albeit mostly for short term respectively round voyage businesses.</p> <p>The general feeling is that the market for the bigger segments above 2000 TEU is finally bottoming out and thus following the trend we have recently been watching on the freight indices as well. The situation in the smaller segments is somewhat different with many more ships especially in Asia coming available in the next couple of weeks. That is why we expect charter rates at least in the pacific basin to come under further pressure.</p>		

New ConTex Development											
Vessel type	Evaluated Period	Today	Week-on-Week		Month-on-Month			Year-on-Year			
		27.10.22	20.10.22	Change	Change	27.09.22	Change	Change	28.10.21	Change	Change
<b>New ConTex*</b>		<b>974</b>	1093	-119	↓ -10,9%	1846	-872	↓ -47,2%	3209	-2.235	↓ -69,6%
1100 TEU	6 mos	\$13.636	\$15.550	-\$1.914	↓ -12,3%	\$24.164	-\$10.528	↓ -43,6%	\$43.442	-\$29.806	↓ -68,6%
	12 mos	\$12.727	\$14.275	-\$1.548	↓ -10,8%	\$22.045	-\$9.318	↓ -42,3%	\$36.238	-\$23.511	↓ -64,9%
1700 TEU	6 mos	\$16.018	\$17.896	-\$1.878	↓ -10,5%	\$31.227	-\$15.209	↓ -48,7%	\$61.383	-\$45.365	↓ -73,9%
	12 mos	\$15.182	\$17.025	-\$1.843	↓ -10,8%	\$28.318	-\$13.136	↓ -46,4%	\$48.538	-\$33.356	↓ -68,7%
2500 TEU	12 mos	\$22.395	\$24.932	-\$2.537	↓ -10,2%	\$43.127	-\$20.732	↓ -48,1%	\$73.068	-\$50.673	↓ -69,4%
	24 mos	\$18.164	\$19.500	-\$1.336	↓ -6,9%	\$30.923	-\$12.759	↓ -41,3%	\$45.536	-\$27.372	↓ -60,1%
2700 TEU	12 mos	\$24.323	\$26.986	-\$2.663	↓ -9,9%	\$46.955	-\$22.632	↓ -48,2%	\$79.532	-\$55.209	↓ -69,4%
	24 mos	\$19.886	\$21.673	-\$1.787	↓ -8,2%	\$34.386	-\$14.500	↓ -42,2%	\$49.741	-\$29.855	↓ -60,0%
3500 TEU	12 mos	\$26.450	\$29.645	-\$3.195	↓ -10,8%	\$51.425	-\$24.975	↓ -48,6%	\$86.505	-\$60.055	↓ -69,4%
	24 mos	\$21.875	\$23.875	-\$2.000	↓ -8,4%	\$39.100	-\$17.225	↓ -44,1%	\$56.935	-\$35.060	↓ -61,6%
4250 TEU	12 mos	\$31.810	\$35.850	-\$4.040	↓ -11,3%	\$58.510	-\$26.700	↓ -45,6%	\$96.215	-\$64.405	↓ -66,9%
	24 mos	\$26.575	\$29.000	-\$2.425	↓ -8,4%	\$45.100	-\$18.525	↓ -41,1%	\$67.075	-\$40.500	↓ -60,4%
5700 TEU	12 mos	\$39.944	\$44.056	-\$4.112	↓ -9,3%	\$75.278	-\$35.334	↓ -46,9%	\$106.472	-\$66.528	↓ -62,5%
6500 TEU	12 mos	\$48.472	\$52.833	-\$4.361	↓ -8,3%	\$82.839	-\$34.367	↓ -41,5%	\$113.367	-\$64.895	↓ -57,2%



**Disclaimer**

The brand NewConTex is copyrighted by Verband Hamburger und Bremer Schiffsmakler e.V. ("VHBS e.V.") and is protected by law. The NewConTex may be published only with the source reference © VHBS e.V. It is distributed to the general public for information purposes only and can not be relied upon as a trading recommendation and does not constitute a solicitation to trade. The reported information is obtained from market sources. While every effort has been made to ensure the accuracy and the completeness of the NewConTex, VHBS e.V. makes no representations, conditions or warranties of any kind, express or implied, about the completeness, accuracy, reliability, or suitability of the NewConTex. Any reliance you place on the NewConTex is therefore strictly at your own risk. Neither VHBS e.V. nor any of its subsidiaries or affiliates nor any employee of the foregoing shall be liable or have any responsibility for any loss, liability or damage, cost or expense including without limitation, indirect or consequential loss or damage, or any loss or damage whatsoever arising from loss of data or profits arising out of, or in connection with, the use of and the reliance on the NewConTex, save for death or personal injury arising from VHBS e.V. negligence and fraudulent misrepresentation that cannot, under German law, be excluded.