

New ConTex Container Ship Time Charter Assessment Index

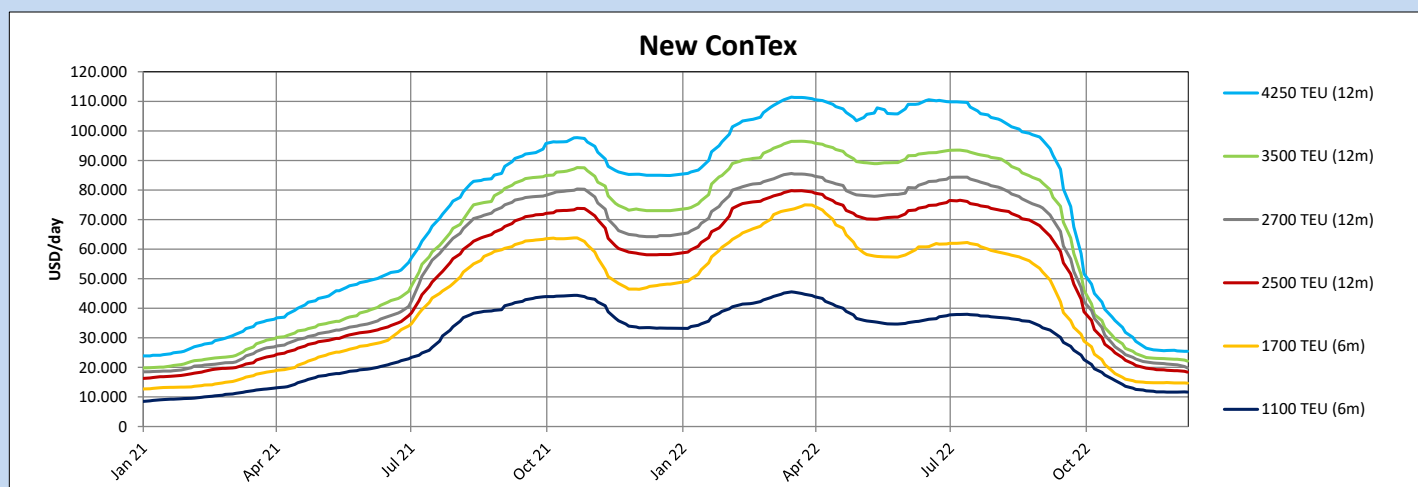
New ConTex*		817	
08.12.22		6 mos	12 mos
Geared	1100 TEU	\$11.675	n.a.
	1700 TEU	\$14.648	
	2500 TEU		
Gearless	2700 TEU	n.a.	\$19.827
	3500 TEU		\$22.145
	4250 TEU		\$25.420

Legend		
↑	up	+ 2% or more
↗	steady up	from +1% to +1,9%
→	steady	+/- 1 %
↘	steady down	from -1% to -1,9%
↓	down	- 2% or less

*New ConTex evaluation is EXCLUDING 1100/1700/5700/6500 TEU groups for 12 months period & 2500/2700/3500/4250 TEU groups for 24 months period

New ConTex-Commentary - issued:		08.12.22
<p>The development of the New ConTex this week, with a slight downwards movement, does reflect quite well the market sentiment felt, in particular in the later part of the week. The halting pattern of the Chartering market of late has been broken. The generally positive news of the Chinese government relaxing COVID regulations has not had a positive effect on the Container Chartering market yet. This might very likely create potential for improvement though. Fixture activity is there, however rather lacklustre in particular regarding to periods fixed, which are mainly in the region of six to eight months. Whatever way you want to put it, uncertainty is the big force driving this market. So much for the bad news...what we need to remind ourselves though is that historically, especially looking at the last ten years rates levels are still rather healthy, thus despite a Year-on-Year drop of about 69% in the New ConTex, rate levels are robust, if we manage to put the extreme levels upto the summer this year into perspective. 2500-2800 TEU design continue to be the punching bag of the market. For the little rest this year still holds for us, more of the same can probably be expected, a little down, a little sideways movement, with any possible recovery to be postponed to 2023....Time to get some presents! Happy weekend!</p>		

New ConTex Development														
Vessel type	Evaluated Period	Today	Week-on-Week				Month-on-Month			Year-on-Year				
		08.12.22	01.12.22	Change			08.11.22	Change		09.12.21	Change			
New ConTex*		817	833	-16	👇	-1,9%	874	-57	👇	-6,5%	2608	-1.791	👇	-68,7%
1100 TEU	6 mos	\$11.675	\$11.663	\$12	👉	0,1%	\$12.329	-\$654	👇	-5,3%	\$33.496	-\$21.821	👇	-65,1%
	12 mos	\$10.779	\$10.735	\$44	👉	0,4%	\$11.390	-\$611	👇	-5,4%	\$30.058	-\$19.279	👇	-64,1%
1700 TEU	6 mos	\$14.648	\$14.758	-\$110	👉	-0,7%	\$14.992	-\$344	👇	-2,3%	\$47.375	-\$32.727	👇	-69,1%
	12 mos	\$14.098	\$14.237	-\$139	👉	-1,0%	\$14.325	-\$227	👉	-1,6%	\$42.367	-\$28.269	👇	-66,7%
2500 TEU	12 mos	\$18.418	\$18.879	-\$461	👇	-2,4%	\$19.991	-\$1.573	👇	-7,9%	\$58.095	-\$39.677	👇	-68,3%
	24 mos	\$15.886	\$15.958	-\$72	👇	-0,5%	\$16.693	-\$807	👇	-4,8%	\$41.436	-\$25.550	👇	-61,7%
2700 TEU	12 mos	\$19.827	\$20.873	-\$1.046	👇	-5,0%	\$22.018	-\$2.191	👇	-10,0%	\$64.209	-\$44.382	👇	-69,1%
	24 mos	\$16.923	\$17.231	-\$308	👉	-1,8%	\$18.048	-\$1.125	👇	-6,2%	\$45.727	-\$28.804	👇	-63,0%
3500 TEU	12 mos	\$22.145	\$22.730	-\$585	👇	-2,6%	\$23.730	-\$1.585	👇	-6,7%	\$73.050	-\$50.905	👇	-69,7%
	24 mos	\$18.960	\$19.118	-\$158	👉	-0,8%	\$19.635	-\$675	👇	-3,4%	\$53.550	-\$34.590	👇	-64,6%
4250 TEU	12 mos	\$25.420	\$25.545	-\$125	👉	-0,5%	\$27.225	-\$1.805	👇	-6,6%	\$85.005	-\$59.585	👇	-70,1%
	24 mos	\$21.810	\$21.925	-\$115	👉	-0,5%	\$23.340	-\$1.530	👇	-6,6%	\$64.075	-\$42.265	👇	-66,0%
5700 TEU	12 mos	\$34.372	\$34.785	-\$413	👉	-1,2%	\$36.089	-\$1.717	👇	-4,8%	\$98.111	-\$63.739	👇	-65,0%
6500 TEU	12 mos	\$40.950	\$41.380	-\$430	👉	-1,0%	\$45.389	-\$4.439	👇	-9,8%	\$104.256	-\$63.306	👇	-60,7%



Disclaimer

The brand NewConTex is copyrighted by Verband Hamburger und Bremer Schiffsmakler e.V. ("VHBS e.V.") and is protected by law. The NewConTex may be published only with the source reference © VHBS e.V. It is distributed to the general public for information purposes only and cannot be relied upon as a trading recommendation and does not constitute a solicitation to trade. The reported information is obtained from market sources. While every effort has been made to ensure the accuracy and the completeness of the NewConTex, VHBS e.V. makes no representations, conditions or warranties of any kind, express or implied, about the completeness, accuracy, reliability, or suitability of the NewConTex. Any reliance you place on the NewConTex is therefore strictly at your own risk. Neither VHBS e.V. nor any of its subsidiaries or affiliates nor any employee of the foregoing shall be liable or have any responsibility for any loss, liability or damage, cost or expense including without limitation, indirect or consequential loss or damage, or any loss or damage whatsoever arising from loss of data or profits arising out of, or in connection with, the use of and the reliance on the NewConTex, save for death or personal injury arising from VHBS e.V. negligence and fraudulent misrepresentation that cannot, under German law, be excluded.