



## New ConTex Container Ship Time Charter Assessment Index

New ConTex*		2733	
08.09.22		6 mos	12 mos
Geared	1100 TEU	\$31.895	n.a.
	1700 TEU	\$47.550	
	2500 TEU	\$62.986	
Gearless	2700 TEU	n.a.	\$69.941
	3500 TEU		\$77.550
	4250 TEU		\$91.770

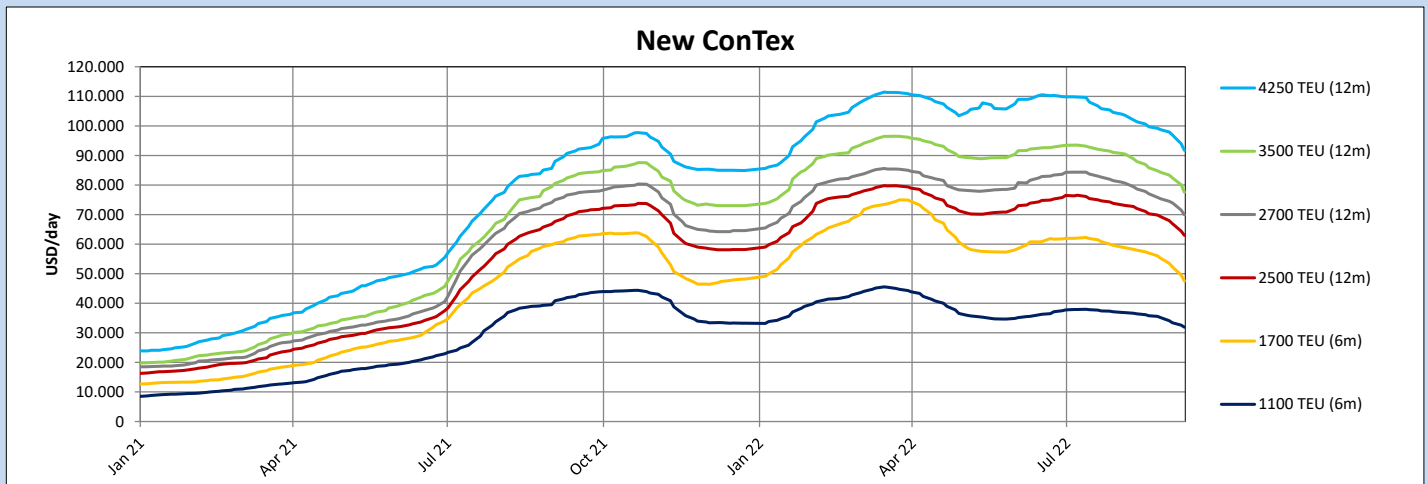
Legend		
↑	up	+ 2% or more
↗	steady up	from +1% to +1,9%
↔	steady	+/- 1 %
↘	steady down	from -1% to -1,9%
↓	down	- 2% or less

\*New ConTex evaluation is EXCLUDING 1100/1700/5700/6500 TEU groups for 12 months period & 2500/2700/3500/4250 TEU groups for 24 months period

**New ConTex-Commentary - issued: 08.09.22**

The container market experienced another week with few fixtures concluded and all segments facing downward trends. In general, the growing supply of tonnage is putting pressure on the rates and limiting the length of periods offered. For the first time since pre-covid we are seeing a continuous negative trend on all sizes on a Year-To-Year reference. The 1700TEU are seeing the biggest drop with roughly -9% on a Week-To-Week basis, mainly due to liquidity. From last month, the 1700TEU has seen the 6/12 month rate plummet with USD 10,000. The least affected segments compared to last month are the 5700TEU and 6500TEU as there is limited availability and the figures are largely based on speculation and natural reaction to the smaller feeders, The current month is down 13,2% from last, while on an overall yearly comparison the contex is down 11,6%. With lack of tonnage in the larger segments, the small to middle size feeders will most likely have the most activity and therefore the biggest changes in charter rates. Even with availability of supply in the 4250TEU and above increasing in 2023, historically the amount of ship is still consider low.

New ConTex Development											
Vessel type	Evaluated Period	Today	Week-on-Week		Month-on-Month			Year-on-Year			
		08.09.22	01.09.22	Change	Change	09.08.22	Change	Change	09.09.21	Change	Change
<b>New ConTex*</b>		<b>2733</b>	2908	-175	↓ -6,0%	3148	-415	↓ -13,2%	3091	-358	↓ -11,6%
1100 TEU	6 mos	\$31.895	\$33.392	-\$1.497	↓ -4,5%	\$36.614	-\$4.719	↓ -12,9%	\$41.921	-\$10.026	↓ -23,9%
	12 mos	\$28.555	\$29.938	-\$1.383	↓ -4,6%	\$33.118	-\$4.563	↓ -13,8%	\$35.742	-\$7.187	↓ -20,1%
1700 TEU	6 mos	\$47.550	\$52.279	-\$4.729	↓ -9,0%	\$58.273	-\$10.723	↓ -18,4%	\$61.579	-\$14.029	↓ -22,8%
	12 mos	\$43.159	\$47.267	-\$4.108	↓ -8,7%	\$52.927	-\$9.768	↓ -18,5%	\$47.171	-\$4.012	↓ -8,5%
2500 TEU	12 mos	\$62.986	\$66.909	-\$3.923	↓ -5,9%	\$72.709	-\$9.723	↓ -13,4%	\$69.600	-\$6.614	↓ -9,5%
	24 mos	\$46.464	\$49.400	-\$2.936	↓ -5,9%	\$52.995	-\$6.531	↓ -12,3%	\$43.909	\$2.555	↑ 5,8%
2700 TEU	12 mos	\$69.941	\$73.923	-\$3.982	↓ -5,4%	\$79.418	-\$9.477	↓ -11,9%	\$76.605	-\$6.664	↓ -8,7%
	24 mos	\$50.873	\$54.336	-\$3.463	↓ -6,4%	\$57.327	-\$6.454	↓ -11,3%	\$47.086	\$3.787	↑ 8,0%
3500 TEU	12 mos	\$77.550	\$82.390	-\$4.840	↓ -5,9%	\$88.835	-\$11.285	↓ -12,7%	\$82.410	-\$4.860	↓ -5,9%
	24 mos	\$59.550	\$62.990	-\$3.440	↓ -5,5%	\$65.965	-\$6.415	↓ -9,7%	\$51.925	\$7.625	↑ 14,7%
4250 TEU	12 mos	\$91.770	\$96.900	-\$5.130	↓ -5,3%	\$102.050	-\$10.280	↓ -10,1%	\$90.675	\$1.095	↗ 1,2%
	24 mos	\$67.720	\$71.100	-\$3.380	↓ -4,8%	\$76.290	-\$8.570	↓ -11,2%	\$63.010	\$4.710	↑ 7,5%
5700 TEU	12 mos	\$110.567	\$116.389	-\$5.822	↓ -5,0%	\$119.500	-\$8.933	↓ -7,5%	\$101.689	\$8.878	↑ 8,7%
6500 TEU	12 mos	\$116.972	\$121.833	-\$4.861	↓ -4,0%	\$125.400	-\$8.428	↓ -6,7%	\$109.389	\$7.583	↑ 6,9%



**Disclaimer**

The brand NewConTex is copyrighted by Verband Hamburger und Bremer Schiffsmakler e.V. ("VHBS e.V.") and is protected by law. The NewConTex may be published only with the source reference © VHBS e.V. It is distributed to the general public for information purposes only and cannot be relied upon as a trading recommendation and does not constitute a solicitation to trade. The reported information is obtained from market sources. While every effort has been made to ensure the accuracy and the completeness of the NewConTex, VHBS e.V. makes no representations, conditions or warranties of any kind, express or implied, about the completeness, accuracy, reliability, or suitability of the NewConTex. Any reliance you place on the NewConTex is therefore strictly at your own risk. Neither VHBS e.V. nor any of its subsidiaries or affiliates nor any employee of the foregoing shall be liable or have any responsibility for any loss, liability or damage, cost or expense including without limitation, indirect or consequential loss or damage, or any loss or damage whatsoever arising from loss of data or profits arising out of, or in connection with, the use of and the reliance on the NewConTex, save for death or personal injury arising from VHBS e.V. negligence and fraudulent misrepresentation that cannot, under German law, be excluded.