



New ConTex Container Ship Time Charter Assessment Index

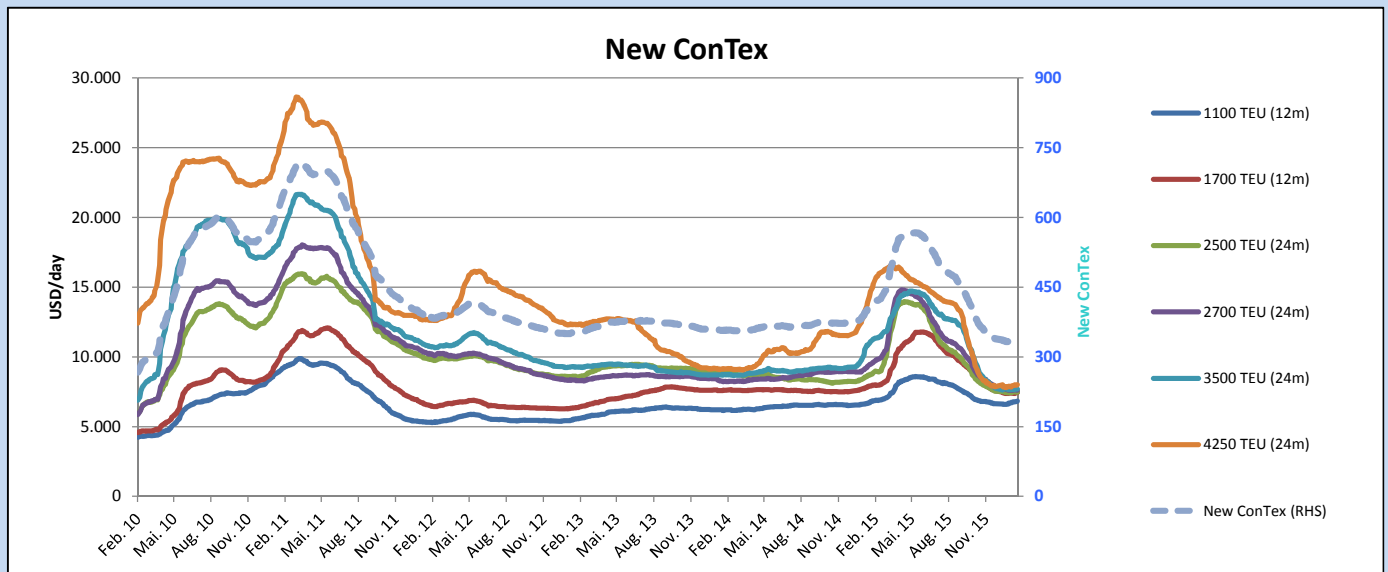
New ConTex*		336	
11.02.16		12 mos	24 mos
Geared	1100 TEU	\$6.818	n.a.
	1700 TEU	\$7.444	
	2500 TEU	\$6.061	
Gearless	2700 TEU	\$6.263	\$7.460
	3500 TEU	\$5.962	\$7.691
	4250 TEU	\$5.933	\$7.995

Legend		
↑	up	+ 2% or more
↗	steady up	from +1% to +1,9%
→	steady	+/- 1%
↘	steady down	from -1% to -1,9%
↓	down	- 2% or less

*New ConTex evaluation is EXCLUDING 2500/2700/3500/4250 TEU groups for 12 months period

New ConTex-Commentary - issued:	11.02.16
<p>Whilst the container charter market experienced a brief rallye during the previous week, we have experienced during the week the expected lull, which dominated the market situation this week due to the Lunar New Year festivities.</p> <p>The New ConTex is continuing its sideways trend and ends the week again at 336 points, which is no difference on a w-o-w-basis and 2 points more than one month ago. Similar to last week, there are some classes developing slightly positive, others again slightly negative.</p> <p>In general it can be said that the bottoming out process is in full force and trend-setting developments will likely be seen in a couple of weeks time only.</p>	

New ConTex Development												
Vessel type	Evaluated Period	Today	Week-on-Week		Month-on-Month			Year-on-Year				
		11.02.16	04.02.16	Change	Change	12.01.16	Change	Change	10.02.15	Change	Change	
New ConTex*		336	336	0	→	0,0%	334	2	0,6%	407	-71	-17,4%
New ConTex	1100 TEU	\$6.818	\$6.785	\$33	→	0,5%	\$6.585	\$233	3,5%	\$6.713	105	1,6%
	1700 TEU	\$7.444	\$7.376	\$68	→	0,9%	\$7.370	\$74	1,0%	\$7.895	-451	-5,7%
	2500 TEU	\$7.460	\$7.483	-\$23	→	-0,3%	\$7.487	-\$27	-0,4%	\$8.711	-1.251	-14,4%
	2700 TEU	\$7.607	\$7.637	-\$30	→	-0,4%	\$7.682	-\$75	-1,0%	\$9.435	-1.828	-19,4%
	3500 TEU	\$7.691	\$7.686	\$5	→	0,1%	\$7.764	-\$73	-0,9%	\$10.987	-3.296	-30,0%
	4250 TEU	\$7.995	\$7.988	\$7	→	0,1%	\$7.855	\$140	1,8%	\$14.356	-6.361	-44,3%
New ConTex	2500 TEU	\$6.061	\$6.091	-\$30	→	-0,5%	\$6.053	\$8	0,1%	\$7.482	-1.421	-19,0%
	2700 TEU	\$6.263	\$6.293	-\$30	→	-0,5%	\$6.275	-\$12	-0,2%	\$8.245	-1.982	-24,0%
	3500 TEU	\$5.962	\$5.933	\$29	→	0,5%	\$5.978	-\$16	-0,3%	\$9.832	-3.870	-39,4%
	4250 TEU	\$5.933	\$5.913	\$20	→	0,3%	\$5.828	\$105	1,8%	\$12.515	-6.582	-52,6%



Disclaimer

The brand NewConTex is copyrighted by Vereinigung Hamburger Schiffsmakler und Schiffsagenten e.V. ("VHSS e.V.") and is protected by law. The NewConTex may be published only with the source reference © VHSS e.V. It is distributed to the general public for information purposes only and cannot be relied upon as a trading recommendation and does not constitute a solicitation to trade. The reported information is obtained from market sources. While every effort has been made to ensure the accuracy and the completeness of the NewConTex, VHSS e.V. makes no representations, conditions or warranties of any kind, express or implied, about the completeness, accuracy, reliability, or suitability of the NewConTex. Any reliance you place on the NewConTex is therefore strictly at your own risk. Neither VHSS e.V. nor any of its subsidiaries or affiliates nor any employee of the foregoing shall be liable or have any responsibility for any loss, liability or damage, cost or expense including without limitation, indirect or consequential loss or damage, or any loss or damage whatsoever arising from loss of data or profits arising out of, or in connection with, the use of and the reliance on the NewConTex, save for death or personal injury arising from VHSS e.V. negligence and fraudulent misrepresentation that cannot, under German law, be excluded.