



## New ConTex Container Ship Time Charter Assessment Index

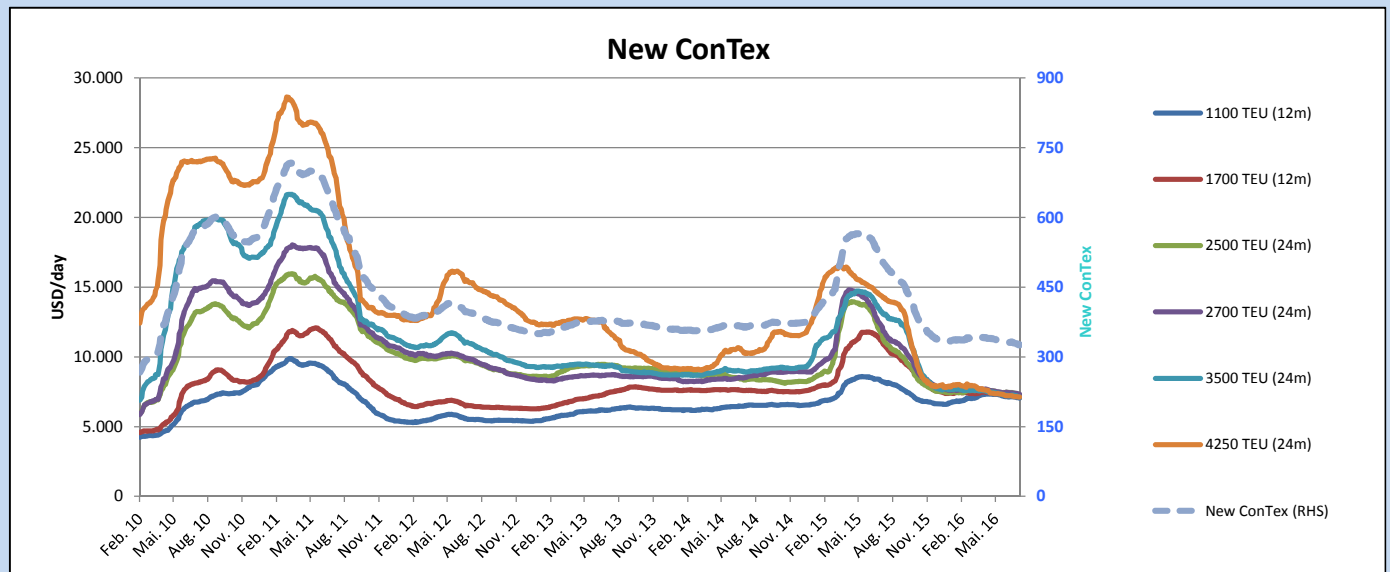
New ConTex*		326	
28.07.16		12 mos	24 mos
Gearless	1100 TEU	\$7.049	n.a.
	1700 TEU	\$7.146	
	2500 TEU	\$6.022	
Gearless	2700 TEU	\$6.133	\$7.312
	3500 TEU	\$5.516	\$7.126
	4250 TEU	\$5.009	\$7.125

Legend		
↑	up	+ 2% or more
↗	steady up	from +1% to +1,9%
→	steady	+/- 1 %
↘	steady down	from -1% to -1,9%
↓	down	- 2% or less

\*New ConTex evaluation is EXCLUDING 2500/2700/3500/4250 TEU groups for 12 months period

New ConTex-Commentary - issued:	28.07.16
<p>Another quiet week within the summer season passed by without any noteworthy fixtures to be mentioned.</p> <p>All sizes within the ConTex remain on steady low and tiring levels with a continuous minor downward trend seen at -0,2% to -0,9% within the different segments.</p> <p>A steady amount of fixtures are still being concluded caused by the renegotiations of the various flexible period deals from earlier this year enabling Charterers to once again save a few dollars on their chartered vessels. This results in even further financial pressure on the owning side at mainly below OPEX levels. It'll be interesting to see once the financial burden will finally affect the overall reliability of the liner services caused by off-hires. Perhaps Charterers and especially also the Shippers might finally take a different approach towards their important hardware suppliers once everything starts falling apart.</p>	

Vessel type		Evaluated Period	New ConTex Development									
			Today 28.07.16	Week-on-Week		Month-on-Month		Year-on-Year				
			21.07.16	Change	Change	28.06.16	Change	Change	28.07.15	Change	Change	
<b>New ConTex*</b>			<b>326</b>	328	-2	↔ -0,6%	332	-6	-1,8%	510	-184	-36,1%
New ConTex	1100 TEU	12 mos	\$7.049	\$7.073	-\$24	↔ -0,3%	\$7.139	-\$90	-1,3%	\$8.236	-1.187	-14,4%
	1700 TEU		\$7.146	\$7.193	-\$47	↔ -0,7%	\$7.334	-\$188	-2,6%	\$11.062	-3.916	-35,4%
	2500 TEU		\$7.294	\$7.359	-\$65	↔ -0,9%	\$7.455	-\$161	-2,2%	\$11.570	-4.276	-37,0%
	2700 TEU	24 mos	\$7.312	\$7.367	-\$55	↔ -0,7%	\$7.437	-\$125	-1,7%	\$12.130	-4.818	-39,7%
	3500 TEU		\$7.126	\$7.191	-\$65	↔ -0,9%	\$7.248	-\$122	-1,7%	\$13.152	-6.026	-45,8%
	4250 TEU		\$7.125	\$7.136	-\$11	↔ -0,2%	\$7.215	-\$90	-1,2%	\$14.329	-7.204	-50,3%
2500 TEU	12 mos	\$6.022	\$6.040	-\$18	↔ -0,3%	\$6.114	-\$92	-1,5%	\$10.241	-4.219	-41,2%	
2700 TEU		\$6.133	\$6.187	-\$54	↔ -0,9%	\$6.209	-\$76	-1,2%	\$10.990	-4.857	-44,2%	
3500 TEU		\$5.516	\$5.498	\$18	↔ 0,3%	\$5.615	-\$99	-1,8%	\$12.077	-6.561	-54,3%	
4250 TEU		\$5.009	\$5.055	-\$46	↔ -0,9%	\$5.101	-\$92	-1,8%	\$13.201	-8.192	-62,1%	



**Disclaimer**

The brand NewConTex is copyrighted by Vereinigung Hamburger Schiffsmakler und Schiffsagenten e.V. ("VHSS e.V.") and is protected by law. The NewConTex may be published only with the source reference © VHSS e.V. It is distributed to the general public for information purposes only and cannot be relied upon as a trading recommendation and does not constitute a solicitation to trade. The reported information is obtained from market sources. While every effort has been made to ensure the accuracy and the completeness of the NewConTex, VHSS e.V. makes no representations, conditions or warranties of any kind, express or implied, about the completeness, accuracy, reliability, or suitability of the NewConTex. Any reliance you place on the NewConTex is therefore strictly at your own risk. Neither VHSS e.V. nor any of its subsidiaries or affiliates nor any employee of the foregoing shall be liable or have any responsibility for any loss, liability or damage, cost or expense including without limitation, indirect or consequential loss or damage, or any loss or damage whatsoever arising from loss of data or profits arising out of, or in connection with, the use of and the reliance on the NewConTex, save for death or personal injury arising from VHSS e.V. negligence and fraudulent misrepresentation that cannot, under German law, be excluded.