



New ConTex Container Ship Time Charter Assessment Index

New ConTex*		328	
21.07.16		12 mos	24 mos
Gearless	1100 TEU	\$7.073	n.a.
	1700 TEU	\$7.193	
	2500 TEU	\$6.040	
Gearless	2700 TEU	\$6.187	\$7.359
	3500 TEU	\$5.498	\$7.191
	4250 TEU	\$5.055	\$7.136

Legend		
↑	up	+ 2% or more
↗	steady up	from +1% to +1,9%
→	steady	+/- 1 %
↘	steady down	from -1% to -1,9%
↓	down	- 2% or less

*New ConTex evaluation is EXCLUDING 2500/2700/3500/4250 TEU groups for 12 months period

New ConTex-Commentary - issued:	21.07.16
--	-----------------

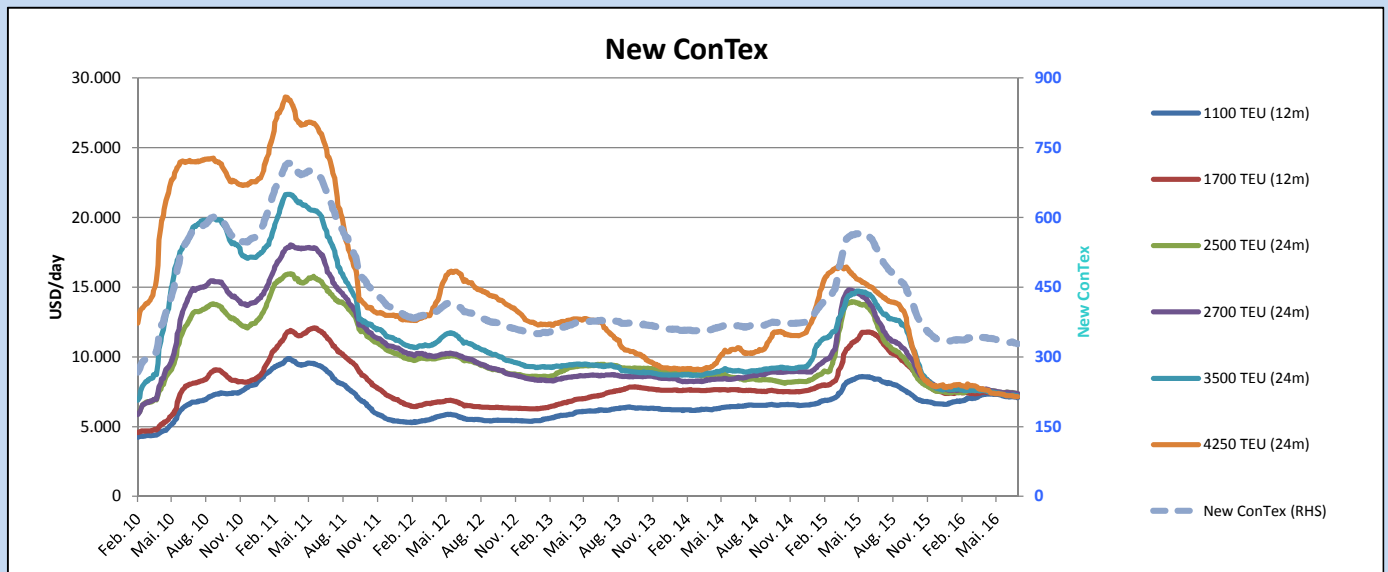
Summer holidays in many countries are approaching and less activity is already visible.

The New ConTex dropped further 2 points from last week and almost all classes are further down, but only marginally. Neither size is showing any sign of recovery and due to the forthcoming summer season not much of an improvement, if any, can be expected during the weeks.

On a month on month basis as well all sizes are down by roughly 1% and only the 3500 TEU for 12 mos lost 2,4%.

On a year on year basis the rates have dropped considerably upto 62,2% for the Panamax size of 4250 TEU for 12 mos. Only the 1100 TEU size is almost keeping its level being down by a bit more than 15%.

Vessel type		Evaluated Period	New ConTex Development									
			Today 21.07.16	Week-on-Week		Month-on-Month			Year-on-Year			
			14.07.16	Change	Change	21.06.16	Change	Change	21.07.15	Change	Change	
New ConTex*			330	-2	→ -0,6%	332	-4	-1,2%	521	-193	-37,0%	
New ConTex	1100 TEU	12 mos	\$7.073	\$7.119	-\$46	→ -0,6%	\$7.149	-\$76	-1,1%	\$8.385	-1.312	-15,6%
	1700 TEU		\$7.193	\$7.272	-\$79	→ -1,1%	\$7.352	-\$159	-2,2%	\$11.335	-4.142	-36,5%
	2500 TEU		\$7.359	\$7.390	-\$31	→ -0,4%	\$7.454	-\$95	-1,3%	\$11.909	-4.550	-38,2%
	2700 TEU	24 mos	\$7.367	\$7.401	-\$34	→ -0,5%	\$7.456	-\$89	-1,2%	\$12.418	-5.051	-40,7%
	3500 TEU		\$7.191	\$7.237	-\$46	→ -0,6%	\$7.261	-\$70	-1,0%	\$13.435	-6.244	-46,5%
	4250 TEU		\$7.136	\$7.151	-\$15	→ -0,2%	\$7.223	-\$87	-1,2%	\$14.479	-7.343	-50,7%
2500 TEU	12 mos	\$6.040	\$6.078	-\$38	→ -0,6%	\$6.088	-\$48	-0,8%	\$10.607	-4.567	-43,1%	
2700 TEU		\$6.187	\$6.211	-\$24	→ -0,4%	\$6.198	-\$11	-0,2%	\$11.258	-5.071	-45,0%	
3500 TEU		\$5.498	\$5.519	-\$21	→ -0,4%	\$5.635	-\$137	-2,4%	\$12.378	-6.880	-55,6%	
4250 TEU		\$5.055	\$5.041	\$14	→ 0,3%	\$5.117	-\$62	-1,2%	\$13.377	-8.322	-62,2%	



Disclaimer

The brand NewConTex is copyrighted by Vereinigung Hamburger Schiffsmakler und Schiffsagenten e.V. ("VHSS e.V.") and is protected by law. The NewConTex may be published only with the source reference © VHSS e.V. It is distributed to the general public for information purposes only and cannot be relied upon as a trading recommendation and does not constitute a solicitation to trade. The reported information is obtained from market sources. While every effort has been made to ensure the accuracy and the completeness of the NewConTex, VHSS e.V. makes no representations, conditions or warranties of any kind, express or implied, about the completeness, accuracy, reliability, or suitability of the NewConTex. Any reliance you place on the NewConTex is therefore strictly at your own risk. Neither VHSS e.V. nor any of its subsidiaries or affiliates nor any employee of the foregoing shall be liable or have any responsibility for any loss, liability or damage, cost or expense including without limitation, indirect or consequential loss or damage, or any loss or damage whatsoever arising from loss of data or profits arising out of, or in connection with, the use of and the reliance on the NewConTex, save for death or personal injury arising from VHSS e.V. negligence and fraudulent misrepresentation that cannot, under German law, be excluded.