



New ConTex Container Ship Time Charter Assessment Index

New ConTex*		330	
14.07.16		12 mos	24 mos
Geared	1100 TEU	\$7.119	n.a.
	1700 TEU	\$7.272	
	2500 TEU	\$6.078	
Gearless	2700 TEU	\$6.211	\$7.401
	3500 TEU	\$5.519	\$7.237
	4250 TEU	\$5.041	\$7.151

Legend		
↑	up	+ 2% or more
↗	steady up	from +1% to +1,9%
→	steady	+/- 1%
↘	steady down	from -1% to -1,9%
↓	down	- 2% or less

*New ConTex evaluation is EXCLUDING 2500/2700/3500/4250 TEU groups for 12 months period

New ConTex-Commentary - issued:	14.07.16
--	-----------------

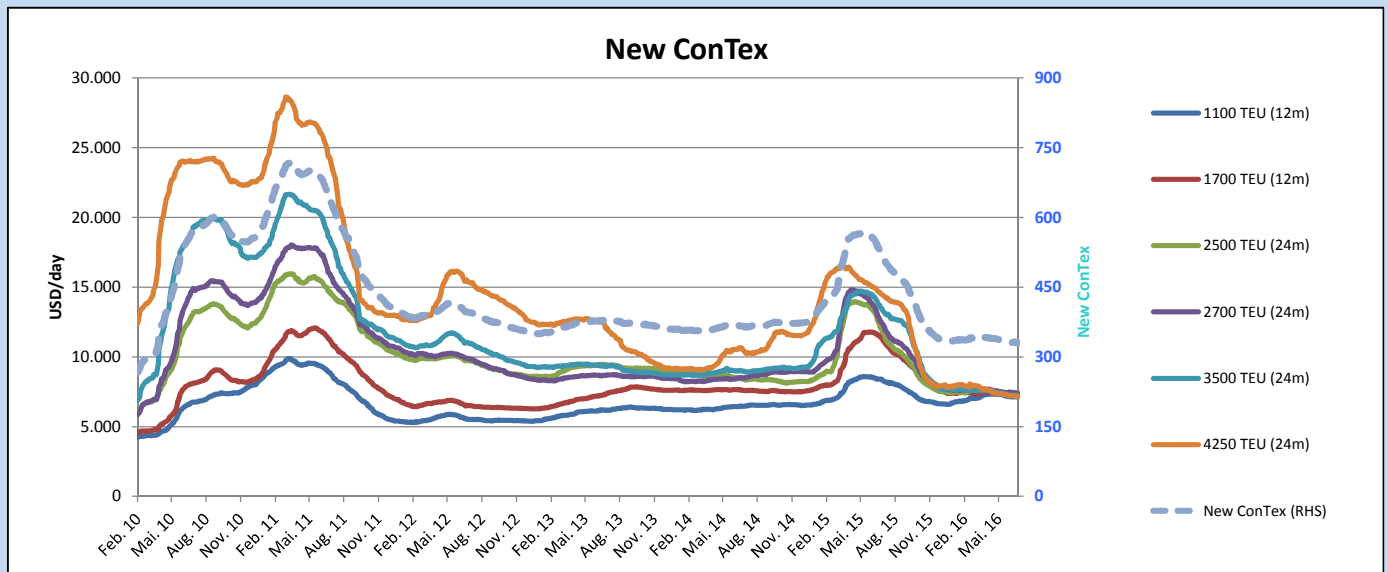
The New ConTex dropped 2 points in the last week and now stands at 330 – representing a 0.6% drop week-on-week. However, from this time last year, when the New ConTex stood at 531 – it represents a substantial 37.9% drop.

Unlike last week, however, there were no increases in any sizes - after showing a slight improvement last week, 1100 TEU dropped 0.4%, whilst 1700 TEU shed a further 0.5%.

In the mid sizes, the 24 month rates for both 2500 TEU and 2700 TEU again dropped, suffering 0.7% and 0.4% drops respectively. For the 12 month rates they stayed fairly stable with 2500 TEU dropping 0.1% and 2700 TEU remaining the same.

The 3500 TEU and 4250 TEU continue to struggle and suffered further drops on both the 12 month and 24 month rates. The 24 month rate for 4250 TEU dropped by 1% and the 12 month rate fell a further 0.5%. As a result there has been more than a 50% drop in both the 12 and 24 month rates year-on-year for this size. None of these figures are remarkable given the recent trends and the fact we are in high summer.

Vessel type		Evaluated Period	New ConTex Development									
			Today 14.07.16	Week-on-Week		Month-on-Month		Year-on-Year				
			07.07.16	Change	Change	14.06.16	Change	Change	14.07.15	Change	Change	
New ConTex*			330	332	-2	↔ -0,6%	333	-3	-0,9%	531	-201	-37,9%
New ConTex	1100 TEU	12 mos	\$7.119	\$7.147	-\$28	↔ -0,4%	\$7.200	-\$81	-1,1%	\$8.402	-1.283	-15,3%
	1700 TEU		\$7.272	\$7.312	-\$40	↔ -0,5%	\$7.378	-\$106	-1,4%	\$11.528	-4.256	-36,9%
	2500 TEU	24 mos	\$7.390	\$7.444	-\$54	↔ -0,7%	\$7.419	-\$29	-0,4%	\$12.292	-4.902	-39,9%
	2700 TEU		\$7.401	\$7.434	-\$33	↔ -0,4%	\$7.421	-\$20	-0,3%	\$12.739	-5.338	-41,9%
	3500 TEU		\$7.237	\$7.266	-\$29	↔ -0,4%	\$7.296	-\$59	-0,8%	\$13.707	-6.470	-47,2%
4250 TEU	\$7.151	\$7.225	-\$74	↘ -1,0%	\$7.309	-\$158	-2,2%	\$14.633	-7.482	-51,1%		
	2500 TEU	12 mos	\$6.078	\$6.084	-\$6	↔ -0,1%	\$6.057	\$21	0,3%	\$10.999	-4.921	-44,7%
	2700 TEU		\$6.211	\$6.208	\$3	↔ 0,0%	\$6.176	\$35	0,6%	\$11.654	-5.443	-46,7%
	3500 TEU		\$5.519	\$5.553	-\$34	↔ -0,6%	\$5.639	-\$120	-2,1%	\$12.664	-7.145	-56,4%
	4250 TEU		\$5.041	\$5.068	-\$27	↔ -0,5%	\$5.143	-\$102	-2,0%	\$13.432	-8.391	-62,5%



Disclaimer

The brand NewConTex is copyrighted by Vereinigung Hamburger Schiffsmakler und Schiffsagenten e.V. ("VHSS e.V.") and is protected by law. The NewConTex may be published only with the source reference © VHSS e.V. It is distributed to the general public for information purposes only and cannot be relied upon as a trading recommendation and does not constitute a solicitation to trade. The reported information is obtained from market sources. While every effort has been made to ensure the accuracy and the completeness of the NewConTex, VHSS e.V. makes no representations, conditions or warranties of any kind, express or implied, about the completeness, accuracy, reliability, or suitability of the NewConTex. Any reliance you place on the NewConTex is therefore strictly at your own risk. Neither VHSS e.V. nor any of its subsidiaries or affiliates nor any employee of the foregoing shall be liable or have any responsibility for any loss, liability or damage, cost or expense including without limitation, indirect or consequential loss or damage, or any loss or damage whatsoever arising from loss of data or profits arising out of, or in connection with, the use of and the reliance on the NewConTex, save for death or personal injury arising from VHSS e.V. negligence and fraudulent misrepresentation that cannot, under German law, be excluded.