



## New ConTex Container Ship Time Charter Assessment Index

New ConTex*		331	
30.06.16		12 mos	24 mos
Gearless	1100 TEU	\$7.134	n.a.
	1700 TEU	\$7.332	
	2500 TEU	\$6.122	\$7.450
Gearless	2700 TEU	\$6.203	\$7.428
	3500 TEU	\$5.602	\$7.225
	4250 TEU	\$5.094	\$7.212

Legend		
↑	up	+ 2% or more
↗	steady up	from +1% to +1,9%
→	steady	+/- 1 %
↘	steady down	from -1% to -1,9%
↓	down	- 2% or less

\*New ConTex evaluation is EXCLUDING 2500/2700/3500/4250 TEU groups for 12 months period

<b>New ConTex-Commentary - issued:</b>	<b>30.06.16</b>
--	-----------------

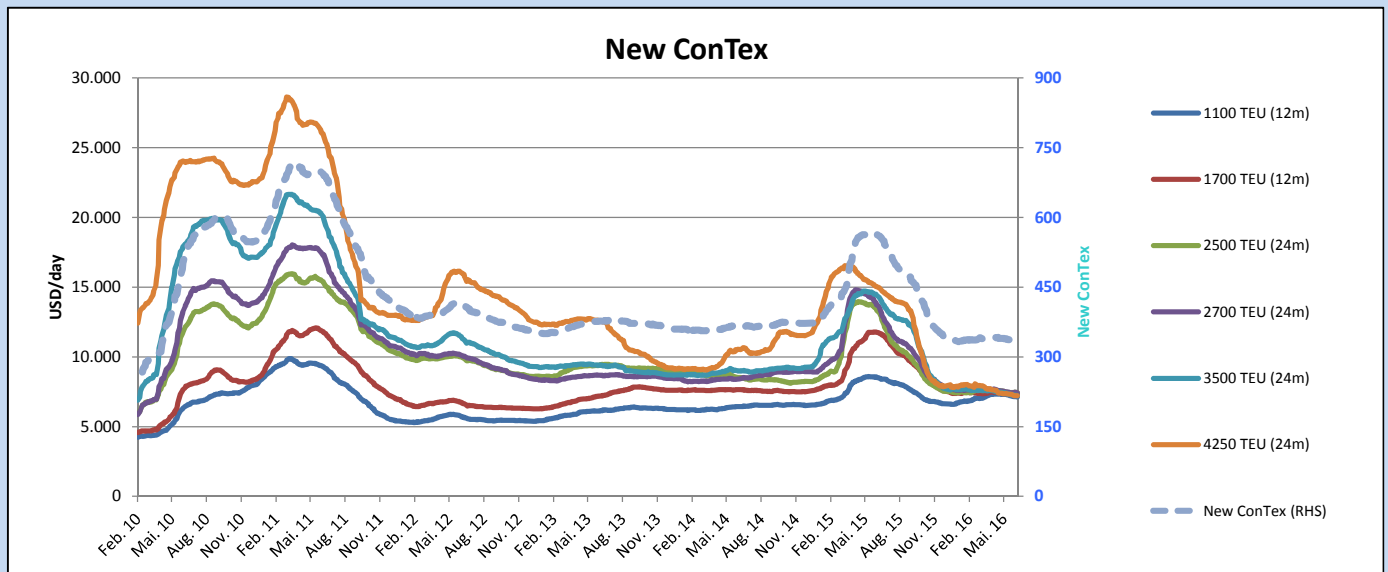
Half a year is elapsed now and the New ConTex is continuing it's slow but steady negative trend - not surprisingly as the market is in the midst of the summer lull. The entire index lost only marginally from last week down to 331 points on 30.June representing a change of -0,3% on w-o-w basis only.

It appears the market in pausing and sort of stabilising at low levels.

The smaller size segment, i.e. 1100 TEU and 1700 TEU is exceedingly affected by the downturn of activity worldwide and only about 10 fixture in forementioned sizes have been reported during last week. This is not necessarily reflected in the New ConTex figures, which are only softening by a negligible 0,1%-0,2%

Bigger vessels of 2500 - 4250 TEU in size are still struggling to find a charter caused by lack of activity/demand resulting in stagnation or further softening of hire rates.

		New ConTex Development										
Vessel type	Evaluated Period	Today	Week-on-Week		Month-on-Month			Year-on-Year				
		30.06.16	23.06.16	Change	Change	31.05.16	Change	Change	30.06.15	Change	Change	
<b>New ConTex*</b>		<b>331</b>	332	-1	↔	-0,3%	337	-6	-1,8%	553	-222	-40,1%
New ConTex	1100 TEU	\$7.134	\$7.147	-\$13	↔	-0,2%	\$7.299	-\$165	-2,3%	\$8.497	-1.363	-16,0%
	1700 TEU	\$7.332	\$7.342	-\$10	↔	-0,1%	\$7.435	-\$103	-1,4%	\$11.737	-4.405	-37,5%
	2500 TEU	\$7.450	\$7.461	-\$11	↔	-0,1%	\$7.464	-\$14	-0,2%	\$13.221	-5.771	-43,7%
	2700 TEU	\$7.428	\$7.466	-\$38	↔	-0,5%	\$7.496	-\$68	-0,9%	\$13.633	-6.205	-45,5%
	3500 TEU	\$7.225	\$7.259	-\$34	↔	-0,5%	\$7.405	-\$180	-2,4%	\$14.298	-7.073	-49,5%
	4250 TEU	\$7.212	\$7.223	-\$11	↔	-0,2%	\$7.366	-\$154	-2,1%	\$14.970	-7.758	-51,8%
Gearless	2500 TEU	\$6.122	\$6.106	\$16	↔	0,3%	\$6.062	\$60	1,0%	\$12.025	-5.903	-49,1%
	2700 TEU	\$6.203	\$6.201	\$2	↔	0,0%	\$6.132	\$71	1,2%	\$12.442	-6.239	-50,1%
	3500 TEU	\$5.602	\$5.627	-\$25	↔	-0,4%	\$5.688	-\$86	-1,5%	\$13.253	-7.651	-57,7%
	4250 TEU	\$5.094	\$5.117	-\$23	↔	-0,4%	\$5.215	-\$121	-2,3%	\$13.701	-8.607	-62,8%



**Disclaimer**

The brand NewConTex is copyrighted by Vereinigung Hamburger Schiffsmakler und Schiffsagenten e.V. ("VHSS e.V.") and is protected by law. The NewConTex may be published only with the source reference © VHSS e.V. It is distributed to the general public for information purposes only and cannot be relied upon as a trading recommendation and does not constitute a solicitation to trade. The reported information is obtained from market sources. While every effort has been made to ensure the accuracy and the completeness of the NewConTex, VHSS e.V. makes no representations, conditions or warranties of any kind, express or implied, about the completeness, accuracy, reliability, or suitability of the NewConTex. Any reliance you place on the NewConTex is therefore strictly at your own risk. Neither VHSS e.V. nor any of its subsidiaries or affiliates nor any employee of the foregoing shall be liable or have any responsibility for any loss, liability or damage, cost or expense including without limitation, indirect or consequential loss or damage, or any loss or damage whatsoever arising from loss of data or profits arising out of, or in connection with, the use of and the reliance on the NewConTex, save for death or personal injury arising from VHSS e.V. negligence and fraudulent misrepresentation that cannot, under German law, be excluded.