



New ConTex Container Ship Time Charter Assessment Index

New ConTex*		339	
31.03.16		12 mos	24 mos
Gearless	1100 TEU	\$7,055	n.a.
	1700 TEU	\$7,362	
	2500 TEU	\$6,029	
Gearless	2700 TEU	\$6,176	\$7,706
	3500 TEU	\$5,773	\$7,586
	4250 TEU	\$5,661	\$7,903

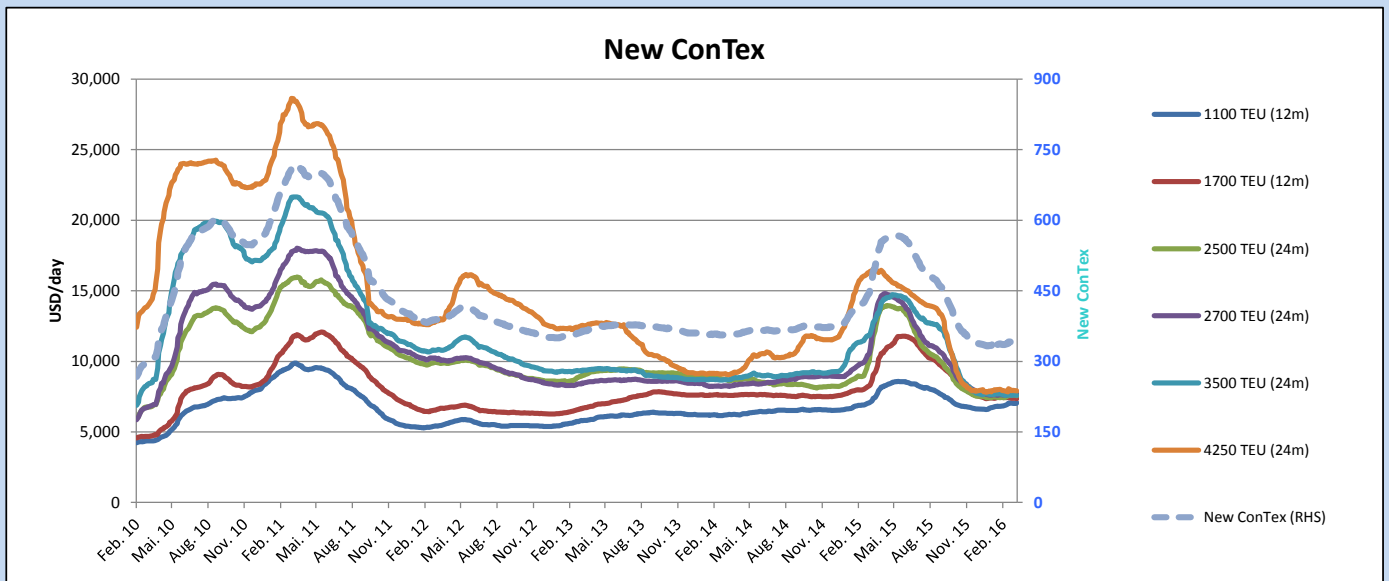
Legend		
↑	up	+ 2% or more
↔	steady up	from +1% to +1,9%
↔	steady	+/- 1 %
↔	steady down	from -1% to -1,9%
↓	down	- 2% or less

*New ConTex evaluation is EXCLUDING 2500/2700/3500/4250 TEU groups for 12 months period

New ConTex-Commentary - issued:	31.03.16
<p>The week ended where it had started, with the New ConTex Index standing at 339. Although the market weakness continues and most sizes were marked slightly down, the declines were modest enough to avoid the Index closing lower this week.</p> <p>The 1100 TEU class was the only component to experience a rise, reflecting a tightening in supply in the smaller feeder sector. It is a fact - as witnessed in previous recessions - that smaller ships are earning rather more than many larger ships.</p> <p>Most of the other sectors suffered only slight declines, typically of 0.1 - 0.2 percentage falls week-on-week. The only significant decline was seen in the 4250 TEU panamax market which continues to face exceedingly challenging conditions; the 12 months rate for 4250 TEUs experienced a 1.4% drop compared to last week.</p>	

New ConTex Development

Vessel type	Evaluated Period	Today 31.03.16	Week-on-Week		Month-on-Month			Year-on-Year				
			24.03.16	Change	Change	01.03.16	Change	Change	31.03.15	Change	Change	
New ConTex*		339	339	0	↔	0.0%	336	3	0.9%	475	-136	-28.6%
New ConTex	1100 TEU	\$7,055	\$7,023	\$32	↔	0.5%	\$6,874	\$181	2.6%	\$7,210	-155	-2.1%
	1700 TEU	\$7,362	\$7,376	-\$14	↔	-0.2%	\$7,441	-\$79	-1.1%	\$8,682	-1,320	-15.2%
	2500 TEU	\$7,574	\$7,602	-\$28	↔	-0.4%	\$7,426	\$148	2.0%	\$11,252	-3,678	-32.7%
	2700 TEU	\$7,706	\$7,718	-\$12	↔	-0.2%	\$7,613	\$93	1.2%	\$11,921	-4,215	-35.4%
	3500 TEU	\$7,586	\$7,604	-\$18	↔	-0.2%	\$7,580	\$6	0.1%	\$12,442	-4,856	-39.0%
	4250 TEU	\$7,903	\$7,921	-\$18	↔	-0.2%	\$7,895	\$8	0.1%	\$16,338	-8,435	-51.6%
Gearless	2500 TEU	\$6,029	\$6,034	-\$5	↔	-0.1%	\$6,024	\$5	0.1%	\$9,931	-3,902	-39.3%
	2700 TEU	\$6,176	\$6,202	-\$26	↔	-0.4%	\$6,229	-\$53	-0.9%	\$10,430	-4,254	-40.8%
	3500 TEU	\$5,773	\$5,787	-\$14	↔	-0.2%	\$5,854	-\$81	-1.4%	\$10,963	-5,190	-47.3%
	4250 TEU	\$5,661	\$5,743	-\$82	↔	-1.4%	\$5,913	-\$252	-4.3%	\$14,848	-9,187	-61.9%



Disclaimer

The brand NewConTex is copyrighted by Vereinigung Hamburger Schiffsmakler und Schiffsagenten e.V. ("VHSS e.V.") and is protected by law. The NewConTex may be published only with the source reference © VHSS e.V. It is distributed to the general public for information purposes only and cannot be relied upon as a trading recommendation and does not constitute a solicitation to trade. The reported information is obtained from market sources. While every effort has been made to ensure the accuracy and the completeness of the NewConTex, VHSS e.V. makes no representations, conditions or warranties of any kind, express or implied, about the completeness, accuracy, reliability, or suitability of the NewConTex. Any reliance you place on the NewConTex is therefore strictly at your own risk. Neither VHSS e.V. nor any of its subsidiaries or affiliates nor any employee of the foregoing shall be liable or have any responsibility for any loss, liability or damage, cost or expense including without limitation, indirect or consequential loss or damage, or any loss or damage whatsoever arising from loss of data or profits arising out of, or in connection with, the use of and the reliance on the NewConTex, save for death or personal injury arising from VHSS e.V. negligence and fraudulent misrepresentation that cannot, under German law, be excluded.