



## New ConTex Container Ship Time Charter Assessment Index

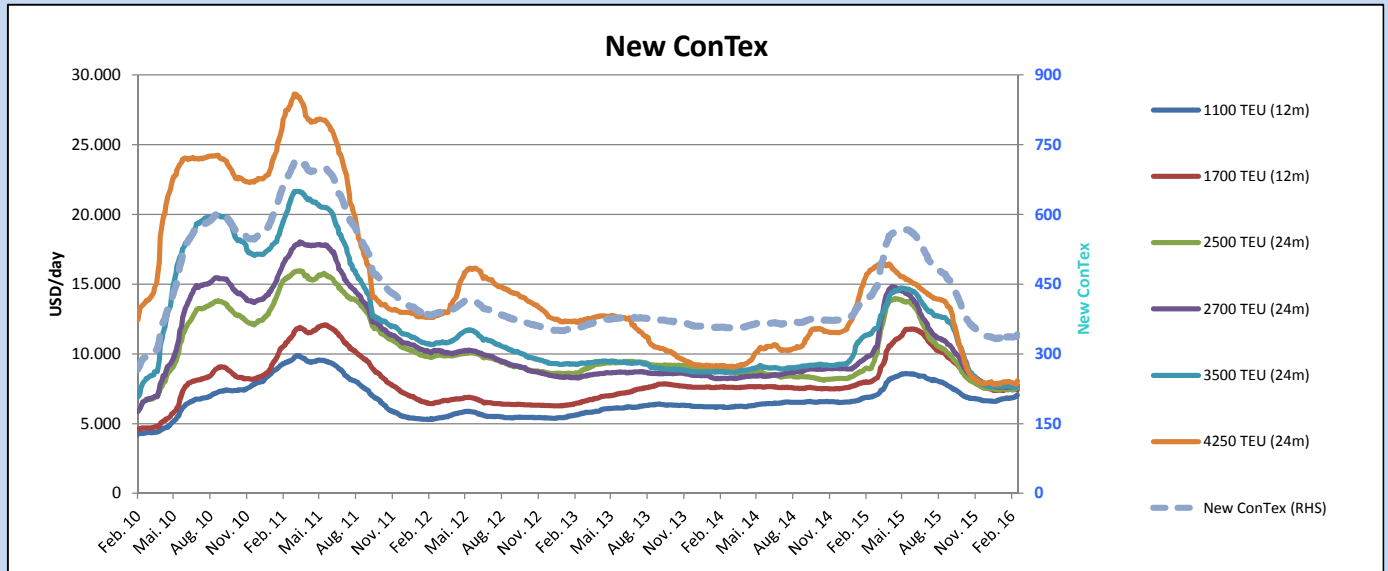
New ConTex*		341	
10.03.16		12 mos	24 mos
Geared	1100 TEU	\$7.045	n.a.
	1700 TEU	\$7.423	
	2500 TEU	\$6.020	\$7.595
Gearless	2700 TEU	\$6.292	\$7.750
	3500 TEU	\$5.863	\$7.660
	4250 TEU	\$5.802	\$8.070

Legend		
↑	up	+ 2% or more
↗	steady up	from +1% to +1,9%
→	steady	+/- 1%
↘	steady down	from -1% to -1,9%
↓	down	- 2% or less

\*New ConTex evaluation is EXCLUDING 2500/2700/3500/4250 TEU groups for 12 months period

New ConTex-Commentary - issued:	10.03.16
<p>This week the New ConTex increased by four points. This marks the index's biggest jump in one week since May 2015. Even though this is positive news one has to keep in mind that the charter market is still in the doldrums.</p> <p>For the twelve months-period evaluation figures improved for smaller vessel sizes as 1100 TEU, 2500 TEU and 2700 TEU vessels, while 1700 TEU vessels and Panamaxes (3500 and 4250 TEU) suffered losses. The 24 months-period climbed for all four evaluated vessel classes between 0.6 and 2.4%.</p> <p>The overall rise of the index stems mainly from significant improvements for 1100 TEU vessels (1.9% at 12 months basis), the 2700 TEU (1.8% at 24 months basis) and the 4250 TEU (2.4% at 24 months basis). While in the y-o-y comparison the index is down by -19.8%, in a m-o-m comparison it rose by 1.2%. Although there is still quite some way to go, the development of the New ConTex suggests that expectations improved.</p>	

		New ConTex Development											
Vessel type	Evaluated Period	Today	Week-on-Week		Month-on-Month			Year-on-Year					
		10.03.16	03.03.16	Change	Change	09.02.16	Change	Change	10.03.15	Change	Change		
<b>New ConTex*</b>		<b>341</b>	337	4	↗	1,2%	337	4	1,2%	425	-84	-19,8%	
New ConTex	12 mos	1100 TEU	\$7.045	\$6.916	\$129	↗	1,9%	\$6.810	\$235	3,5%	\$6.909	136	2,0%
		1700 TEU	\$7.423	\$7.437	-\$14	→	-0,2%	\$7.435	-\$12	-0,2%	\$8.010	-587	-7,3%
		2500 TEU	\$7.595	\$7.527	\$68	↗	0,9%	\$7.473	\$122	1,6%	\$8.977	-1.382	-15,4%
	24 mos	2700 TEU	\$7.750	\$7.614	\$136	↗	1,8%	\$7.619	\$131	1,7%	\$9.920	-2.170	-21,9%
		3500 TEU	\$7.660	\$7.618	\$42	↗	0,6%	\$7.698	-\$38	-0,5%	\$11.470	-3.810	-33,2%
		4250 TEU	\$8.070	\$7.881	\$189	↑	2,4%	\$7.982	\$88	1,1%	\$16.053	-7.983	-49,7%
	12 mos	2500 TEU	\$6.020	\$6.012	\$8	↗	0,1%	\$6.077	-\$57	-0,9%	\$7.818	-1.798	-23,0%
		2700 TEU	\$6.292	\$6.244	\$48	↗	0,8%	\$6.269	\$23	0,4%	\$8.736	-2.444	-28,0%
		3500 TEU	\$5.863	\$5.876	-\$13	→	-0,2%	\$5.940	-\$77	-1,3%	\$10.155	-4.292	-42,3%
		4250 TEU	\$5.802	\$5.884	-\$82	↘	-1,4%	\$5.929	-\$127	-2,1%	\$14.460	-8.658	-59,9%



**Disclaimer**

The brand NewConTex is copyrighted by Vereinigung Hamburger Schiffsmakler und Schiffsagenten e.V. ("VHSS e.V.") and is protected by law. The NewConTex may be published only with the source reference © VHSS e.V. It is distributed to the general public for information purposes only and cannot be relied upon as a trading recommendation and does not constitute a solicitation to trade. The reported information is obtained from market sources. While every effort has been made to ensure the accuracy and the completeness of the NewConTex, VHSS e.V. makes no representations, conditions or warranties of any kind, express or implied, about the completeness, accuracy, reliability, or suitability of the NewConTex. Any reliance you place on the NewConTex is therefore strictly at your own risk. Neither VHSS e.V. nor any of its subsidiaries or affiliates nor any employee of the foregoing shall be liable or have any responsibility for any loss, liability or damage, cost or expense including without limitation, indirect or consequential loss or damage, or any loss or damage whatsoever arising from loss of data or profits arising out of, or in connection with, the use of and the reliance on the NewConTex, save for death or personal injury arising from VHSS e.V. negligence and fraudulent misrepresentation that cannot, under German law, be excluded.