



New ConTex Container Ship Time Charter Assessment Index

New ConTex*		335	
07.01.16		12 mos	24 mos
Gearless	1100 TEU	\$6,605	n.a.
	1700 TEU	\$7,432	
	2500 TEU	\$6,143	
Gearless	2700 TEU	\$6,336	\$7,713
	3500 TEU	\$5,975	\$7,731
	4250 TEU	\$5,847	\$7,825

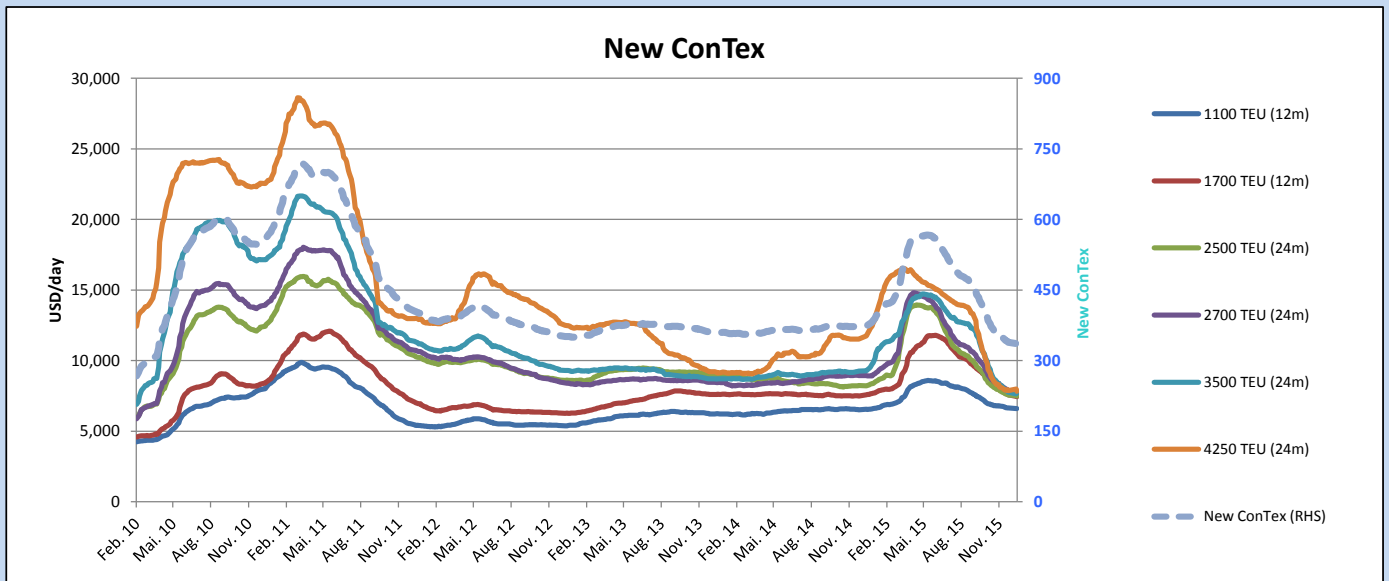
Legend		
↑	up	+ 2% or more
↔	steady up	from +1% to +1,9%
↔	steady	+/- 1%
↔	steady down	from -1% to -1,9%
↓	down	- 2% or less

*New ConTex evaluation is EXCLUDING 2500/2700/3500/4250 TEU groups for 12 months period

New ConTex-Commentary - issued:	07.01.16
<p>The New ConTex closed this week only 4 points down, at 335. Seems the bottom is more or less reached and Charterers already trying to cover forward deliveries at today's level.</p> <p>Especially for the smaller sizes the trend is positive, although rates not increased during the Christmas holidays but we noted less idle tonnage which certainly is the first step to improve the present USD 6,605 for 1100 TEU (minus 0.6%)</p> <p>The 1700 TEU size seems still under pressure with minus 2.0%. It remains to be seen what will happen to the intermediate classes of 2500 TEU and 2700 TEU, presently they are moving sideways respectively slightly down.</p> <p>However, the bigger sizes 3500 TEU (down 0.5%) and 4250 TEU (down 0.6%) reached a level of upto nearly 34% (!) below the Index a year ago and consequently no bigger decrease of rates is expected anymore.</p>	

New ConTex Development

Vessel type	Evaluated Period	Today 07.01.16	comparison to last report		Month-on-Month			Year-on-Year				
			17.12.15	Change	Change	08.12.15	Change	Change	06.01.15	Change	Change	
New ConTex*		335	339	-4	↘ -1.2%	345	-10	-2.9%	375	-40	-10.7%	
New ConTex	12 mos	1100 TEU	\$6,605	\$6,643	-\$38	↘ -0.6%	\$6,706	-\$101	-1.5%	\$6,547	58	0.9%
		1700 TEU	\$7,432	\$7,581	-\$149	↘ -2.0%	\$7,719	-\$287	-3.7%	\$7,581	-149	-2.0%
	24 mos	2500 TEU	\$7,496	\$7,545	-\$49	↘ -0.6%	\$7,693	-\$197	-2.6%	\$8,221	-725	-8.8%
		2700 TEU	\$7,713	\$7,862	-\$149	↘ -1.9%	\$8,061	-\$348	-4.3%	\$8,933	-1,220	-13.7%
		3500 TEU	\$7,731	\$7,769	-\$38	↘ -0.5%	\$7,963	-\$232	-2.9%	\$9,282	-1,551	-16.7%
4250 TEU	\$7,825	\$7,870	-\$45	↘ -0.6%	\$7,923	-\$98	-1.2%	\$11,747	-3,922	-33.4%		
New ConTex	12 mos	2500 TEU	\$6,143	\$6,215	-\$72	↘ -1.2%	\$6,359	-\$216	-3.4%	\$7,045	-902	-12.8%
		2700 TEU	\$6,336	\$6,573	-\$237	↘ -3.6%	\$6,773	-\$437	-6.5%	\$8,027	-1,691	-21.1%
		3500 TEU	\$5,975	\$6,135	-\$160	↘ -2.6%	\$6,303	-\$328	-5.2%	\$8,178	-2,203	-26.9%
		4250 TEU	\$5,847	\$5,895	-\$48	↘ -0.8%	\$5,983	-\$136	-2.3%	\$10,011	-4,164	-41.6%



Disclaimer

The brand NewConTex is copyrighted by Vereinigung Hamburger Schiffsmakler und Schiffsagenten e. V. ("VHSS e.V.") and is protected by law. The NewConTex may be published only with the source reference © VHSS e.V. It is distributed to the general public for information purposes only and cannot be relied upon as a trading recommendation and does not constitute a solicitation to trade. The reported information is obtained from market sources. While every effort has been made to ensure the accuracy and the completeness of the NewConTex, VHSS e.V. makes no representations, conditions or warranties of any kind, express or implied, about the completeness, accuracy, reliability, or suitability of the NewConTex. Any reliance you place on the NewConTex is therefore strictly at your own risk. Neither VHSS e.V. nor any of its subsidiaries or affiliates nor any employee of the foregoing shall be liable or have any responsibility for any loss, liability or damage, cost or expense including without limitation, indirect or consequential loss or damage, or any loss or damage whatsoever arising from loss of data or profits arising out of, or in connection with, the use of and the reliance on the NewConTex, save for death or personal injury arising from VHSS e.V. negligence and fraudulent misrepresentation that cannot, under German law, be excluded.