



New ConTex Container Ship Time Charter Assessment Index

New ConTex*		358
19.11.15		
Gearless	1100 TEU	12 mos
	1700 TEU	24 mos
	2500 TEU	n.a.
Gearless	2700 TEU	\$6.793
	3500 TEU	\$8.093
	4250 TEU	\$6.656
Gearless	2700 TEU	\$7.968
	3500 TEU	\$7.313
	4250 TEU	\$8.400
Gearless	3500 TEU	\$6.746
	4250 TEU	\$8.442
	4250 TEU	\$6.279
	4250 TEU	\$8.301

Legend		
↑	up	+ 2% or more
↗	steady up	from +1% to +1,9%
→	steady	+/- 1 %
↘	steady down	from -1% to -1,9%
↓	down	- 2% or less

*New ConTex evaluation is EXCLUDING
2500/2700/3500/4250 TEU groups for
12 months period

New ConTex-Commentary - issued:

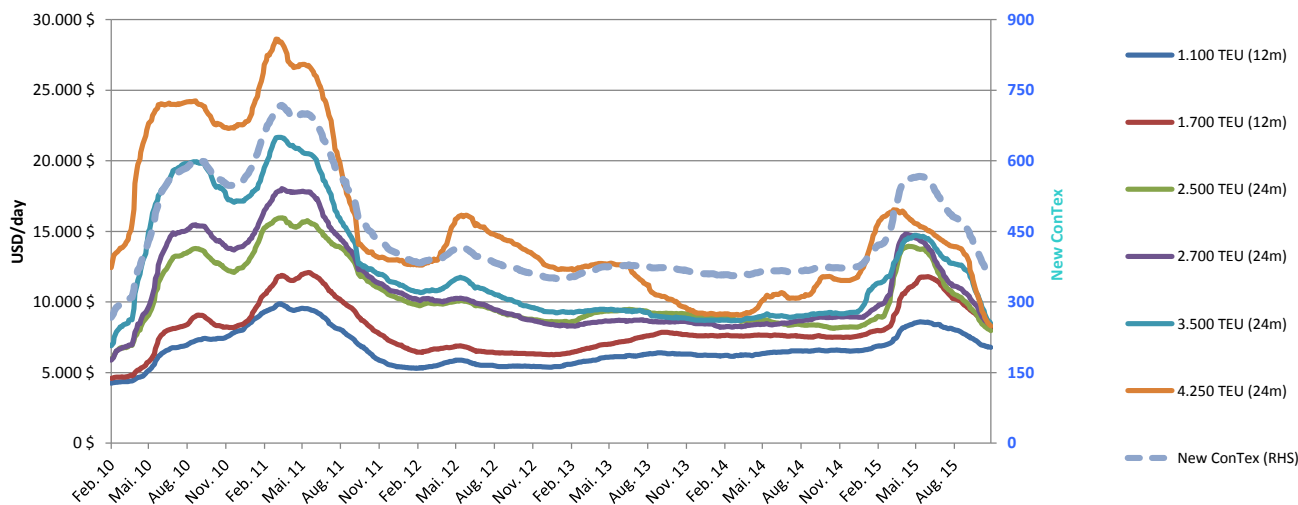
19.11.15

The New ConTex has dropped another 6 points within this week. Compared to the previous weeks this is the smallest decline but considering the already very low market it is alarming to see that the charter rates are still dropping. Very low bunker prices and freight rates are pushing all markets down and Owners as well as Operators are having a tough time trying to break even. In some size segments, especially in the larger ones, vessels are even fixed below the OPEX costs. This means very challenging times for all parties, especially when taking into consideration that most likely nothing much positive will happen until after Chinese New Year. On a Month-to-Month basis the 4250 and 3500 TEU-Types have experienced the biggest decline - the spot-list of vessels is growing in most segments. Many Operators are working on employing their own idle vessels instead of fixing or extending chartered vessels.

New ConTex Development

Vessel type		Evaluated Period	Today	Week-on-Week			Month-on-Month			Year-on-Year			
			19.11.15	12.11.15	Change	Change	20.10.15	Change	Change	18.11.14	Change	Change	
New ConTex*			358	364	-6	↘	-1,6%	407	-49	-12,0%	373	-15	-4,0%
New ConTex	1100 TEU	12 mos	\$6.793	\$6.809	-\$16	↘	-0,2%	\$7.139	-\$346	-4,8%	\$6.591	202	3,1%
	1700 TEU		\$8.093	\$8.223	-\$130	↘	-1,6%	\$8.972	-\$879	-9,8%	\$7.514	579	7,7%
	2500 TEU		\$7.968	\$8.089	-\$121	↘	-1,5%	\$8.941	-\$973	-10,9%	\$8.169	-201	-2,5%
	2700 TEU	24 mos	\$8.400	\$8.508	-\$108	↘	-1,3%	\$9.562	-\$1.162	-12,2%	\$8.943	-543	-6,1%
	3500 TEU		\$8.442	\$8.705	-\$263	↓	-3,0%	\$10.454	-\$2.012	-19,2%	\$9.208	-766	-8,3%
	4250 TEU		\$8.301	\$8.527	-\$226	↓	-2,7%	\$10.371	-\$2.070	-20,0%	\$11.596	-3.295	-28,4%
	2500 TEU	12 mos	\$6.656	\$6.827	-\$171	↓	-2,5%	\$7.872	-\$1.216	-15,4%	\$6.967	-311	-4,5%
	2700 TEU		\$7.313	\$7.412	-\$99	↘	-1,3%	\$8.500	-\$1.187	-14,0%	\$8.153	-840	-10,3%
	3500 TEU		\$6.746	\$7.116	-\$370	↓	-5,2%	\$9.410	-\$2.664	-28,3%	\$8.206	-1.460	-17,8%
	4250 TEU		\$6.279	\$6.429	-\$150	↓	-2,3%	\$8.689	-\$2.410	-27,7%	\$9.978	-3.699	-37,1%

New ConTex



Disclaimer

The brand NewConTex is copyrighted by Vereinigung Hamburger Schiffsmakler und Schiffsagenten e.V. ("VHSS e.V.") and is protected by law. The NewConTex may be published only with the source reference © VHSS e.V. It is distributed to the general public for information purposes only and cannot be relied upon as a trading recommendation and does not constitute a solicitation to trade. The reported information is obtained from market sources. While every effort has been made to ensure the accuracy and the completeness of the NewConTex, VHSS e.V. makes no representations, conditions or warranties of any kind, express or implied, about the completeness, accuracy, reliability, or suitability of the NewConTex. Any reliance you place on the NewConTex is therefore strictly at your own risk. Neither VHSS e.V. nor any of its subsidiaries or affiliates nor any employee of the foregoing shall be liable or have any responsibility for any loss, liability or damage, cost or expense including without limitation, indirect or consequential loss or damage, or any loss or damage whatsoever arising from loss of data or profits arising out of, or in connection with, the use of and the reliance on the NewConTex, save for death or personal injury arising from VHSS e.V. negligence and fraudulent misrepresentation that cannot, under German law, be excluded.