



New ConTex Container Ship Time Charter Assessment Index

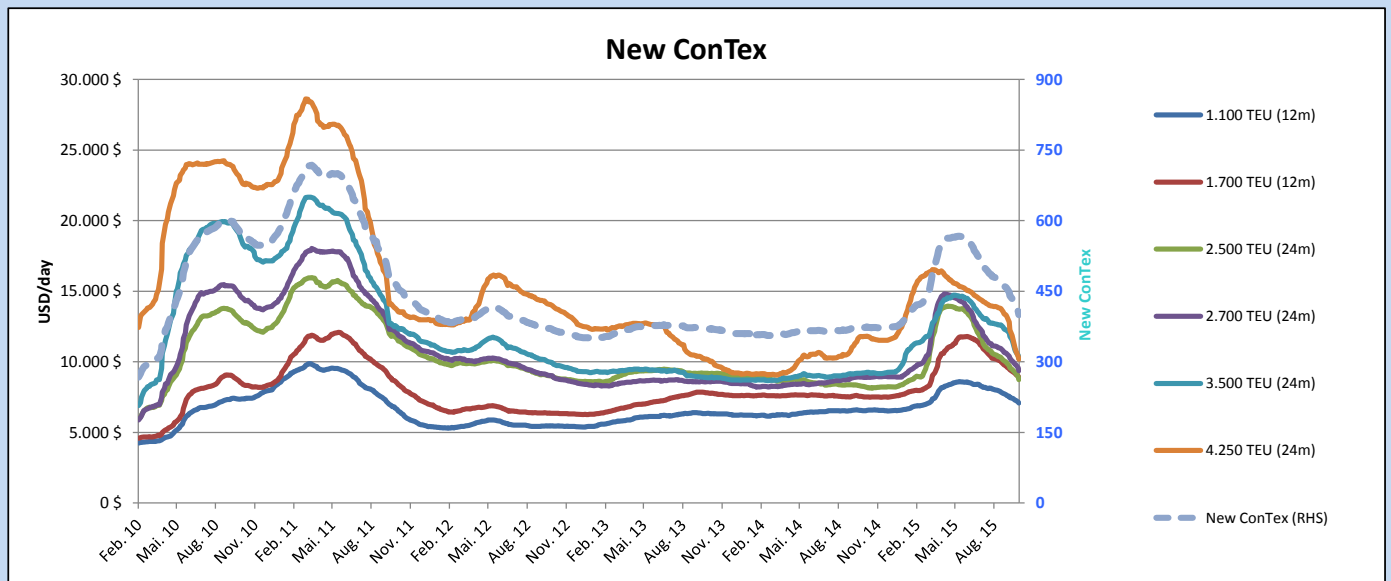
New ConTex*		400	
22.10.15		12 mos	24 mos
Gearless	1100 TEU	\$7.078	n.a.
	1700 TEU	\$8.847	
	2500 TEU	\$7.654	\$8.726
Gearless	2700 TEU	\$8.305	\$9.358
	3500 TEU	\$9.110	\$10.235
	4250 TEU	\$8.332	\$10.180

Legend		
↑	up	+ 2% or more
↔	steady up	from +1% to +1,9%
↔	steady	+/- 1 %
↔	steady down	from -1% to -1,9%
↓	down	- 2% or less

*New ConTex evaluation is EXCLUDING 2500/2700/3500/4250 TEU groups for 12 months period

New ConTex-Commentary - issued:	22.10.15
<p>The negative trend is unchanged as seen last weeks and consequently the NEW CONTEX reported a 16 points decrease closes at 400 points. Compared to 1st October it is negative shift of 40 points. Again the Panamax market has seen heaviest pressure with -8,9% on week-on-week basis or even more than 30% on month-by-month / 12 months valuation - basis. Also all other segments suffering as well with results between -2,6% (1100 TEU) upto -5,7% (3500 TEU). With further negative signals being reported it is unlikely that we will see a positive change soon.</p>	

New ConTex Development													
Vessel type	Evaluated Period	Today	Week-on-Week		Month-on-Month			Year-on-Year					
			22.10.15	15.10.15	Change	Change	22.09.15	Change	Change	21.10.14	Change	Change	
New ConTex*		400	416	-16	↓	-3,8%	458	-58	-12,7%	374	26	7,0%	
New ConTex	1100 TEU	12 mos	\$7.078	\$7.267	-\$189	↓	-2,6%	\$7.658	-\$580	-7,6%	\$6.534	544	8,3%
	1700 TEU		\$8.847	\$9.092	-\$245	↓	-2,7%	\$9.711	-\$864	-8,9%	\$7.532	1.315	17,5%
	2500 TEU	24 mos	\$8.726	\$9.169	-\$443	↓	-4,8%	\$9.971	-\$1.245	-12,5%	\$8.258	468	5,7%
	2700 TEU		\$9.358	\$9.781	-\$423	↓	-4,3%	\$10.608	-\$1.250	-11,8%	\$8.904	454	5,1%
	3500 TEU		\$10.235	\$10.687	-\$452	↓	-4,2%	\$12.256	-\$2.021	-16,5%	\$9.206	1.029	11,2%
4250 TEU		\$10.180	\$10.762	-\$582	↓	-5,4%	\$13.321	-\$3.141	-23,6%	\$11.769	-1.589	-13,5%	
New ConTex	2500 TEU	12 mos	\$7.654	\$8.097	-\$443	↓	-5,5%	\$8.786	-\$1.132	-12,9%	\$7.080	574	8,1%
	2700 TEU		\$8.305	\$8.699	-\$394	↓	-4,5%	\$9.413	-\$1.108	-11,8%	\$8.060	245	3,0%
	3500 TEU		\$9.110	\$9.661	-\$551	↓	-5,7%	\$11.192	-\$2.082	-18,6%	\$8.162	948	11,6%
	4250 TEU		\$8.332	\$9.143	-\$811	↓	-8,9%	\$12.116	-\$3.784	-31,2%	\$10.379	-2.047	-19,7%



Disclaimer

The brand NewConTex is copyrighted by Vereinigung Hamburger Schiffsmakler und Schiffsagenten e.V. ("VHSS e.V.") and is protected by law. The NewConTex may be published only with the source reference © VHSS e.V. It is distributed to the general public for information purposes only and cannot be relied upon as a trading recommendation and does not constitute a solicitation to trade. The reported information is obtained from market sources. While every effort has been made to ensure the accuracy and the completeness of the NewConTex, VHSS e.V. makes no representations, conditions or warranties of any kind, express or implied, about the completeness, accuracy, reliability, or suitability of the NewConTex. Any reliance you place on the NewConTex is therefore strictly at your own risk. Neither VHSS e.V. nor any of its subsidiaries or affiliates nor any employee of the foregoing shall be liable or have any responsibility for any loss, liability or damage, cost or expense including without limitation, indirect or consequential loss or damage, or any loss or damage whatsoever arising from loss of data or profits arising out of, or in connection with, the use of and the reliance on the NewConTex, save for death or personal injury arising from VHSS e.V. negligence and fraudulent misrepresentation that cannot, under German law, be excluded.