



New ConTex Container Ship Time Charter Assessment Index

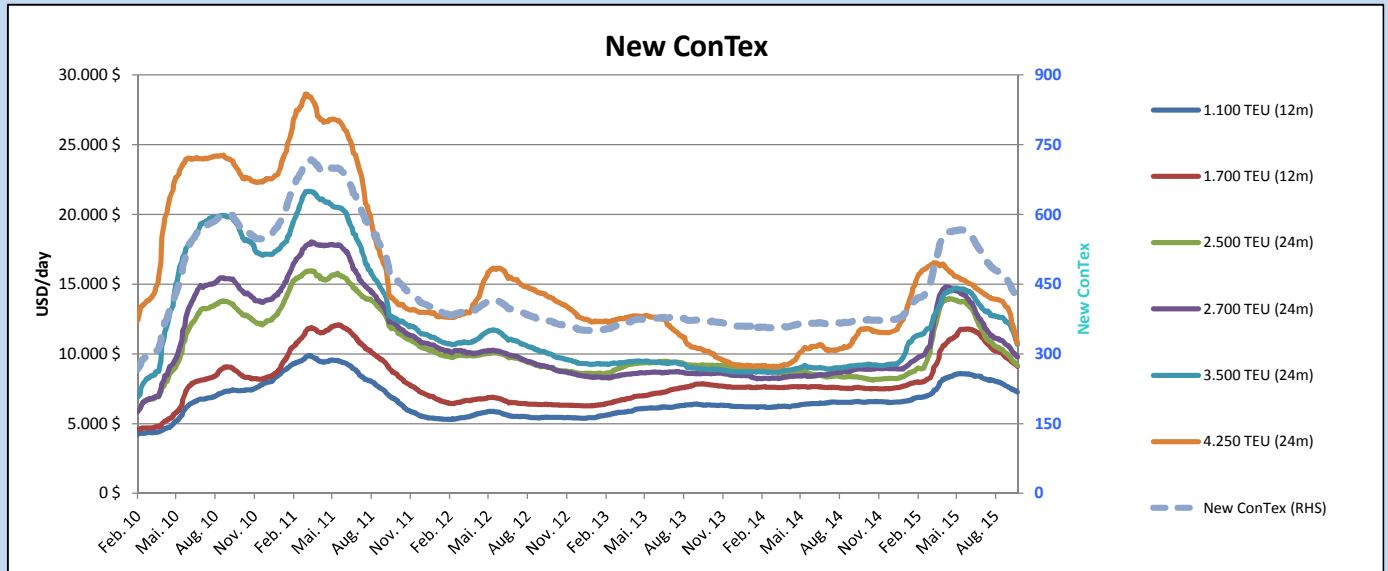
New ConTex*		416	
15.10.15		12 mos	24 mos
Geared	1100 TEU	\$7.267	n.a.
	1700 TEU	\$9.092	
	2500 TEU	\$8.097	
Gearless	2700 TEU	\$8.699	\$9.781
	3500 TEU	\$9.661	\$10.687
	4250 TEU	\$9.143	\$10.762

Legend		
↑	up	+ 2% or more
↗	steady up	from +1% to +1,9%
→	steady	+/- 1 %
↘	steady down	from -1% to -1,9%
↓	down	- 2% or less

*New ConTex evaluation is EXCLUDING 2500/2700/3500/4250 TEU groups for 12 months period

New ConTex-Commentary - issued:	15.10.15
<p>The New ConTex closes week 42 at 416 points, a drop of 13 points compared to the previous week. All segments have dropped on a w-o-w and m-o-m basis. The Panamax sector is the only one that eased off by double digits on a m-o-m basis with more vessels becoming idle, i.e. -26.1% on 12 months (4250TEU), -15.0% (3500TEU) respectively. The 1100 and 1700TEU segments lost least of all segments on a m-o-m basis; -6.3% (1100TEU) and -7.5% (1700TEU).</p>	

		New ConTex Development										
Vessel type	Evaluated Period	Today	Week-on-Week		Month-on-Month			Year-on-Year				
		15.10.15	08.10.15	Change	Change	15.09.15	Change	Change	14.10.14	Change	Change	
New ConTex*		416	429	-13	↓	-3,0%	464	-48	-10,3%	374	42	11,2%
New ConTex	1100 TEU	\$7.267	\$7.394	-\$127	↘	-1,7%	\$7.757	-\$490	-6,3%	\$6.556	711	10,8%
	1700 TEU	\$9.092	\$9.285	-\$193	↘	-2,1%	\$9.834	-\$742	-7,5%	\$7.555	1.537	20,3%
	2500 TEU	\$9.169	\$9.388	-\$219	↘	-2,3%	\$10.116	-\$947	-9,4%	\$8.305	864	10,4%
	2700 TEU	\$9.781	\$10.005	-\$224	↘	-2,2%	\$10.771	-\$990	-9,2%	\$8.915	866	9,7%
	3500 TEU	\$10.687	\$11.318	-\$631	↘	-5,6%	\$12.446	-\$1.759	-14,1%	\$9.191	1.496	16,3%
	4250 TEU	\$10.762	\$11.565	-\$803	↘	-6,9%	\$13.535	-\$2.773	-20,5%	\$11.776	-1.014	-8,6%
	2500 TEU	\$8.097	\$8.260	-\$163	↘	-2,0%	\$8.884	-\$787	-8,9%	\$7.123	974	13,7%
	2700 TEU	\$8.699	\$8.924	-\$225	↘	-2,5%	\$9.502	-\$803	-8,5%	\$8.066	633	7,8%
	3500 TEU	\$9.661	\$10.139	-\$478	↘	-4,7%	\$11.361	-\$1.700	-15,0%	\$8.141	1.520	18,7%
	4250 TEU	\$9.143	\$9.999	-\$856	↘	-8,6%	\$12.371	-\$3.228	-26,1%	\$10.416	-1.273	-12,2%



Disclaimer

The brand NewConTex is copyrighted by Vereinigung Hamburger Schiffsmakler und Schiffsagenten e.V. ("VHSS e.V.") and is protected by law. The NewConTex may be published only with the source reference © VHSS e.V. It is distributed to the general public for information purposes only and cannot be relied upon as a trading recommendation and does not constitute a solicitation to trade. The reported information is obtained from market sources. While every effort has been made to ensure the accuracy and the completeness of the NewConTex, VHSS e.V. makes no representations, conditions or warranties of any kind, express or implied, about the completeness, accuracy, reliability, or suitability of the NewConTex. Any reliance you place on the NewConTex is therefore strictly at your own risk. Neither VHSS e.V. nor any of its subsidiaries or affiliates nor any employee of the foregoing shall be liable or have any responsibility for any loss, liability or damage, cost or expense including without limitation, indirect or consequential loss or damage, or any loss or damage whatsoever arising from loss of data or profits arising out of, or in connection with, the use of and the reliance on the NewConTex, save for death or personal injury arising from VHSS e.V. negligence and fraudulent misrepresentation that cannot, under German law, be excluded.