



New ConTex Container Ship Time Charter Assessment Index

New ConTex*		429	
08.10.15		12 mos	24 mos
Gearless	1100 TEU	\$7.394	n.a.
	1700 TEU	\$9.285	
	2500 TEU	\$8.260	
Gearless	2700 TEU	\$8.924	\$9.388
	3500 TEU	\$10.139	\$11.318
	4250 TEU	\$9.999	\$11.565

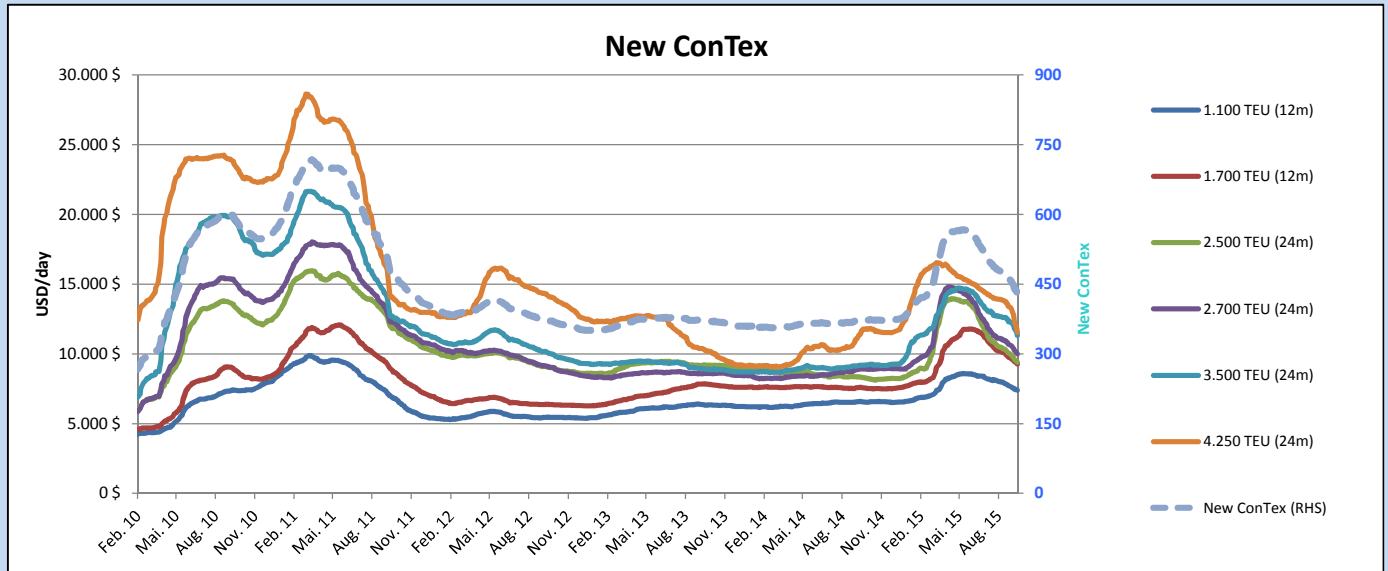
Legend		
↑	up	+ 2% or more
↗	steady up	from +1% to +1,9%
→	steady	+/- 1%
↘	steady down	from -1% to -1,9%
↓	down	- 2% or less

*New ConTex evaluation is EXCLUDING 2500/2700/3500/4250 TEU groups for 12 months period

New ConTex-Commentary - issued: 08.10.15

Also the beginning of the 4th quarter of the year did not change anything in the direction of the New ConTex development and so the index lost on w-o-w basis another 11 points (-2,5%) to a level of now 429 points. Themed by "the bigger, the worse", one can see that the smaller units in the classes between 1100 and 2700 TEU lost moderately only (with -0,9 to -2,5% compared to last week); the evaluated classes of 3500 TEU as well as the Baby-Panamaxes with 4250 TEU, however, had to accept further reductions between -4,1% (24 mos evaluation for the 3500 TEU ships) and upto - 6,5% (12 mos evaluation for the 4250 TEU class). In this current rollercoaster setting with fairly volatile rate developments it is not much of a surprise – owed to the strong supply/demand imbalance in certain segments – that the situation appears to charter bigger ships for smaller money.

Vessel type		Evaluated Period	New ConTex Development									
			Today 08.10.15	Week-on-Week		Month-on-Month			Year-on-Year			
			01.10.15	Change	Change	08.09.15	Change	Change	07.10.14	Change	Change	
New ConTex*			429	440	-11	↓ -2,5%	473	-44	-9,3%	374	55	14,7%
New ConTex	1100 TEU	12 mos	\$7.394	\$7.460	-\$66	↘ -0,9%	\$7.889	-\$495	-6,3%	\$6.600	794	12,0%
	1700 TEU		\$9.285	\$9.435	-\$150	↘ -1,6%	\$10.088	-\$803	-8,0%	\$7.615	1.670	21,9%
	2500 TEU		\$9.388	\$9.572	-\$184	↘ -1,9%	\$10.341	-\$953	-9,2%	\$8.346	1.042	12,5%
	2700 TEU	24 mos	\$10.005	\$10.247	-\$242	↘ -2,4%	\$10.959	-\$954	-8,7%	\$8.905	1.100	12,4%
	3500 TEU		\$11.318	\$11.797	-\$479	↘ -4,1%	\$12.609	-\$1.291	-10,2%	\$9.198	2.120	23,0%
	4250 TEU		\$11.565	\$12.240	-\$675	↘ -5,5%	\$13.781	-\$2.216	-16,1%	\$11.434	131	1,1%
2500 TEU	12 mos	\$8.260	\$8.473	-\$213	↘ -2,5%	\$9.138	-\$878	-9,6%	\$7.173	1.087	15,2%	
2700 TEU		\$8.924	\$9.070	-\$146	↘ -1,6%	\$9.694	-\$770	-7,9%	\$8.088	836	10,3%	
3500 TEU		\$10.139	\$10.664	-\$525	↘ -4,9%	\$11.516	-\$1.377	-12,0%	\$8.079	2.060	25,5%	
4250 TEU		\$9.999	\$10.695	-\$696	↘ -6,5%	\$12.563	-\$2.564	-20,4%	\$10.168	-169	-1,7%	



Disclaimer

The brand NewConTex is copyrighted by Vereinigung Hamburger Schiffsmakler und Schiffsagenten e.V. ("VHSS e.V.") and is protected by law. The NewConTex may be published only with the source reference © VHSS e.V. It is distributed to the general public for information purposes only and cannot be relied upon as a trading recommendation and does not constitute a solicitation to trade. The reported information is obtained from market sources. While every effort has been made to ensure the accuracy and the completeness of the NewConTex, VHSS e.V. makes no representations, conditions or warranties of any kind, express or implied, about the completeness, accuracy, reliability, or suitability of the NewConTex. Any reliance you place on the NewConTex is therefore strictly at your own risk. Neither VHSS e.V. nor any of its subsidiaries or affiliates nor any employee of the foregoing shall be liable or have any responsibility for any loss, liability or damage, cost or expense including without limitation, indirect or consequential loss or damage, or any loss or damage whatsoever arising from loss of data or profits arising out of, or in connection with, the use of and the reliance on the NewConTex, save for death or personal injury arising from VHSS e.V. negligence and fraudulent misrepresentation that cannot, under German law, be excluded.