



New ConTex Container Ship Time Charter Assessment Index

New ConTex*		455	
24.09.15		12 mos	24 mos
Geared	1100 TEU	\$7.609	n.a.
	1700 TEU	\$9.615	
	2500 TEU	\$8.693	
Gearless	2700 TEU	\$9.347	\$10.557
	3500 TEU	\$11.121	\$12.223
	4250 TEU	\$11.893	\$13.183

Legend		
↑	up	+ 2% or more
↗	steady up	from +1% to +1,9%
→	steady	+/- 1 %
↘	steady down	from -1% to -1,9%
↓	down	- 2% or less

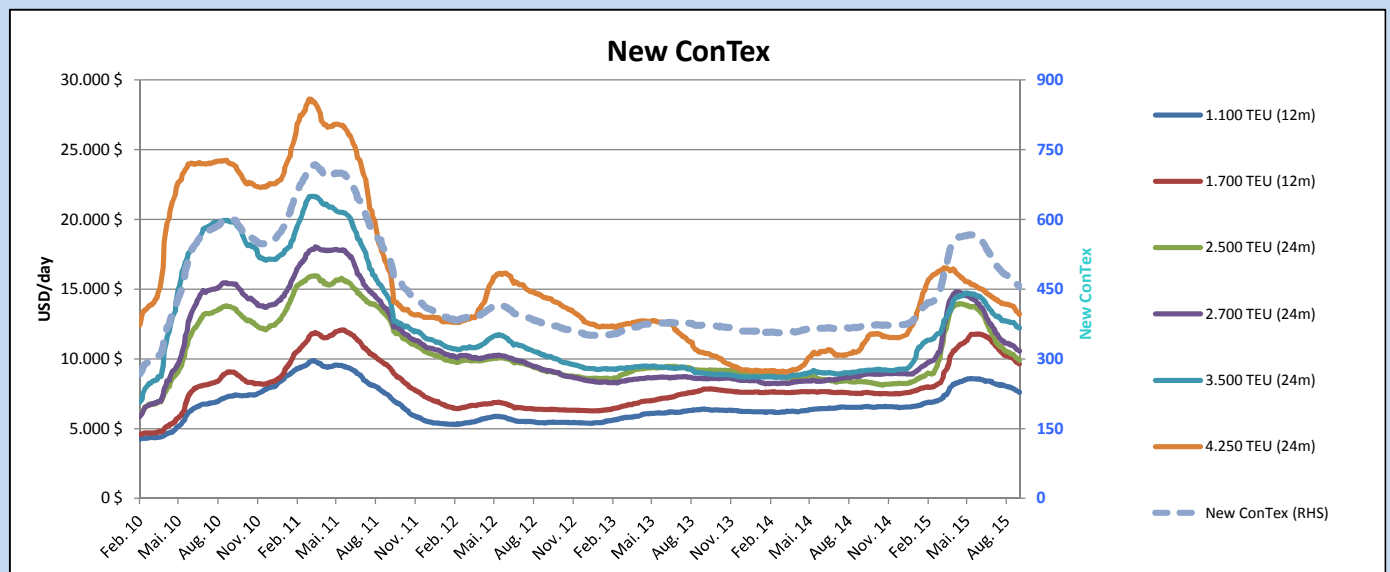
*New ConTex evaluation is EXCLUDING
2500/2700/3500/4250 TEU groups for
12 months period

New ConTex-Commentary - issued:

24.09.15

The New ConTex closes week 39 at 455 points and continues the downward trend on a w-o-w and m-o-m basis, however it stands +23.0% on a y-o-y basis. The panamax segment remains under heavy pressure losing USD 825 in a m-o-m basis but remains 25.9% above last year (12 months). The smaller sizes - 1100 TEU & 1700 TEU - show little change on a w-o-w basis with a drop of 1.5% for the 1100 TEU and 1.6% on the 1700 TEU.

		New ConTex Development										
Vessel type	Evaluated Period	Today	Week-on-Week			Month-on-Month			Year-on-Year			
		24.09.15	17.09.15	Change	Change	25.08.15	Change	Change	23.09.14	Change	Change	
New ConTex*		455	461	-6	📉 -1,3%	480	-25	-5,2%	370	85	23,0%	
New ConTex	1100 TEU	12 mos	\$7.609	\$7.726	-\$117	📉 -1,5%	\$8.026	-\$417	-5,2%	\$6.531	1.078	16,5%
	1700 TEU		\$9.615	\$9.771	-\$156	📉 -1,6%	\$10.227	-\$612	-6,0%	\$7.520	2.095	27,9%
	2500 TEU	24 mos	\$9.888	\$10.069	-\$181	📉 -1,8%	\$10.533	-\$645	-6,1%	\$8.368	1.520	18,2%
	2700 TEU		\$10.557	\$10.672	-\$115	📉 -1,1%	\$11.110	-\$553	-5,0%	\$8.825	1.732	19,6%
	3500 TEU		\$12.223	\$12.318	-\$95	📉 -0,8%	\$12.708	-\$485	-3,8%	\$9.155	3.068	33,5%
	4250 TEU		\$13.183	\$13.389	-\$206	📉 -1,5%	\$13.908	-\$725	-5,2%	\$10.795	2.388	22,1%
	2500 TEU	12 mos	\$8.693	\$8.823	-\$130	📉 -1,5%	\$9.348	-\$655	-7,0%	\$7.225	1.468	20,3%
	2700 TEU		\$9.347	\$9.461	-\$114	📉 -1,2%	\$9.904	-\$557	-5,6%	\$7.967	1.380	17,3%
	3500 TEU		\$11.121	\$11.252	-\$131	📉 -1,2%	\$11.706	-\$585	-5,0%	\$8.001	3.120	39,0%
	4250 TEU		\$11.893	\$12.224	-\$331	📉 -2,7%	\$12.718	-\$825	-6,5%	\$9.448	2.445	25,9%



Disclaimer

The brand NewConTex is copyrighted by Vereinigung Hamburger Schiffsmakler und Schiffsagenten e.V. ("VHSS e.V.") and is protected by law. The NewConTex may be published only with the source reference © VHSS e.V. It is distributed to the general public for information purposes only and cannot be relied upon as a trading recommendation and does not constitute a solicitation to trade. The reported information is obtained from market sources. While every effort has been made to ensure the accuracy and the completeness of the NewConTex, VHSS e.V. makes no representations, conditions or warranties of any kind, express or implied, about the completeness, accuracy, reliability, or suitability of the NewConTex. Any reliance you place on the NewConTex is therefore strictly at your own risk. Neither VHSS e.V. nor any of its subsidiaries or affiliates nor any employee of the foregoing shall be liable or have any responsibility for any loss, liability or damage, cost or expense including without limitation, indirect or consequential loss or damage, or any loss or damage whatsoever arising from loss of data or profits arising out of, or in connection with, the use of and the reliance on the NewConTex, save for death or personal injury arising from VHSS e.V. negligence and fraudulent misrepresentation that cannot, under German law, be excluded.