



New ConTex Container Ship Time Charter Assessment Index

New ConTex*		461	
17.09.15		12 mos	24 mos
Gearless	1100 TEU	\$7.726	n.a.
	1700 TEU	\$9.771	
	2500 TEU	\$8.823	
Gearless	2700 TEU	\$9.461	\$10.069
	3500 TEU	\$11.252	\$12.318
	4250 TEU	\$12.224	\$13.389

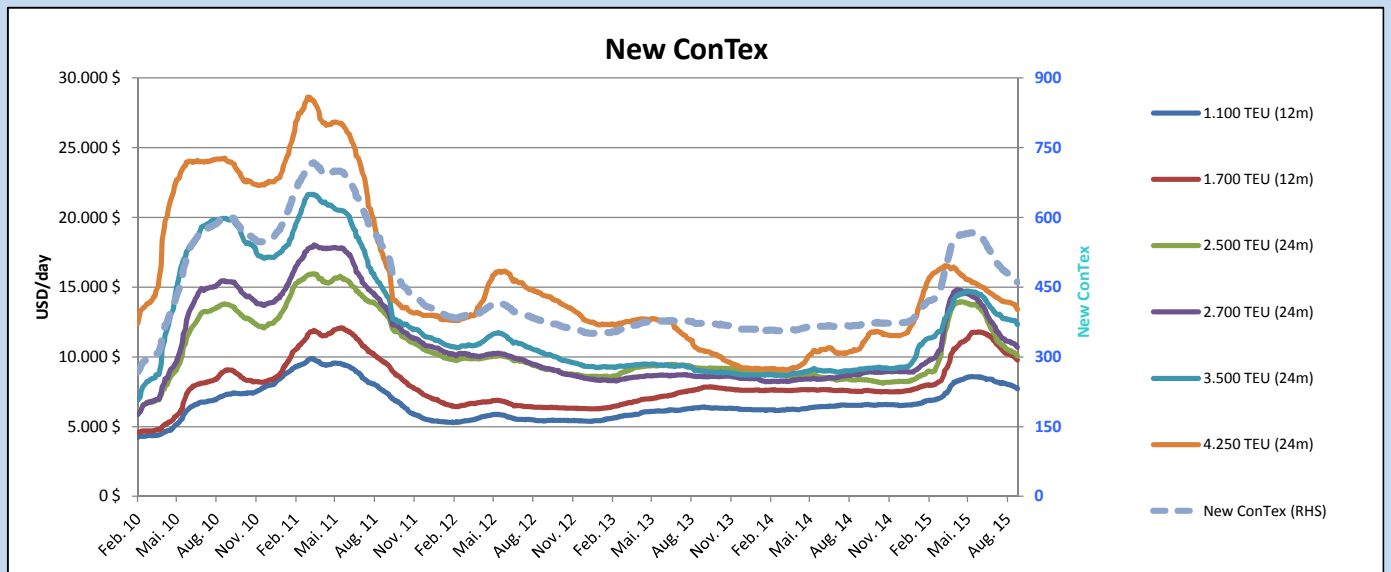
Legend		
↑	up	+ 2% or more
↗	steady up	from +1% to +1,9%
→	steady	+/- 1%
↘	steady down	from -1% to -1,9%
↓	down	- 2% or less

*New ConTex evaluation is EXCLUDING 2500/2700/3500/4250 TEU groups for 12 months period

New ConTex-Commentary - issued: 17.09.15

The container market maintains its softer trend in the absence of the usual autumn fixing spree. There is simply a lack of demand which puts Owners in a weaker position. With the exception of a few longer fixtures for high-reefer vessels, the periods are usually very flexible and often of short durations. The Post-Panamax market has fallen completely silent, while only two Panamax fixtures became public during the last week. The 2500-2800 TEU segments were fairly active, but TC rates have dropped to high \$ 8's for the smaller geared vessels while the larger gearless vessels fix low to mid \$ 9's. For the 1100 TEU segment there were only two fixtures reported that show a wide spread, because one fixture was for about 6 months at \$ 9,200 while the second fixture showed only \$ 7,200 for a shorter period. Both of these fixtures were agreed for vessels open in Asia.

Vessel type		Evaluated Period	Today	Week-on-Week		Month-on-Month			Year-on-Year			
			17.09.15	10.09.15	Change	Change	18.08.15	Change	Change	16.09.14	Change	Change
New ConTex*			461	472	-11	↓ -2,3%	485	-24	-4,9%	368	93	25,3%
New ConTex	1100 TEU	12 mos	\$7.726	\$7.860	-\$134	↘ -1,7%	\$8.120	-\$394	-4,9%	\$6.520	1.206	18,5%
	1700 TEU		\$9.771	\$9.996	-\$225	↘ -2,3%	\$10.344	-\$573	-5,5%	\$7.529	2.242	29,8%
	2500 TEU	24 mos	\$10.069	\$10.302	-\$233	↘ -2,3%	\$10.720	-\$651	-6,1%	\$8.380	1.689	20,2%
	2700 TEU		\$10.672	\$10.943	-\$271	↘ -2,5%	\$11.277	-\$605	-5,4%	\$8.780	1.892	21,5%
	3500 TEU		\$12.318	\$12.613	-\$295	↘ -2,3%	\$12.718	-\$400	-3,1%	\$9.110	3.208	35,2%
	4250 TEU		\$13.389	\$13.759	-\$370	↘ -2,7%	\$13.959	-\$570	-4,1%	\$10.555	2.834	26,8%
2500 TEU	12 mos	\$8.823	\$9.078	-\$255	↘ -2,8%	\$9.573	-\$750	-7,8%	\$7.254	1.569	21,6%	
2700 TEU		\$9.461	\$9.643	-\$182	↘ -1,9%	\$10.075	-\$614	-6,1%	\$7.930	1.531	19,3%	
3500 TEU		\$11.252	\$11.470	-\$218	↘ -1,9%	\$11.774	-\$522	-4,4%	\$7.955	3.297	41,4%	
4250 TEU		\$12.224	\$12.514	-\$290	↘ -2,3%	\$12.896	-\$672	-5,2%	\$9.129	3.095	33,9%	



Disclaimer

The brand NewConTex is copyrighted by Vereinigung Hamburger Schiffsmakler und Schiffsagenten e.V. ("VHSS e.V.") and is protected by law. The NewConTex may be published only with the source reference © VHSS e.V. It is distributed to the general public for information purposes only and cannot be relied upon as a trading recommendation and does not constitute a solicitation to trade. The reported information is obtained from market sources. While every effort has been made to ensure the accuracy and the completeness of the NewConTex, VHSS e.V. makes no representations, conditions or warranties of any kind, express or implied, about the completeness, accuracy, reliability, or suitability of the NewConTex. Any reliance you place on the NewConTex is therefore strictly at your own risk. Neither VHSS e.V. nor any of its subsidiaries or affiliates nor any employee of the foregoing shall be liable or have any responsibility for any loss, liability or damage, cost or expense including without limitation, indirect or consequential loss or damage, or any loss or damage whatsoever arising from loss of data or profits arising out of, or in connection with, the use of and the reliance on the NewConTex, save for death or personal injury arising from VHSS e.V. negligence and fraudulent misrepresentation that cannot, under German law, be excluded.