



New ConTex Container Ship Time Charter Assessment Index

New ConTex*		472	
10.09.15		12 mos	24 mos
Geared	1100 TEU	\$7.860	n.a.
	1700 TEU	\$9.996	
	2500 TEU	\$9.078	
Gearless	2700 TEU	\$9.643	\$10.302
	3500 TEU	\$11.470	\$12.613
	4250 TEU	\$12.514	\$13.759

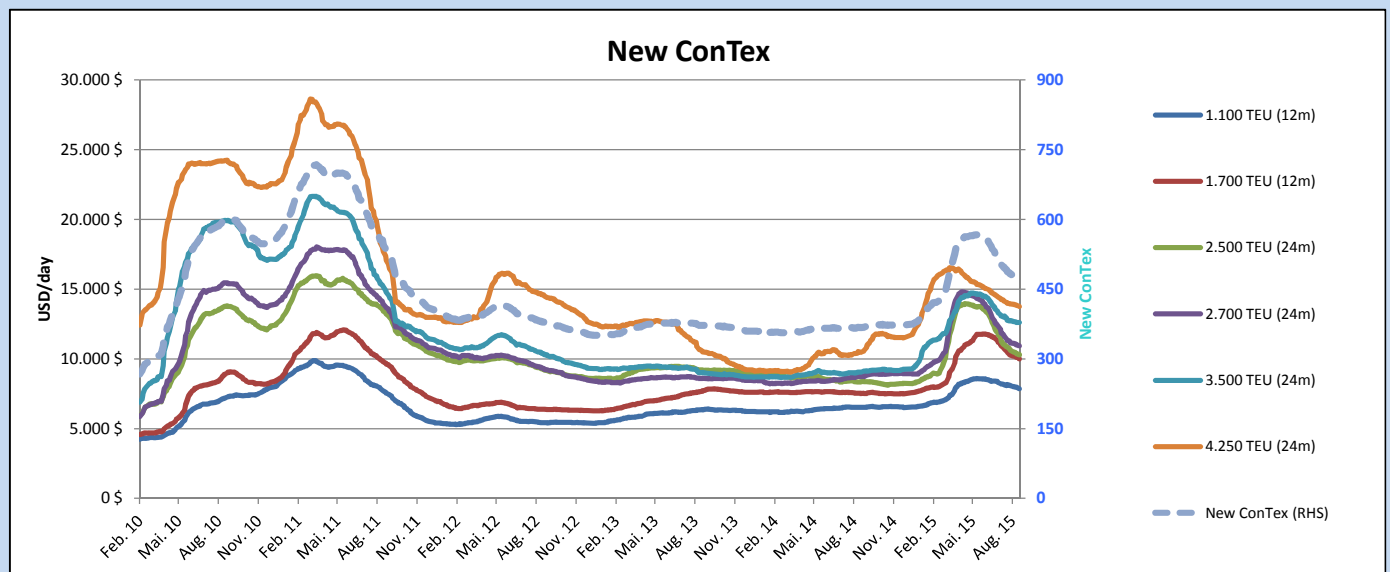
Legend		
↑	up	+ 2% or more
↗	steady up	from +1% to +1,9%
→	steady	+/- 1 %
↘	steady down	from -1% to -1,9%
↓	down	- 2% or less

*New ConTex evaluation is EXCLUDING
2500/2700/3500/4250 TEU groups for
12 months period

10.09.15

Although the pace of the market decline appears to be slowing at least for the moment, the fact that it is declining at all given the time of year is of course a disappointment for Owners. September and October are usually months when rates are expected to be on the rise. The New ConTex index shed another 3 points and now stands at 472. Yet again all sizes were marked down with the 2700 TEU gearless class declining the most, at 1.9% over the week whilst the 3500 TEUs gearless class was managing to hold on almost unchanged. Given the disappointing developments in cargo volumes and the significant amount of capacity continuing to join the fleet, conditions look set to be rather challenging in the months ahead.

		New ConTex Development										
Vessel type	Evaluated Period	Today	Week-on-Week			Month-on-Month			Year-on-Year			
		10.09.15	03.09.15	Change	Change	11.08.15	Change	Change	09.09.14	Change	Change	
New ConTex*		472	475	-3	➡ -0,6%	491	-19	-3,9%	367	105	28,6%	
New ConTex	1100 TEU	12 mos	\$7.860	\$7.966	-\$106	➡ -1,3%	\$8.095	-\$235	-2,9%	\$6.530	1.330	20,4%
	1700 TEU		\$9.996	\$10.111	-\$115	➡ -1,1%	\$10.577	-\$581	-5,5%	\$7.526	2.470	32,8%
	2500 TEU	24 mos	\$10.302	\$10.371	-\$69	➡ -0,7%	\$10.874	-\$572	-5,3%	\$8.350	1.952	23,4%
	2700 TEU		\$10.943	\$11.011	-\$68	➡ -0,6%	\$11.415	-\$472	-4,1%	\$8.721	2.222	25,5%
	3500 TEU		\$12.613	\$12.619	-\$6	➡ 0,0%	\$12.912	-\$299	-2,3%	\$9.044	3.569	39,5%
	4250 TEU		\$13.759	\$13.842	-\$83	➡ -0,6%	\$14.066	-\$307	-2,2%	\$10.477	3.282	31,3%
	2500 TEU	12 mos	\$9.078	\$9.201	-\$123	➡ -1,3%	\$9.709	-\$631	-6,5%	\$7.233	1.845	25,5%
	2700 TEU		\$9.643	\$9.833	-\$190	➡ -1,9%	\$10.233	-\$590	-5,8%	\$7.883	1.760	22,3%
	3500 TEU		\$11.470	\$11.557	-\$87	➡ -0,8%	\$11.895	-\$425	-3,6%	\$7.935	3.535	44,5%
	4250 TEU		\$12.514	\$12.665	-\$151	➡ -1,2%	\$12.973	-\$459	-3,5%	\$8.976	3.538	39,4%



Disclaimer

The brand NewConTex is copyrighted by Vereinigung Hamburger Schiffsmakler und Schiffsagenten e.V. ("VHSS e.V.") and is protected by law. The NewConTex may be published only with the source reference © VHSS e.V. It is distributed to the general public for information purposes only and cannot be relied upon as a trading recommendation and does not constitute a solicitation to trade. The reported information is obtained from market sources. While every effort has been made to ensure the accuracy and the completeness of the NewConTex, VHSS e.V. makes no representations, conditions or warranties of any kind, express or implied, about the completeness, accuracy, reliability, or suitability of the NewConTex. Any reliance you place on the NewConTex is therefore strictly at your own risk. Neither VHSS e.V. nor any of its subsidiaries or affiliates nor any employee of the foregoing shall be liable or have any responsibility for any loss, liability or damage, cost or expense including without limitation, indirect or consequential loss or damage, or any loss or damage whatsoever arising from loss of data or profits arising out of, or in connection with, the use of and the reliance on the NewConTex, save for death or personal injury arising from VHSS e.V. negligence and fraudulent misrepresentation that cannot, under German law, be excluded.