



New ConTex Container Ship Time Charter Assessment Index

New ConTex*		479	
27.08.15		12 mos	24 mos
G geared	1100 TEU	\$8.012	n.a.
	1700 TEU	\$10.206	
	2500 TEU	\$9.306	\$10.495
Gearless	2700 TEU	\$9.877	\$11.114
	3500 TEU	\$11.664	\$12.672
	4250 TEU	\$12.713	\$13.916

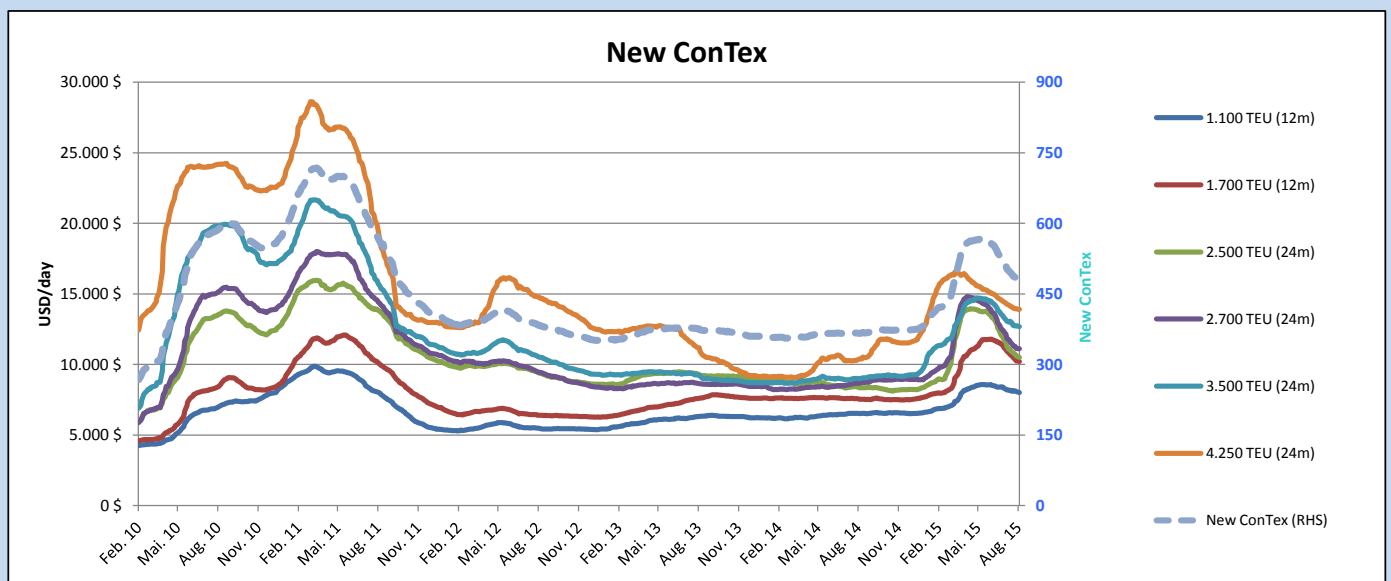
Legend		
↑	up	+ 2% or more
↔	steady up	from +1% to +1,9%
↔	steady	+/- 1%
↔	steady down	from -1% to -1,9%
↓	down	- 2% or less

*New ConTex evaluation is EXCLUDING 2500/2700/3500/4250 TEU groups for 12 months period

New ConTex-Commentary - issued:	27.08.15
<p>The bunker fuel prices drop to it's lowest level since 2005 and the <i>New ConTex</i> continues to decline further this week and closes at 479 points which is a slight decrease of 3 points compared to last week's level. All container segment are showing a negative development this week. One of the major decrease has been noticed again in the geared 2500 TEU segment. Based on 12 months period, this segment dropped by USD 125, equivalent to a negative 1,3 percent this week and closes at USD 9.306. Considering the 24 months period, the geared 2500 TEU segment reported a negative trend as well with a decrease of further USD 120 based on a week on week basis. Further decreasing trends has been reported for the gearless 2700 TEU segment with a loss of USD 29 basis 24 months and a loss of USD 83 basis 12 months period. The largest 4250 TEU segment reported the biggest negative development. This segment dropped by USD 149 basis 12 months period, respectively -1,2 percent.</p>	

New ConTex Development

Vessel type	Evaluated Period	Today 27.08.15	Week-on-Week		Month-on-Month			Year-on-Year					
			20.08.15	Change	Change	28.07.15	Change	Change	26.08.14	Change	Change		
New ConTex*		479	482	-3	↔	-0,6%	510	-31	↔	-6,1%	366	113	30,9%
New ConTex	1100 TEU	\$8.012	\$8.084	-\$72	↔	-0,9%	\$8.236	-\$224	↔	-2,7%	\$6.526	1.486	22,8%
	1700 TEU	\$10.206	\$10.263	-\$57	↔	-0,6%	\$11.062	-\$856	↔	-7,7%	\$7.559	2.647	35,0%
	2500 TEU	\$10.495	\$10.615	-\$120	↔	-1,1%	\$11.570	-\$1.075	↔	-9,3%	\$8.374	2.121	25,3%
	2700 TEU	\$11.114	\$11.143	-\$29	↔	-0,3%	\$12.130	-\$1.016	↔	-8,4%	\$8.662	2.452	28,3%
	3500 TEU	\$12.672	\$12.742	-\$70	↔	-0,5%	\$13.152	-\$480	↔	-3,6%	\$8.998	3.674	40,8%
4250 TEU	\$13.916	\$13.953	-\$37	↔	-0,3%	\$14.329	-\$413	↔	-2,9%	\$10.379	3.537	34,1%	
2500 TEU	12 mos	\$9.306	\$9.431	-\$125	↔	-1,3%	\$10.241	-\$935	↔	-9,1%	\$7.228	2.078	28,7%
2700 TEU		\$9.877	\$9.960	-\$83	↔	-0,8%	\$10.990	-\$1.113	↔	-10,1%	\$7.722	2.155	27,9%
3500 TEU		\$11.664	\$11.716	-\$52	↔	-0,4%	\$12.077	-\$413	↔	-3,4%	\$7.720	3.944	51,1%
4250 TEU		\$12.713	\$12.862	-\$149	↔	-1,2%	\$13.201	-\$488	↔	-3,7%	\$8.702	4.011	46,1%



Disclaimer

The brand NewConTex is copyrighted by Vereinigung Hamburger Schiffsmakler und Schiffsagenten e.V. ("VHSS e.V.") and is protected by law. The NewConTex may be published only with the source reference © VHSS e.V. It is distributed to the general public for information purposes only and cannot be relied upon as a trading recommendation and does not constitute a solicitation to trade. The reported information is obtained from market sources. While every effort has been made to ensure the accuracy and the completeness of the NewConTex, VHSS e.V. makes no representations, conditions or warranties of any kind, express or implied, about the completeness, accuracy, reliability, or suitability of the NewConTex. Any reliance you place on the NewConTex is therefore strictly at your own risk. Neither VHSS e.V. nor any of its subsidiaries or affiliates nor any employee of the foregoing shall be liable or have any responsibility for any loss, liability or damage, cost or expense including without limitation, indirect or consequential loss or damage, or any loss or damage whatsoever arising from loss of data or profits arising out of, or in connection with, the use of and the reliance on the NewConTex, save for death or personal injury arising from VHSS e.V. negligence and fraudulent misrepresentation that cannot, under German law, be excluded.