



New ConTex Container Ship Time Charter Assessment Index

New ConTex*		482	
20.08.15		12 mos	24 mos
Geared	1100 TEU	\$8.084	n.a.
	1700 TEU	\$10.263	
	2500 TEU	\$9.431	
Gearless	2700 TEU	\$9.960	\$11.143
	3500 TEU	\$11.716	\$12.742
	4250 TEU	\$12.862	\$13.953

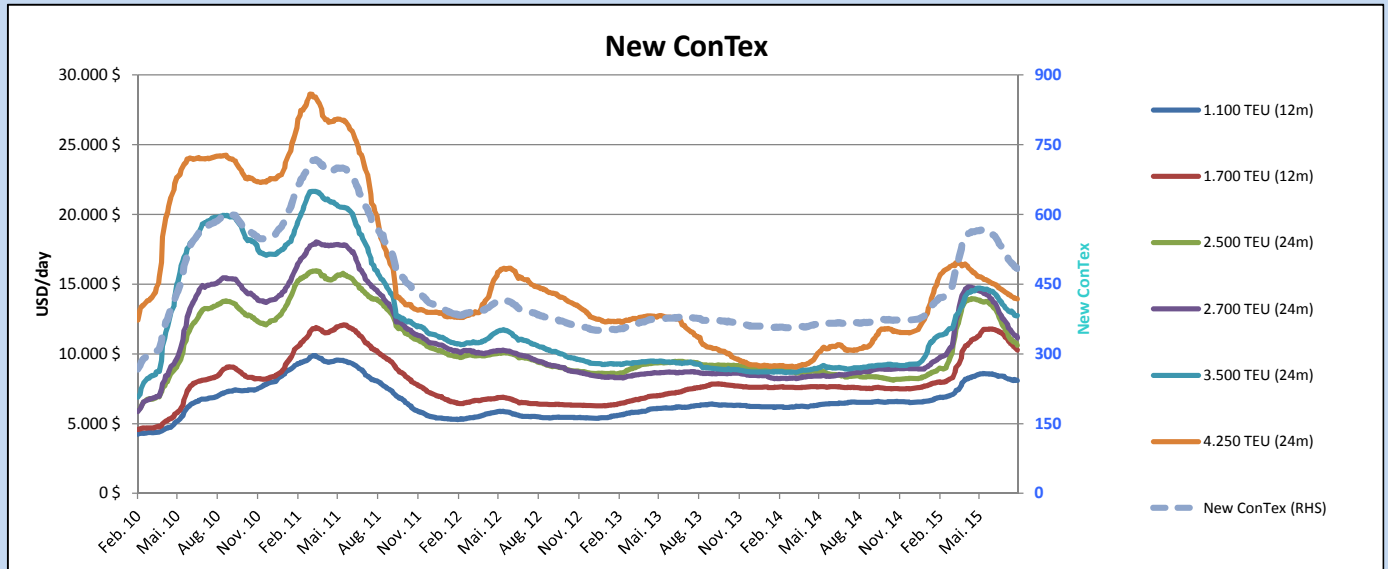
Legend		
↑	up	+ 2% or more
↗	steady up	from +1% to +1,9%
→	steady	+/- 1 %
↘	steady down	from -1% to -1,9%
↓	down	- 2% or less

*New ConTex evaluation is EXCLUDING 2500/2700/3500/4250 TEU groups for 12 months period

New ConTex-Commentary - issued: 20.08.15

The New ConTex closes week 34 at 482 points, another drop of 6 points compared to the previous week but remains positively 31,3% above last year. The New ConTex has fallen for 10 weeks straight. All segments stay in double digits percentage on a y-o-y basis. The 3500 TEU size has seen the smallest drop by -0.2 % on a w-o-w basis, whereat the 2500 TEU class dropped by -2.5% on a w-o-w basis.

Vessel type		Evaluated Period	New ConTex Development									
			Today 20.08.15	Week-on-Week		Month-on-Month		Year-on-Year				
			13.08.15	Change	Change	21.07.15	Change	Change	19.08.14	Change	Change	
New ConTex*			482	488	-6	↘ -1,2%	521	-39	-7,5%	367	115	31,3%
New ConTex	1100 TEU	12 mos	\$8.084	\$8.149	-\$65	↘ -0,8%	\$8.385	-\$301	-3,6%	\$6.535	1.549	23,7%
	1700 TEU		\$10.263	\$10.495	-\$232	↘ -2,2%	\$11.335	-\$1.072	-9,5%	\$7.580	2.683	35,4%
	2500 TEU	24 mos	\$10.615	\$10.851	-\$236	↘ -2,2%	\$11.909	-\$1.294	-10,9%	\$8.437	2.178	25,8%
	2700 TEU		\$11.143	\$11.326	-\$183	↘ -1,6%	\$12.418	-\$1.275	-10,3%	\$8.667	2.476	28,6%
	3500 TEU		\$12.742	\$12.771	-\$29	↘ -0,2%	\$13.435	-\$693	-5,2%	\$9.001	3.741	41,6%
4250 TEU	\$13.953	\$13.997	-\$44	↘ -0,3%	\$14.479	-\$526	-3,6%	\$10.275	3.678	35,8%		
2500 TEU	12 mos	\$9.431	\$9.671	-\$240	↘ -2,5%	\$10.607	-\$1.176	-11,1%	\$7.307	2.124	29,1%	
2700 TEU		\$9.960	\$10.164	-\$204	↘ -2,0%	\$11.258	-\$1.298	-11,5%	\$7.727	2.233	28,9%	
3500 TEU		\$11.716	\$11.790	-\$74	↘ -0,6%	\$12.378	-\$662	-5,3%	\$7.733	3.983	51,5%	
4250 TEU		\$12.862	\$12.947	-\$85	↘ -0,7%	\$13.377	-\$515	-3,8%	\$8.632	4.230	49,0%	



Disclaimer

The brand NewConTex is copyrighted by Vereinigung Hamburger Schiffsmakler und Schiffsagenten e.V. ("VHSS e.V.") and is protected by law. The NewConTex may be published only with the source reference © VHSS e.V. It is distributed to the general public for information purposes only and cannot be relied upon as a trading recommendation and does not constitute a solicitation to trade. The reported information is obtained from market sources. While every effort has been made to ensure the accuracy and the completeness of the NewConTex, VHSS e.V. makes no representations, conditions or warranties of any kind, express or implied, about the completeness, accuracy, reliability, or suitability of the NewConTex. Any reliance you place on the NewConTex is therefore strictly at your own risk. Neither VHSS e.V. nor any of its subsidiaries or affiliates nor any employee of the foregoing shall be liable or have any responsibility for any loss, liability or damage, cost or expense including without limitation, indirect or consequential loss or damage, or any loss or damage whatsoever arising from loss of data or profits arising out of, or in connection with, the use of and the reliance on the NewConTex, save for death or personal injury arising from VHSS e.V. negligence and fraudulent misrepresentation that cannot, under German law, be excluded.