



## New ConTex Container Ship Time Charter Assessment Index

| New ConTex* |          | 488      |          |
|-------------|----------|----------|----------|
| 13.08.15    |          | 12 mos   | 24 mos   |
| Geared      | 1100 TEU | \$8.149  | n.a.     |
|             | 1700 TEU | \$10.495 |          |
|             | 2500 TEU | \$9.671  |          |
| Gearless    | 2700 TEU | \$10.164 | \$11.326 |
|             | 3500 TEU | \$11.790 | \$12.771 |
|             | 4250 TEU | \$12.947 | \$13.997 |

| Legend |             |                   |
|--------|-------------|-------------------|
| ↑      | up          | + 2% or more      |
| ↗      | steady up   | from +1% to +1,9% |
| →      | steady      | +/- 1 %           |
| ↘      | steady down | from -1% to -1,9% |
| ↓      | down        | - 2% or less      |

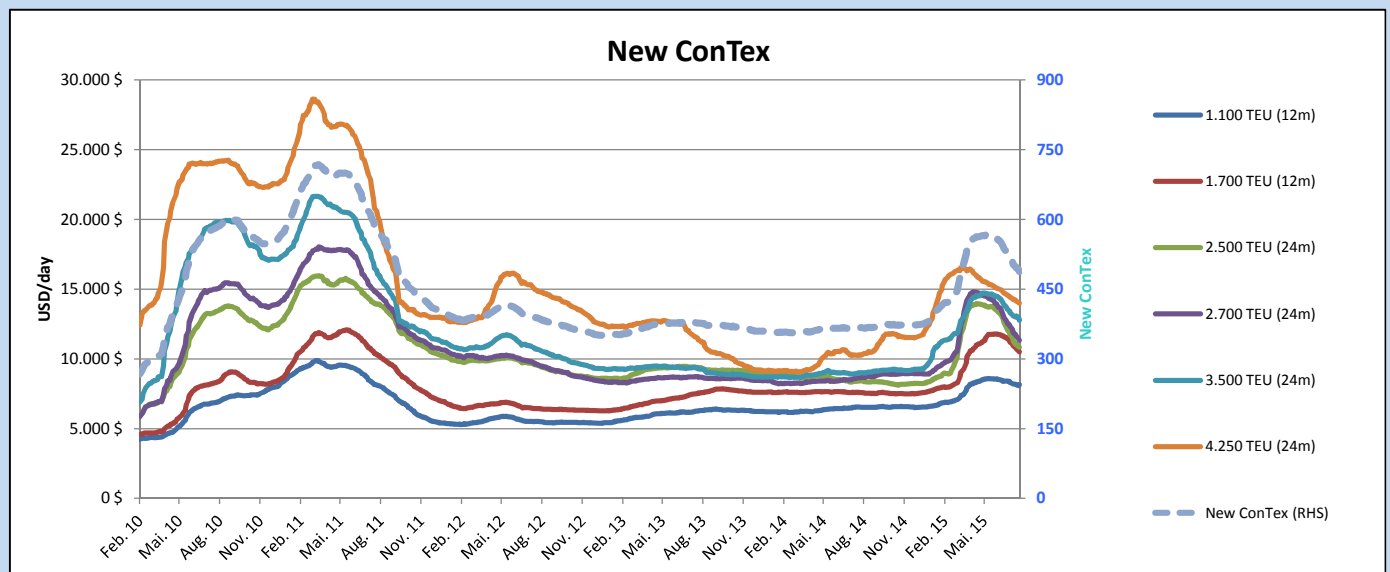
\*New ConTex evaluation is EXCLUDING  
2500/2700/3500/4250 TEU groups for  
12 months period

New ConTex-Commentary - issued:

13.08.15

The main characteristic of the second week of August was limited fixing activity and therefore the negative development of this summer season continues. The New ConTex Index declined this week by 8 points (-1,6%) and closed at 488 points, a level we last saw in March 2015. While on a long-term trend there is still hope for a good finish of this year, the index gains of spring slowly but steadily fades away in all segments. Apart from the 12 months 1100 TEU evaluation which remained stable this week, nearly all other segments continued their downward trend. Within this week the biggest decrease has been noticed in the 3500 TEU group basis the 12-month evaluation with a loss of -2,8% (-\$344). Compared to other segments the 4250 TEU group proceeds its steady trend, apart from a minor drop of around -1% this week.

|             |                  | New ConTex Development |              |          |         |                |          |          |              |          |        |       |
|-------------|------------------|------------------------|--------------|----------|---------|----------------|----------|----------|--------------|----------|--------|-------|
| Vessel type | Evaluated Period | Today                  | Week-on-Week |          |         | Month-on-Month |          |          | Year-on-Year |          |        |       |
|             |                  | 13.08.15               | 06.08.15     | Change   | Change  | 14.07.15       | Change   | Change   | 12.08.14     | Change   | Change |       |
| New ConTex* |                  | 488                    | 496          | -8       | 📉 -1,6% | 531            | -43      | -8,1%    | 367          | 121      | 33,0%  |       |
| New ConTex  | 1100 TEU         | 12 mos                 | \$8.149      | \$8.141  | \$8     | 📈 0,1%         | \$8.402  | -\$253   | -3,0%        | \$6.540  | 1.609  | 24,6% |
|             | 1700 TEU         |                        | \$10.495     | \$10.718 | -\$223  | 📉 -2,1%        | \$11.528 | -\$1.033 | -9,0%        | \$7.611  | 2.884  | 37,9% |
|             | 2500 TEU         | 24 mos                 | \$10.851     | \$11.027 | -\$176  | 📉 -1,6%        | \$12.292 | -\$1.441 | -11,7%       | \$8.408  | 2.443  | 29,1% |
|             | 2700 TEU         |                        | \$11.326     | \$11.614 | -\$288  | 📉 -2,5%        | \$12.739 | -\$1.413 | -11,1%       | \$8.630  | 2.696  | 31,2% |
|             | 3500 TEU         |                        | \$12.771     | \$13.065 | -\$294  | 📉 -2,3%        | \$13.707 | -\$936   | -6,8%        | \$8.980  | 3.791  | 42,2% |
|             | 4250 TEU         |                        | \$13.997     | \$14.133 | -\$136  | 📉 -1,0%        | \$14.633 | -\$636   | -4,3%        | \$10.255 | 3.742  | 36,5% |
|             | 2500 TEU         | 12 mos                 | \$9.671      | \$9.800  | -\$129  | 📉 -1,3%        | \$10.999 | -\$1.328 | -12,1%       | \$7.272  | 2.399  | 33,0% |
|             | 2700 TEU         |                        | \$10.164     | \$10.432 | -\$268  | 📉 -2,6%        | \$11.654 | -\$1.490 | -12,8%       | \$7.656  | 2.508  | 32,8% |
|             | 3500 TEU         |                        | \$11.790     | \$12.134 | -\$344  | 📉 -2,8%        | \$12.664 | -\$874   | -6,9%        | \$7.702  | 4.088  | 53,1% |
|             | 4250 TEU         |                        | \$12.947     | \$13.058 | -\$111  | 📉 -0,9%        | \$13.432 | -\$485   | -3,6%        | \$8.588  | 4.359  | 50,8% |



### Disclaimer

The brand NewConTex is copyrighted by Vereinigung Hamburger Schiffsmakler und Schiffsagenten e.V. ("VHSS e.V.") and is protected by law. The NewConTex may be published only with the source reference © VHSS e.V. It is distributed to the general public for information purposes only and cannot be relied upon as a trading recommendation and does not constitute a solicitation to trade. The reported information is obtained from market sources. While every effort has been made to ensure the accuracy and the completeness of the NewConTex, VHSS e.V. makes no representations, conditions or warranties of any kind, express or implied, about the completeness, accuracy, reliability, or suitability of the NewConTex. Any reliance you place on the NewConTex is therefore strictly at your own risk. Neither VHSS e.V. nor any of its subsidiaries or affiliates nor any employee of the foregoing shall be liable or have any responsibility for any loss, liability or damage, cost or expense including without limitation, indirect or consequential loss or damage, or any loss or damage whatsoever arising from loss of data or profits arising out of, or in connection with, the use of and the reliance on the NewConTex, save for death or personal injury arising from VHSS e.V. negligence and fraudulent misrepresentation that cannot, under German law, be excluded.